

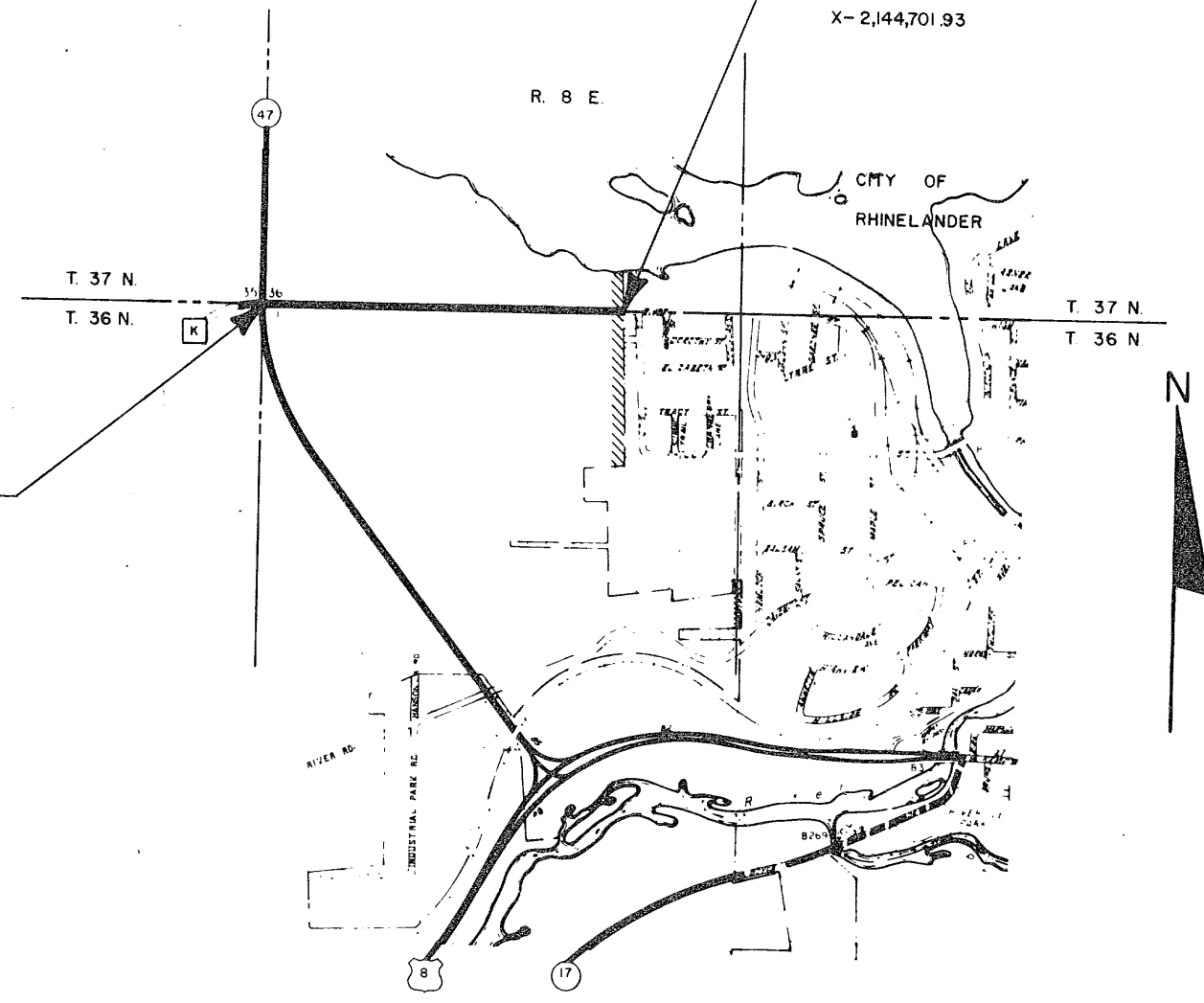
R/W PROJECT NUMBER	9456 - 03 - 00	SHEET NUMBER	4.0	TOTAL SHEETS	4.8
FEDERAL PROJECT NUMBER					
PLAT OF RIGHT OF WAY REQUIRED FOR					
S.T.H. 47 - WEST CITY LIMITS, RHINELANDER					
C.T.H. "K"					
ONEIDA COUNTY, WI					
CONSTRUCTION PROJECT NUMBER 9456-3-70/4					

Conventional Signs and Abbreviations

--- SECTION LINE	AC	ACRES	N	NORTH
--- QUARTER LINE	ETUX	AND WIFE	PC	POINT OF CURVATURE
--- TOWNSHIP AND RANGE LINE	Δ	CENTRAL ANGLE	PI	POINT OF INTERSECTION
--- PROPOSED OR NEW CENTERLINE	COR	CORNER	PT	POINT OF TANGENCY
--- PROPOSED OR NEW R/W LINE	CTH	COUNTY TRUNK HIGHWAY	R	RADIUS
--- EXISTING R/W LINE	D	DEGREE OF CURVE	R/W	RIGHT OF WAY
PL --- PROPERTY LINE	E	EAST	SEC	SECTION
--- SLOPE INTERCEPTS	L	LENGTH OF CURVE	S	SOUTH
--- LIMITED HIGHWAY EASEMENT	LHE	LIMITED HIGHWAY EASEMENT	STA	STATION
○ R/W POINT	LC	LONG CHORD	T	TOWNSHIP
--- FENCE	LCB	LONG CHORD BEARING	T	TANGENT LENGTH OF CURVE
□ SECTION OR QUARTER CORNER	MI	MILE	W	WEST
● POWER POLE	R	RANGE	AP	ACCESS POINT
--- CORPORATE LIMITS	ACC.	ACCESS	S.F.	SQUARE FEET
⊗ TELEPHONE PEDESTAL				
--- UNDERGROUND TELEPHONE CABLE				

END RELOCATION ORDER
 14.22' N. OF AND 3999.93' E. OF THE N.W. COR. OF
 SEC. 1, T. 36 N., R. 8 E.
 Y- 174,542.22
 X- 2,144,701.93

BEGIN RELOCATION ORDER
 N.W. CORNER OF
 SEC. 1, T. 36 N., R. 8 E.
 Y- 174,528.00
 X- 2,140,702.00



NOTES
 COORDINATES AND BEARINGS ON THIS PLAT ARE ORIENTED TO THE WISCONSIN COORDINATE SYSTEM NORTHERN ZONE. ALL PLAT DISTANCES ARE GROUND LENGTH AND MAY BE CONVERTED TO GRID LENGTH BY MULTIPLYING THE DISTANCE BY THE GRID FACTOR PROVIDED ON THE DETAIL SHEETS.
 RIGHT OF WAY MONUMENTS ARE TYPE 3 AND ARE PLACED PRIOR TO OR AT THE TIME OF LAND TITLE TRANSFER.
 RIGHT OF WAY BOUNDARIES ARE DEFINED WITH COURSES OF THE PERIMETER OF THE HIGHWAY LANDS REFERENCED TO THE U.S. PUBLIC LAND SURVEY OR OTHER SURVEYS OF PUBLIC RECORD.

Layout
 0 0.2 0.4 MI.
 TOTAL NET CENTERLINE LENGTH = 0.758 MI.

APPROVED BY ONEIDA COUNTY

12/18/87 Robert H. Maass

ORIGINAL PLAT PREPARED BY

Donohue
 Engineers & Architects

WISCONSIN LAND SURVEYOR
 HOWARD P. MUEHL
 5-1148
 PLOVER, WIS.
 12/8/87

1/15/88	STATE OF WISCONSIN DEPARTMENT OF TRANSPORTATION
2/8/88	Approved: _____ District Transportation Director
	Approved: _____ Director, Bureau of Real Estate
	U.S. DEPARTMENT OF TRANSPORTATION FEDERAL HIGHWAY ADMINISTRATION REGION 5 WISCONSIN DIVISION
	Approved: _____ District Administrator

SCHEDULE OF LANDS & INTEREST REQUIRED

AREAS SHOWN IN THE TOTAL ACRES COLUMN MAY BE APPROXIMATE AND ARE DERIVED FROM TAX ROLLS OR OTHER AVAILABLE SOURCES AND MAY NOT INCLUDE LANDS OF THE OWNER WHICH ARE NOT CONTIGUOUS TO THE AREA TO BE ACQUIRED.

REVISION DATE
1/15/88
2/8/88

ROUTE C.T.H. "K" COUNTY ONIEDA DATE 12/8/87
SCALE, FT. NONE GRID FACTOR

R/W PROJECT NUMBER 9456-03-00 SHEET NUMBER 4.1
FEDERAL PROJECT NUMBER 9456-3-70 4.1

SCHEDULE OF LANDS AND INTERESTS REQUIRED

PARCEL NUMBER	SHEET NUMBER	OWNER(S)	INTEREST REQUIRED	TOTAL ACRES OR S.F.	R/W ACRES REQUIRED OR S.F.			TOTAL ACRES REM.	L.H.E. ACRES TEMP.
					NEW	EXISTING	TOTAL		
1	4.2, 4.4	NORTH COUNTRY INVESTMENT CORP.	L.H.E.	32.5 AC	---	4.3 AC	4.3 AC	28.2 AC	1037 SF
3	4.4	JOHN R. MANGERSON & JEAN MANGERSON	L.H.E.	3.2 AC	---	0.1 AC	0.1 AC	3.1 AC	214 SF
4	4.4	JEROME RHEINGANS, SYLVIA RHEINGANS, ROBERT D. THOSTENSON, PATRICA THOSTENSON	L.H.E.	1.1 AC	---	0.1 AC	0.1 AC	1.0 AC	1051 SF
5	4.4	GEORGE R. ANGELL & BETTY ANGELL	L.H.E.	1.0 AC	---	0.2 AC	0.2 AC	0.8 AC	3837 SF
6	4.4, 4.5	JOHN E. SHILLEMANN	L.H.E.	2.0 AC	---	0.1 AC	0.1 AC	1.9 AC	765 SF
7	4.5, 4.6	DAVID C. HINTZ	FEE	2.7 AC	3279 SF	0.4 AC	0.5 AC	2.2 AC	---
8	4.5	WILLIAM REGIS & PEGGY REGIS	L.H.E.	1.0 AC	---	0.1 AC	0.1 AC	0.9 AC	175 SF
9	4.5	LARRY L. LANG & LINNEA J. LANG	L.H.E.	1.0 AC	---	0.2 AC	0.2 AC	0.8 AC	509 SF
10	4.5, 4.6	HERBERT W. FREUND & ELAINE L. FREUND	FEE & L.H.E.	2.9 AC	3903 SF	0.4 AC	0.5 AC	2.4 AC	2107 SF
11	4.6, 4.7	NORMAN J. BERGMAN & ESTER M. BERGMAN	FEE	7.0 AC	6721 SF	0.6 AC	0.8 AC	6.2 AC	---
12	4.6, 4.7	GARNOLD C. CLINE & MYRTLE CLINE	FEE & L.H.E.	11.0 AC	3080 SF	0.4 AC	0.5 AC	10.5 AC	928 SF
13	4.7, 4.8	ROBERT L. REIDINGER & ROGENE REIDINGER	FEE & L.H.E.	26.4 AC	4577 SF	0.3 AC	0.4 AC	26.0 AC	958 SF
14	4.7	MITCHELL BERGMAN	FEE & L.H.E.	2.0 AC	1813 SF	0.1 AC	0.1 AC	1.9 AC	327 SF
15	4.7, 4.8	MARY FOX	FEE & L.H.E.	8.7 AC	3885 SF	0.5 AC	0.6 AC	8.1 AC	300 SF
18	4.2	DONALD OLCIKAS & MARY OLCIKAS	L.H.E.	2.4 AC	---	1.0 AC	1.0 AC	1.4 AC	700 SF
19	4.3	BEECHER J. SKINNER & BARBARA SKINNER	L.H.E.	3.5 AC	---	0.1 AC	0.1 AC	3.4 AC	1396 SF
20	4.3	HENRY DERVETSKI, JR. & PAMELA DERVETSKI	L.H.E.	4.0 AC	---	0.1 AC	0.1 AC	3.9 AC	1221 SF
21	4.4	SIGWARD WATTEN	L.H.E.	2.5 AC	---	0.1 AC	0.1 AC	2.4 AC	795 SF
22	4.4	JOHN C. MOULTON & LOIS W. MOULTON	L.H.E.	1.6 AC	---	0.1 AC	0.1 AC	1.5 AC	294 SF
23	4.4, 4.5	BUDDY MARTIN	L.H.E.	2.3 AC	---	0.1 AC	0.1 AC	2.2 AC	196 SF

A3901

1
2
3
4
5
6
7
8
9
10
11
12
13
14
15
16
17
18
19
20
21
22
23
24
25
26
27
28
29
30
31
32
33
34
35
36
37
38
39
40
41
42
43
44
45
46
47
48
49
50
51
52
53
54
55
56
57
58
59
60
61
62
63
64
65
66
67
68
69
70
71
72
73
74
75
76
77
78
79
80
81
82
83
84
85
86
87
88
89
90
91
92
93
94
95
96
97
98
99
100

BEARING ORIENTATION AND GRID CONVERSION
 COORDINATES AND RIGHT OF WAY PLAT BEARINGS ARE ORIENTED TO THE WISCONSIN COORDINATE SYSTEM WITH 0 DEGREES, 0 MINUTES, 0 SECONDS BEING GRID NORTH. THE DIFFERENCE BETWEEN PROJECT PLAT BEARINGS REPRESENT PLANE ANGLES IN DEGREES, MINUTES AND SECONDS TO THE NEAREST SECOND. R/W PLAT DISTANCES ARE GROUND LENGTHS UNLESS OTHERWISE NOTED AND MAY BE CONVERTED TO GRID LENGTHS BY MULTIPLYING PLAT DISTANCES BY .9999116

REVISION DATE	R/W PROJECT NUMBER	SHEET NUMBER
1/15/88 2/8/88	9456 - 03 - 00	42
FEDERAL PROJECT NUMBER		
PLAT OF RIGHT OF WAY REQUIRED FOR		
STH. 47-WEST CITY LIMITS, RHINELANDER C.T.H. "K" ONEIDA COUNTY, WI		
SCALE	DATE	
0 10 20 40 FT.	12/8/87	
CONSTRUCTION PROJECT NUMBER 9456-3-70/4.2		

ONEIDA TOWN OF NEWBOLD COUNTY

BEGIN RELOCATION ORDER
 STA. 10+00
 Y- 174,528.00
 X- 2,140,702.00

DONALD OLCIKAS
 MARY OLCIKAS

HELEN M. LEMMENS

ALFRED C. ROLAIN

STOP SIGN

L.H.E. (TEMP) SLOPES

GUARD POST

GAS FILL TUBE

GAS VENTS (2)

GAS PUMP

GUARD POST

PARKING BUMP

CTH. "K"

N 90° 00' 00" E

SLOPE INTERCEPT

WOODS

C.E. BIT. PARK. LOT

WALK PLANTING AREA

NEW HORI BLDG. SIGN

PLANTER

NORTH COUNTRY INVESTMENT CORP.

ONEIDA TOWN OF CRESCENT

GUY WIRES (2)
 GUY POLE

HY SIGN

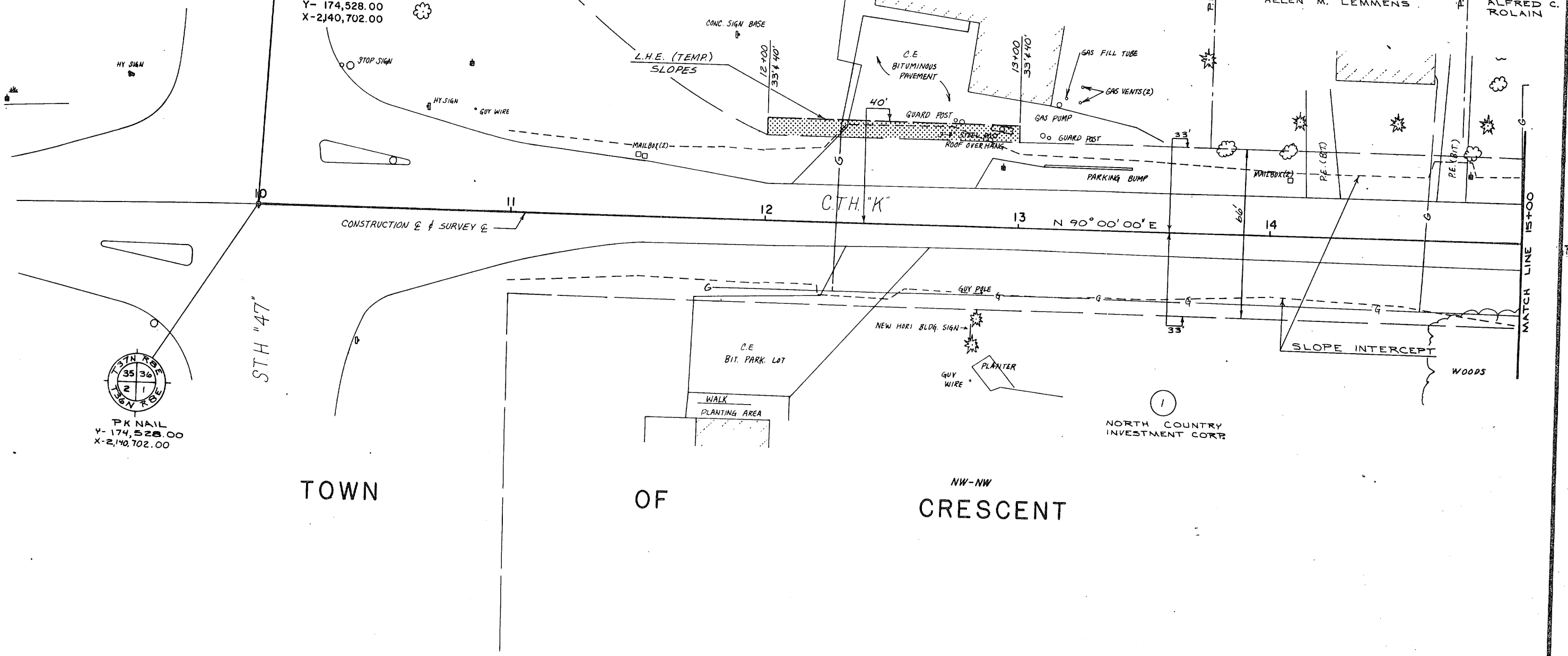
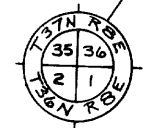
HY SIGN
 GUY WIRE

MAILBOX (2)

STH "47"

PK NAIL
 Y- 174,528.00
 X- 2,140,702.00

MATCH LINE 15+00

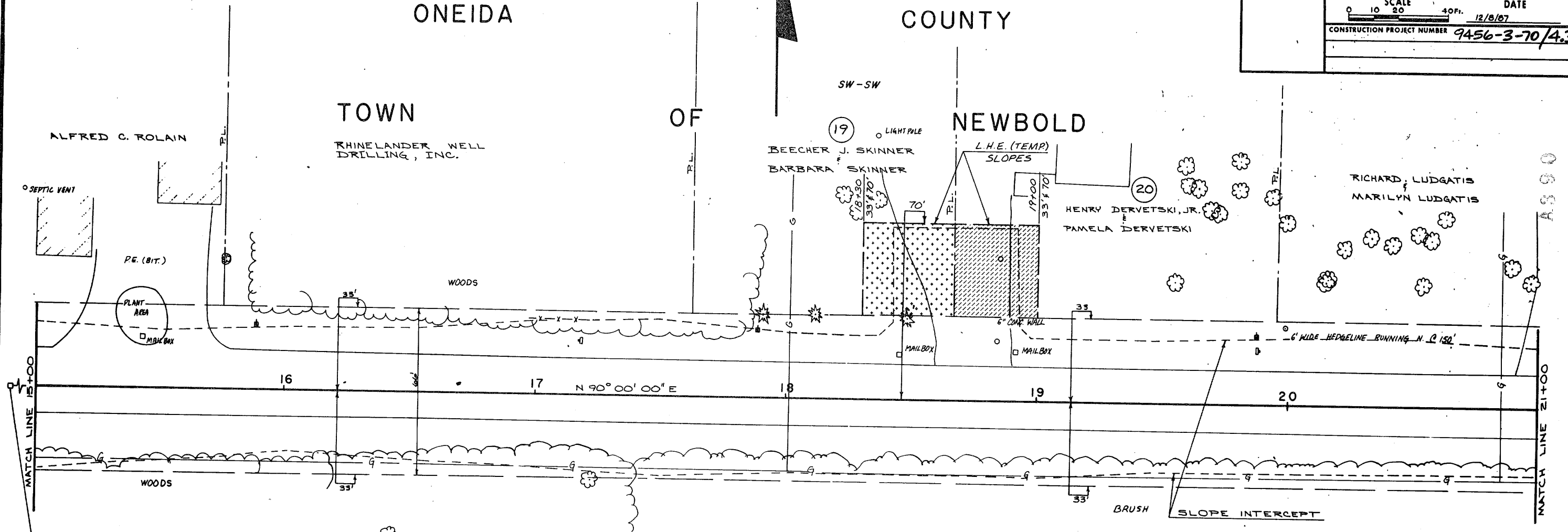


BEARING ORIENTATION AND GRID CONVERSION
 COORDINATES AND RIGHT OF WAY PLAT BEARINGS ARE ORIENTED TO THE WISCONSIN COORDINATE SYSTEM WITH 0 DEGREES, 0 MINUTES, 0 SECONDS BEING GRID NORTH. THE DIFFERENCE BETWEEN PROJECT PLAT BEARINGS REPRESENT PLANE ANGLES IN DEGREES, MINUTES AND SECONDS TO THE NEAREST SECOND. R/W PLAT DISTANCES ARE GROUND LENGTHS UNLESS OTHERWISE NOTED AND MAY BE CONVERTED TO GRID LENGTHS BY MULTIPLYING PLAT DISTANCES BY .999916

REVISION DATE	R/W PROJECT NUMBER	SHEET NUMBER
1/15/88 2/8/88	9456 - 03 - 00	4.3
FEDERAL PROJECT NUMBER		
PLAT OF RIGHT OF WAY REQUIRED FOR S.T.H. 47- WEST CITY LIMITS, RHINELANDER C.T.H. "K" ONEIDA COUNTY, WI		
SCALE 0 10 20 40 FT.		DATE 12/8/87
CONSTRUCTION PROJECT NUMBER 9456-3-70/4.3		

ONEIDA COUNTY

TOWN OF NEWBOLD



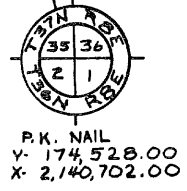
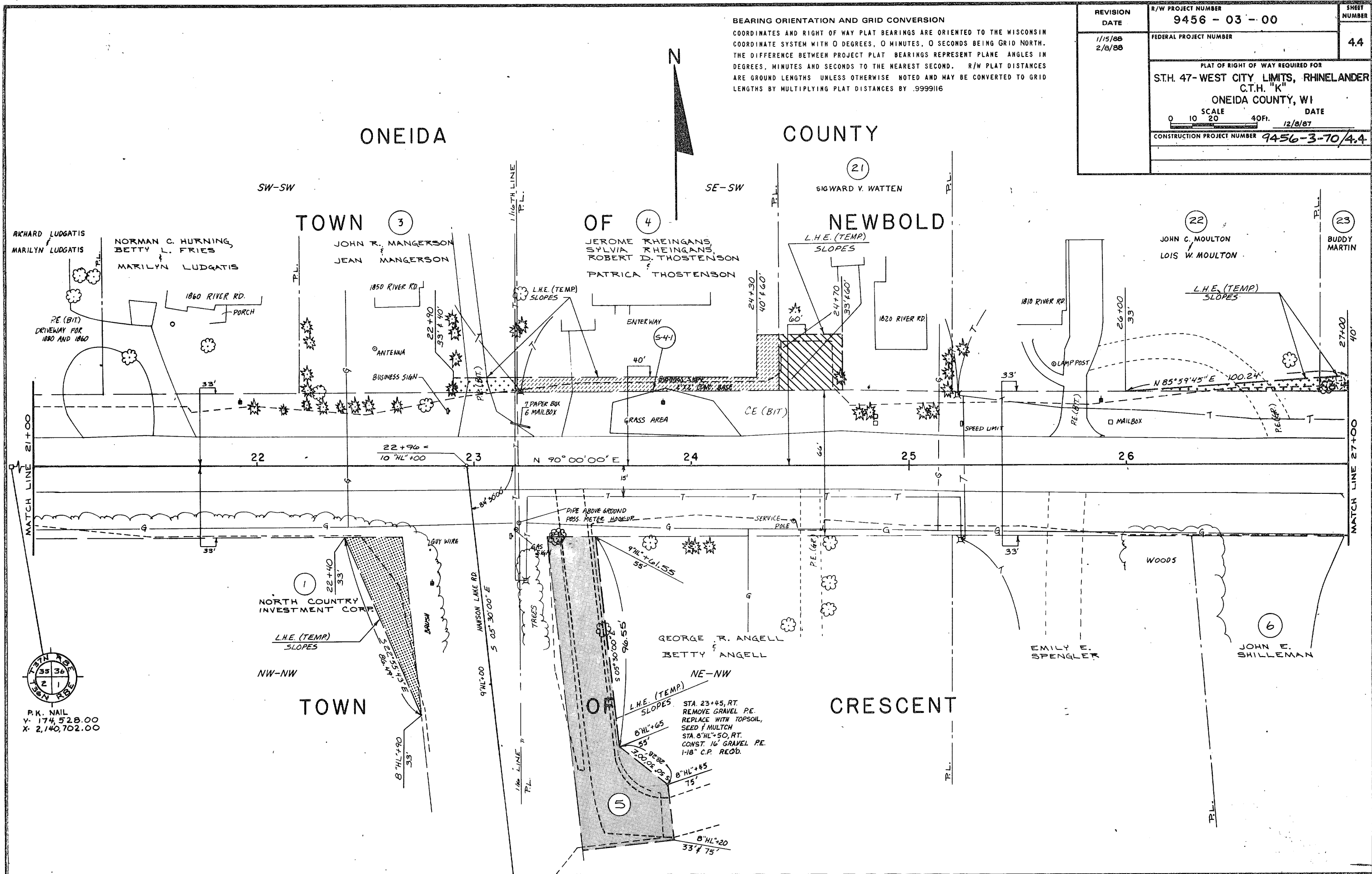
TOWN OF CRESCENT

1
NORTH COUNTRY INVESTMENT CORP

NW-NW

BEARING ORIENTATION AND GRID CONVERSION
 COORDINATES AND RIGHT OF WAY PLAT BEARINGS ARE ORIENTED TO THE WISCONSIN
 COORDINATE SYSTEM WITH 0 DEGREES, 0 MINUTES, 0 SECONDS BEING GRID NORTH.
 THE DIFFERENCE BETWEEN PROJECT PLAT BEARINGS REPRESENT PLANE ANGLES IN
 DEGREES, MINUTES AND SECONDS TO THE NEAREST SECOND. R/W PLAT DISTANCES
 ARE GROUND LENGTHS UNLESS OTHERWISE NOTED AND MAY BE CONVERTED TO GRID
 LENGTHS BY MULTIPLYING PLAT DISTANCES BY .9999116

REVISION DATE	R/W PROJECT NUMBER 9456 - 03 - 00	SHEET NUMBER
1/15/88 2/8/88	FEDERAL PROJECT NUMBER	4.4
PLAT OF RIGHT OF WAY REQUIRED FOR S.T.H. 47- WEST CITY LIMITS, RHINELANDER C.T.H. "K" ONEIDA COUNTY, WI		
SCALE 0 10 20 40ft.		DATE 12/8/87
CONSTRUCTION PROJECT NUMBER 9456-3-70/4.4		



NE-NW
 L.H.E. (TEMP)
 SLOPES
 STA. 23+45, RT.
 REMOVE GRAVEL P.E.
 REPLACE WITH TOPSOIL,
 SEED & MULCH
 STA. 8" HL + 50, RT.
 CONST. 16" GRAVEL P.E.
 1-18" C.P. RECD.

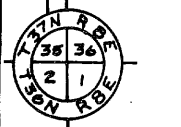
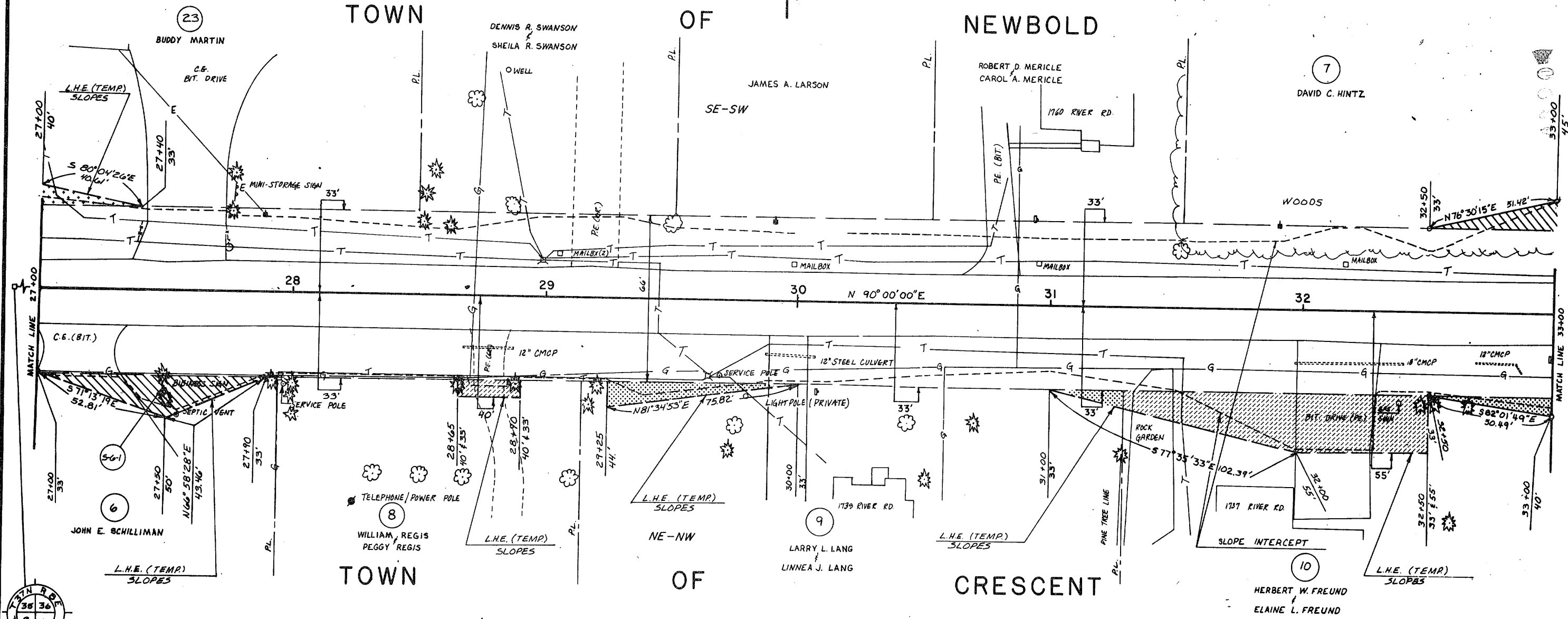
BEARING ORIENTATION AND GRID CONVERSION
 COORDINATES AND RIGHT OF WAY PLAT BEARINGS ARE ORIENTED TO THE WISCONSIN
 COORDINATE SYSTEM WITH 0 DEGREES, 0 MINUTES, 0 SECONDS BEING GRID NORTH.
 THE DIFFERENCE BETWEEN PROJECT PLAT BEARINGS REPRESENT PLANE ANGLES IN
 DEGREES, MINUTES AND SECONDS TO THE NEAREST SECOND. R/W PLAT DISTANCES
 ARE GROUND LENGTHS UNLESS OTHERWISE NOTED AND MAY BE CONVERTED TO GRID
 LENGTHS BY MULTIPLYING PLAT DISTANCES BY .9999116

REVISION DATE	R/W PROJECT NUMBER	SHEET NUMBER
1/15/88 2/8/88	9456 - 03 - 00	4.5
FEDERAL PROJECT NUMBER		
PLAT OF RIGHT OF WAY REQUIRED FOR S.T.H. 47- WEST CITY LIMITS, RHINELANDER C.T.H. "K" ONEIDA COUNTY, WI		
SCALE	DATE	
0 10 20 40 Ft.	12/8/87	
CONSTRUCTION PROJECT NUMBER 9456-3-70/4.5		

ONEIDA COUNTY



TOWN OF NEWBOLD



PK. NAIL
 Y-174,528.00
 X-2,140,702.00

BEARING ORIENTATION AND GRID CONVERSION
 COORDINATES AND RIGHT OF WAY PLAT BEARINGS ARE ORIENTED TO THE WISCONSIN
 COORDINATE SYSTEM WITH 0 DEGREES, 0 MINUTES, 0 SECONDS BEING GRID NORTH.
 THE DIFFERENCE BETWEEN PROJECT PLAT BEARINGS REPRESENT PLANE ANGLES IN
 DEGREES, MINUTES AND SECONDS TO THE NEAREST SECOND. R/W PLAT DISTANCES
 ARE GROUND LENGTHS UNLESS OTHERWISE NOTED AND MAY BE CONVERTED TO GRID
 LENGTHS BY MULTIPLYING PLAT DISTANCES BY .9999116

REVISION DATE	R/W PROJECT NUMBER 9456 - 03 - 00	SHEET NUMBER
1/15/88 2/8/88	FEDERAL PROJECT NUMBER	4.6
PLAT OF RIGHT OF WAY REQUIRED FOR S.T.H. 47-WEST CITY LIMITS, RHINELANDER C.T.H. "K" ONEIDA COUNTY, WI.		
SCALE 0 10 20 40ft.		DATE 12/8/88
CONSTRUCTION PROJECT NUMBER 9456-3-70/4.6		

ONEIDA

COUNTY

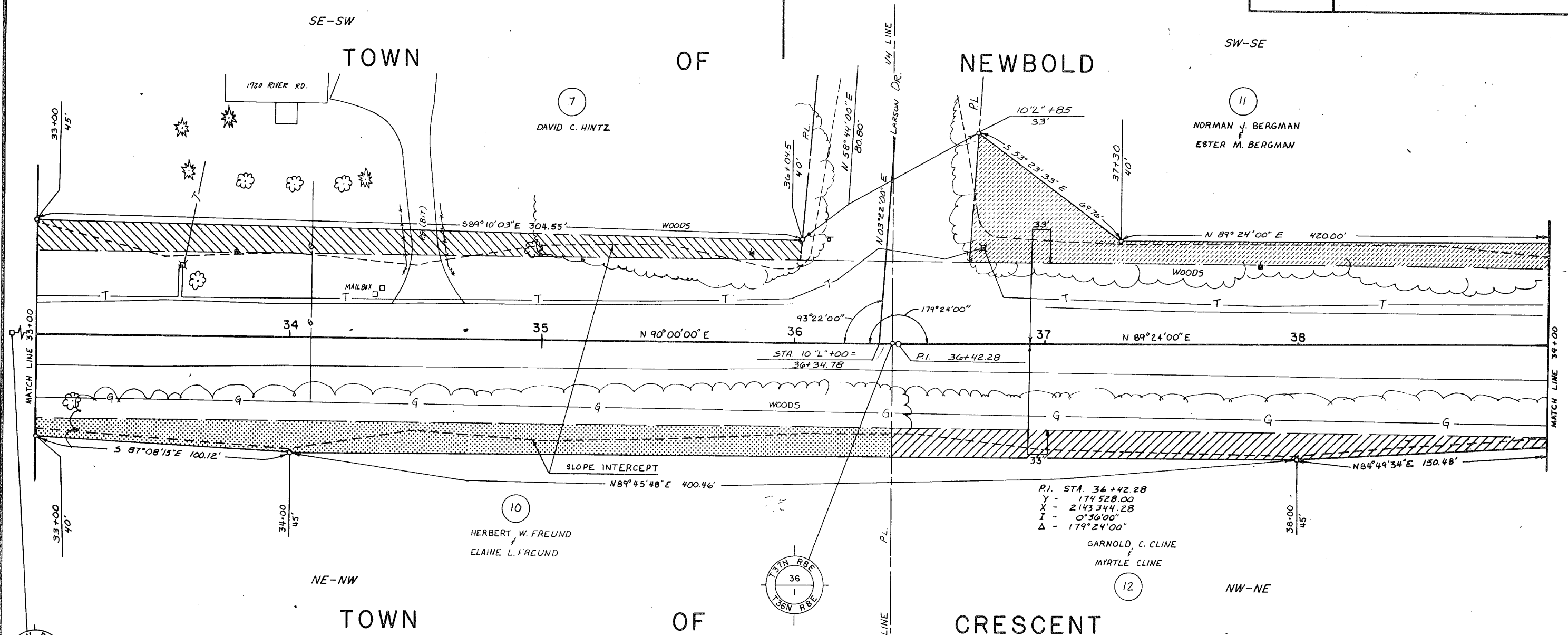
SE-SW

TOWN

OF

NEWBOLD

SW-SE



P.K. NAIL
 Y-174,528.00
 X-2,140,702.00

RAILROAD SPIKE
 Y-174,528.00
 X-2,143,544.28

P.I. STA. 36+42.28
 Y - 174,528.00
 X - 2,143,344.28
 I - 0°36'00"
 Δ - 179°24'00"
 GARNOLD C. CLINE
 MYRTLE CLINE

HERBERT W. FREUND
 ELAINE L. FREUND

NORMAN J. BERGMAN
 ESTER M. BERGMAN

NE-NW

TOWN

OF

CRESCENT

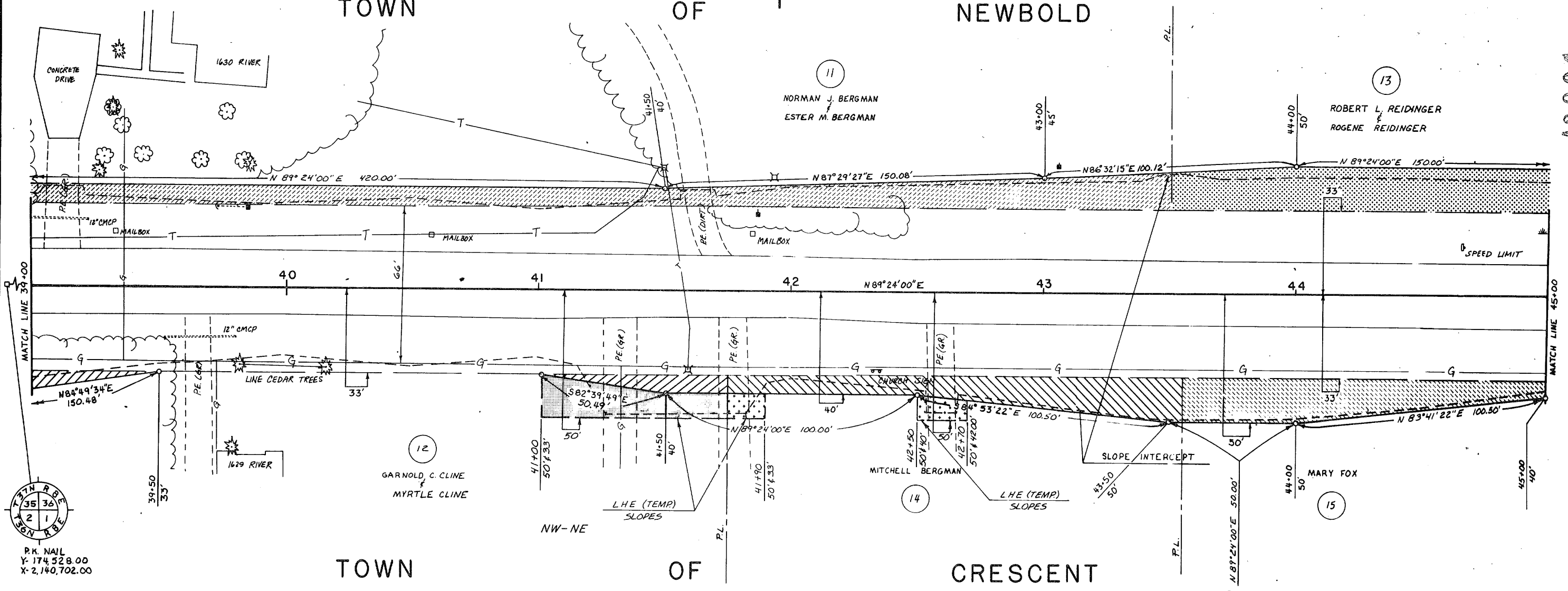
NW-NE

BEARING ORIENTATION AND GRID CONVERSION
 COORDINATES AND RIGHT OF WAY PLAT BEARINGS ARE ORIENTED TO THE WISCONSIN
 COORDINATE SYSTEM WITH 0 DEGREES, 0 MINUTES, 0 SECONDS BEING GRID NORTH.
 THE DIFFERENCE BETWEEN PROJECT PLAT BEARINGS REPRESENT PLANE ANGLES IN
 DEGREES, MINUTES AND SECONDS TO THE NEAREST SECOND. R/W PLAT DISTANCES
 ARE GROUND LENGTHS UNLESS OTHERWISE NOTED AND MAY BE CONVERTED TO GRID
 LENGTHS BY MULTIPLYING PLAT DISTANCES BY .9999116

REVISION DATE	R/W PROJECT NUMBER 9456 - 03 - 00	SHEET NUMBER
1/15/88 2/8/88	FEDERAL PROJECT NUMBER	4.7
PLAT OF RIGHT OF WAY REQUIRED FOR S.T.H. 47-WEST CITY LIMITS, RHINELANDER C.T.H. "K" ONEIDA COUNTY, WI		
SCALE 0 10 20 40 Ft.		DATE 12/8/88
CONSTRUCTION PROJECT NUMBER 9456-3-70/4.7		

ONEIDA COUNTY

TOWN OF NEWBOLD



PK NAIL
 Y-174,528.00
 X-2,140,702.00

BEARING ORIENTATION AND GRID CONVERSION
 COORDINATES AND RIGHT OF WAY PLAT BEARINGS ARE ORIENTED TO THE WISCONSIN COORDINATE SYSTEM WITH 0 DEGREES, 0 MINUTES, 0 SECONDS BEING GRID NORTH. THE DIFFERENCE BETWEEN PROJECT PLAT BEARINGS REPRESENT PLANE ANGLES IN DEGREES, MINUTES AND SECONDS TO THE NEAREST SECOND. R/W PLAT DISTANCES ARE GROUND LENGTHS UNLESS OTHERWISE NOTED AND MAY BE CONVERTED TO GRID LENGTHS BY MULTIPLYING PLAT DISTANCES BY .9999116

REVISION DATE	R/W PROJECT NUMBER	SHEET NUMBER
1/15/88 2/8/88	9456 - 03 - 00	4.8
FEDERAL PROJECT NUMBER		
PLAT OF RIGHT OF WAY REQUIRED FOR S.T.H. 47-WEST CITY LIMITS, RHINELANDER C.T.H. "K" ONEIDA COUNTY, WI		
SCALE 0 10 20 40 Ft.		DATE 12/8/88
CONSTRUCTION PROJECT NUMBER 9456-3-70 / 4.8		

ONEIDA

COUNTY

TOWN

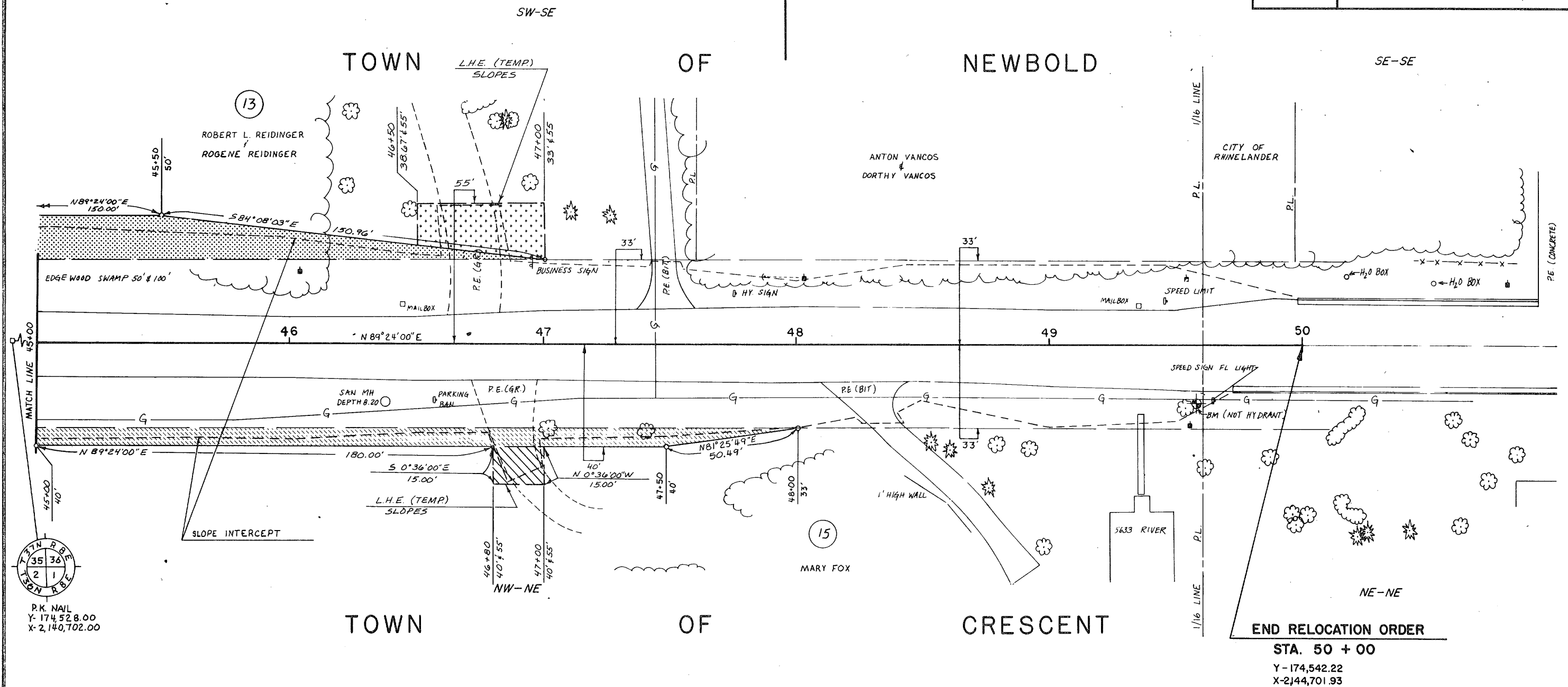
OF

NEWBOLD

TOWN

OF

CRESCENT



END RELOCATION ORDER
 STA. 50 + 00
 Y-174,542.22
 X-2144,701.93

