

W I L L O W

V E R

C H A N N E L

PARCEL 1

PARCEL 2

PARCEL 3

TOWN ROAD

A3954
GUNTHER

A3954

A3954

RECEIVED & FILED #A3954
 Oneida County Surveyor's Office
 Date... AUG. 17. 1988
 By... R.
 OCS Area #.....

S0°-14'E
124.6

N54°-49'E
235.9

S58°-25'W
166.4

N32°-09'W
90.5

S52°-27'W
150.0

S59°-11'W
150.0

N34°-09'W
108.5

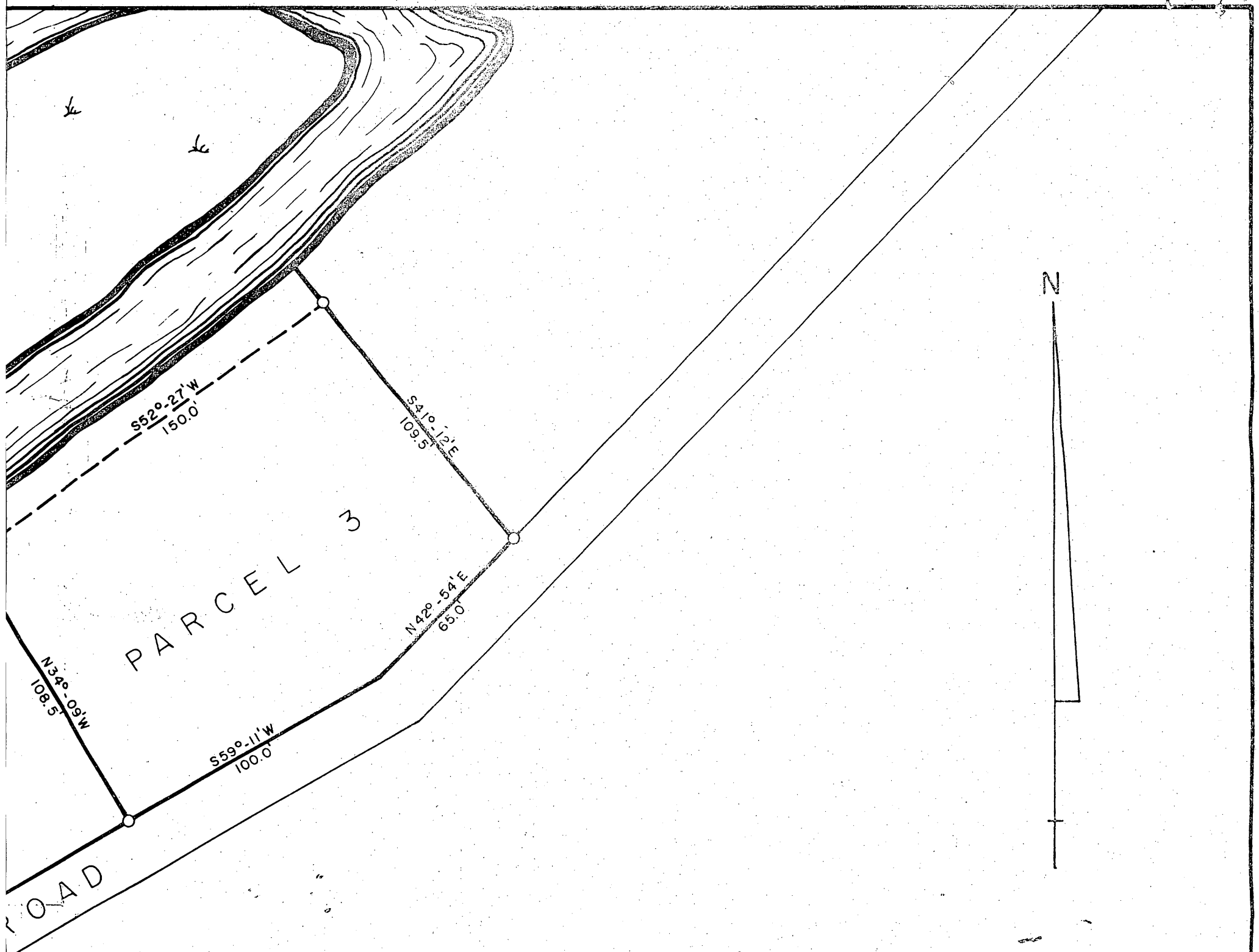
S52°-27'W
150.0

S59°-11'W
100.0

S41°-12'E
109.5

N42°-54'E
65.0

PART OF
 SE 1/4 SE 1/4 - SEC
 T37N
 ONEIDA COUNTY, WI

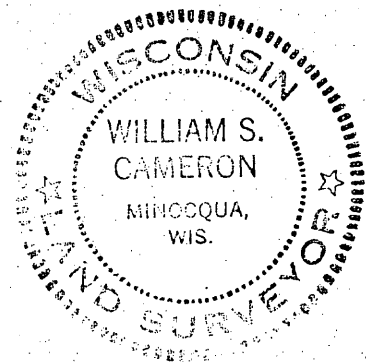


PART OF
 SE 1/4 SE 1/4 - SECTION 9
 T37N R4E
 ONEIDA COUNTY, WIS.

Scale: 1" = 40'

MAY, 1967

William S. Cameron
 WILLIAM S. CAMERON REG. SURVEYOR



DRAFTED BY I. DEAN

W I L L O W
R I V E R

C H A N N E L

PARCEL 2

PARCEL 1

TOWN ROAD

GUNTHER

S00°-14'E

124.6

77.5'

N54°-49'E
235.9

S58°-25'W
166.4

S52°-27'W
150.0

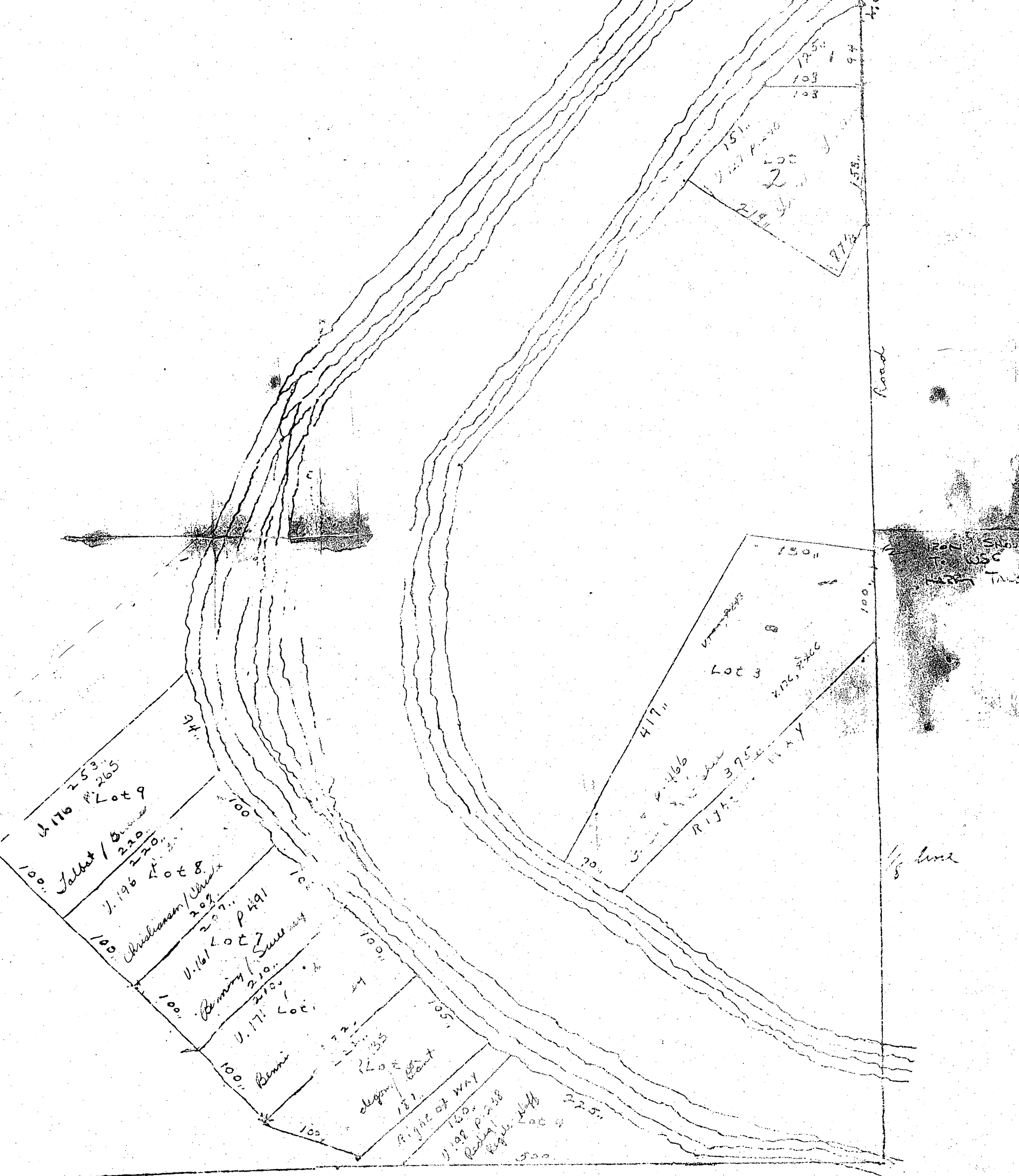
N34°-09'W
108.5

N34°-09'W
69.9

S59°-11'W
150.0

4395

7th & E. 1/4 SECTION 9



A3954



NW Corner SE SE

WILLOW RIVER

WILLOW RIVER

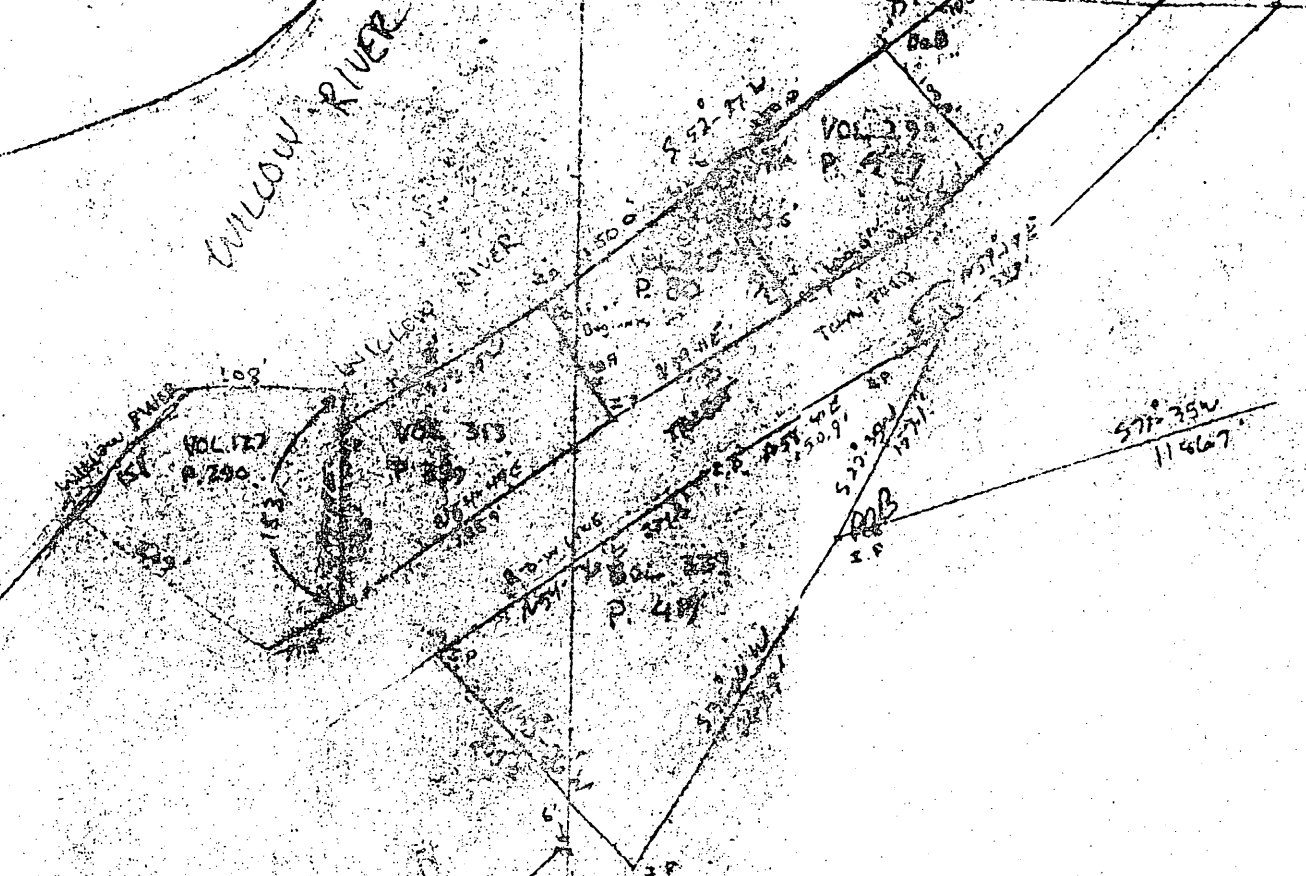
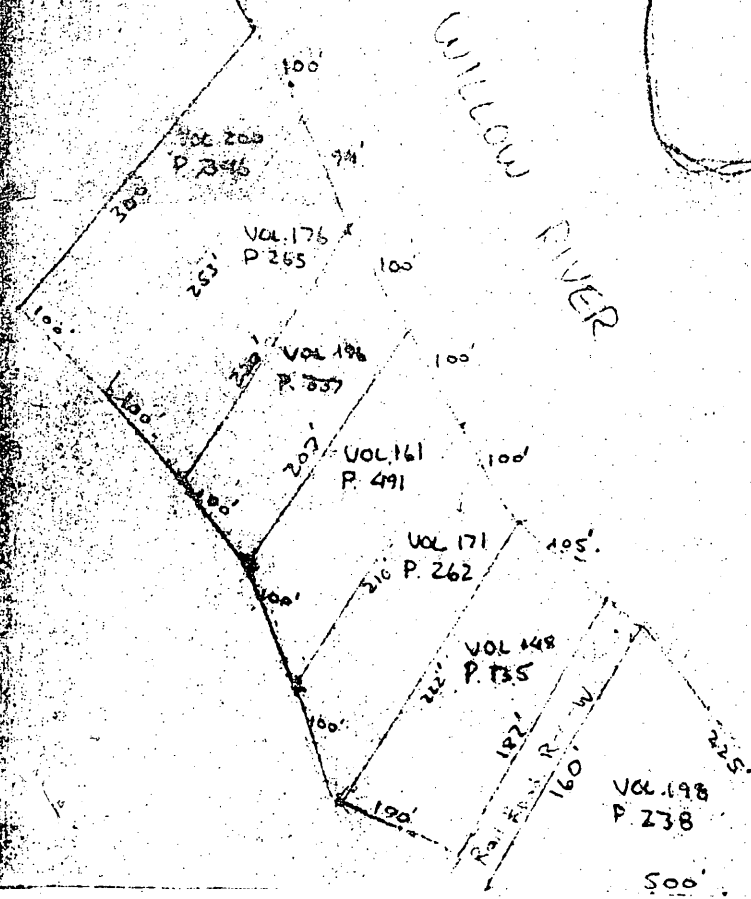
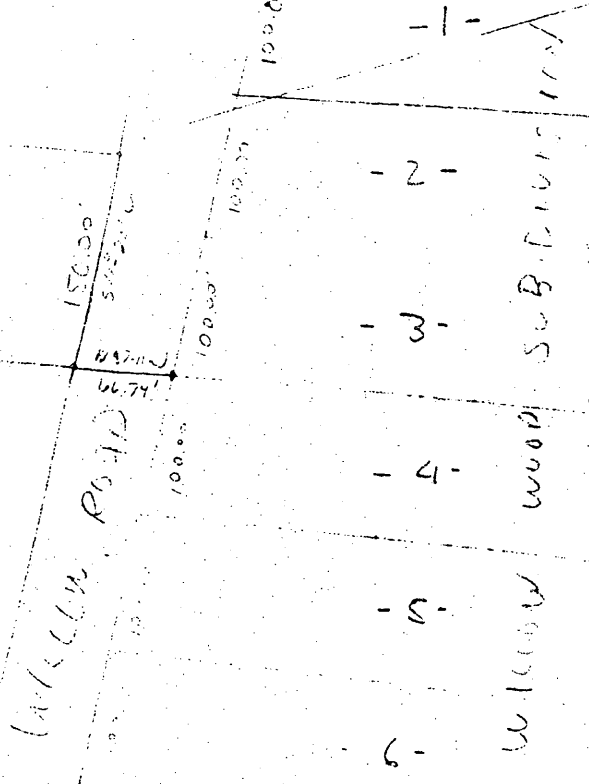
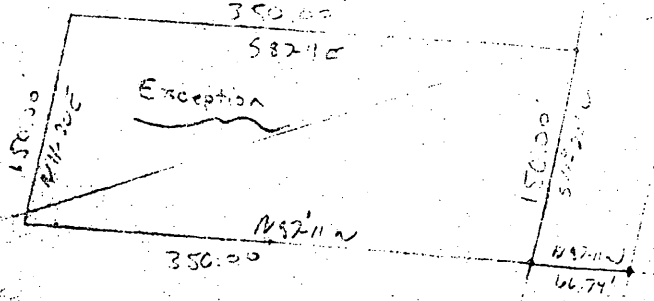
WILLOW RIVER

WILLOW RIVER

Gov. Lot 4

SE 1/4 SE 1/4 Sec 9

Sec 16



577° 35' W
1146.7'

577° 35' W
1146.7'

N 87° 05' W
127.2'

S 42° 11' W
145.5'

857° 11' W
150.0'

857° 11' W
150.0'

857° 11' W
150.0'

857° 11' W
150.0'

857° 11' W
150.0'

857° 11' W
150.0'

857° 11' W
150.0'

857° 11' W
150.0'

857° 11' W
150.0'

857° 11' W
150.0'

857° 11' W
150.0'

857° 11' W
150.0'

857° 11' W
150.0'

857° 11' W
150.0'

857° 11' W
150.0'

857° 11' W
150.0'

857° 11' W
150.0'

857° 11' W
150.0'

857° 11' W
150.0'

857° 11' W
150.0'

857° 11' W
150.0'

857° 11' W
150.0'

857° 11' W
150.0'

100.00'

100.00'

100.00'

100.00'

100.00'

100.00'

100.00'

100.00'

100.00'

100.00'

100.00'

100.00'