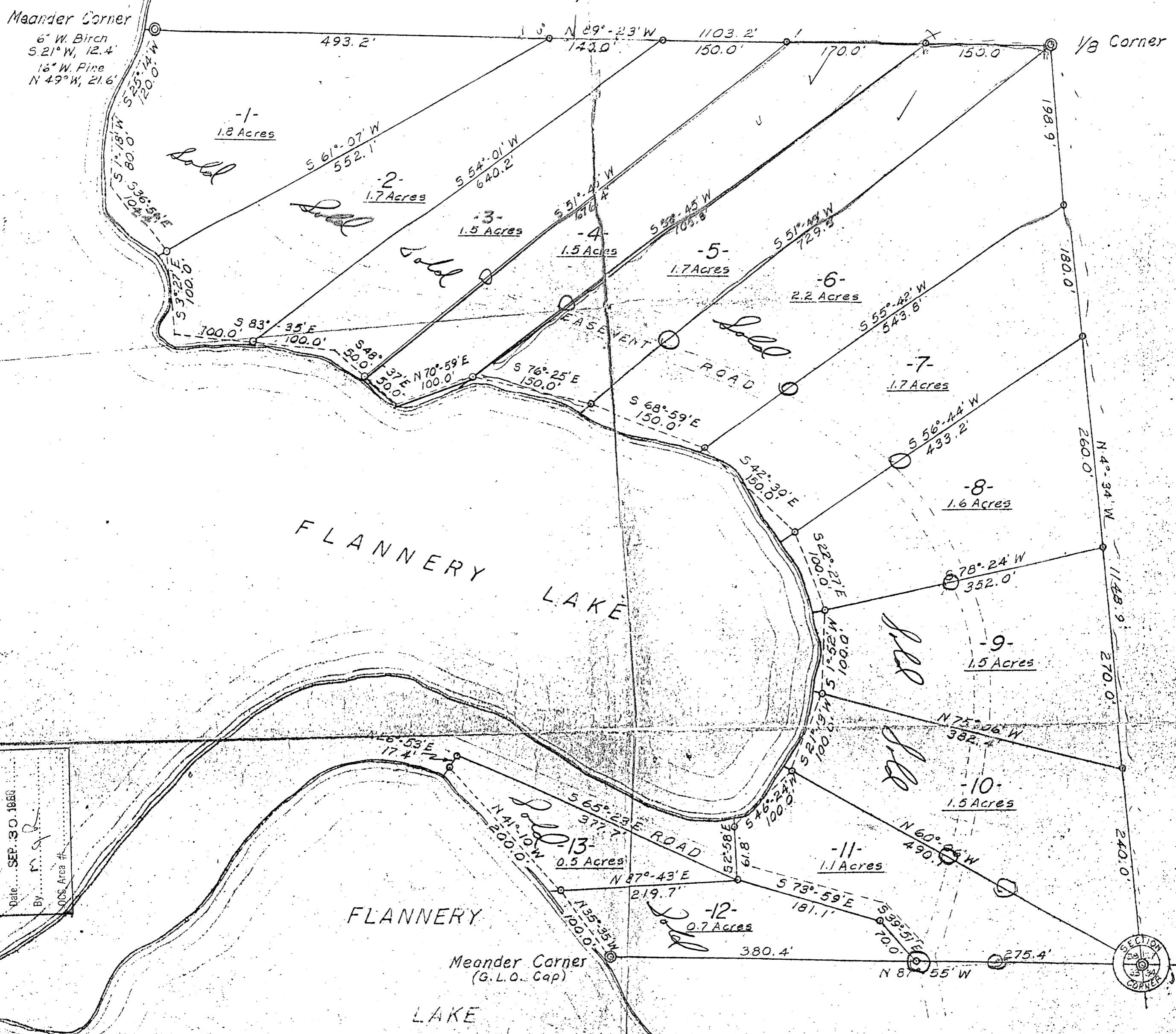
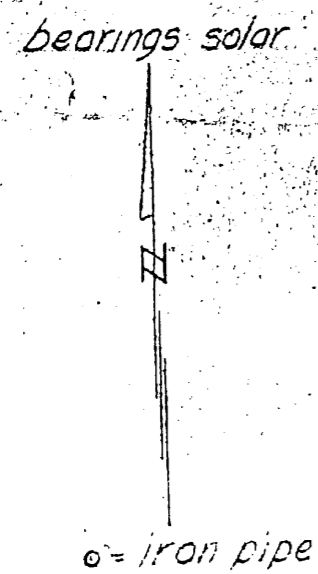


A 268

A 268

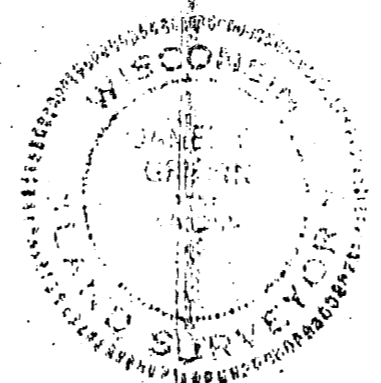


RECEIVED & FILED # **A 392**
 Oneida County Surveyor's Office
 Date... **SEP. 30. 1964**
 By... *M. J. P.*
 OCS Area #



GOV'T. LOT 1
 SECTION 28, T 37N, R 8 E
 Oneida County, Wis.

Scale 1" = 100'
 August, 1964
 Revised October, 1964



Northwoods Surveyors
James J. Smith
 Land Surveyor

A 268

A 268