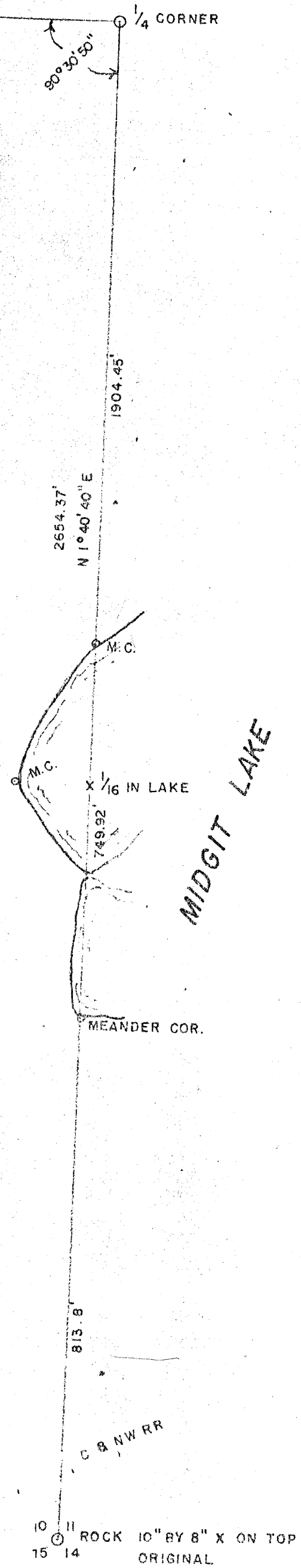


EAR JOHNSON

EC. 10
NEIDA CO.

S MAGNETIC
1" = 200'
MENTS BY OTHERS
9-19-65 N.J.L.



RECEIVED & FILED #... **A 4**
Oneida County Surveyor's Office
Date... **FEB. 10 1988**
By... **M J H**
OCS Area #.....

ods

c. 1/4

N 87° 48' 3" W

2894.62'

SURVEY FOR OSCAR JOHNSON

PART OF ^{SE} SW 1/4 SEC. 10
T. 36 N., R. 9 E. ONEIDA CO.

BEARINGS MAGNETIC
SCALE 1" = 200'

○ MONUMENTS BY OTHERS

9-19-65 N.J.L.

