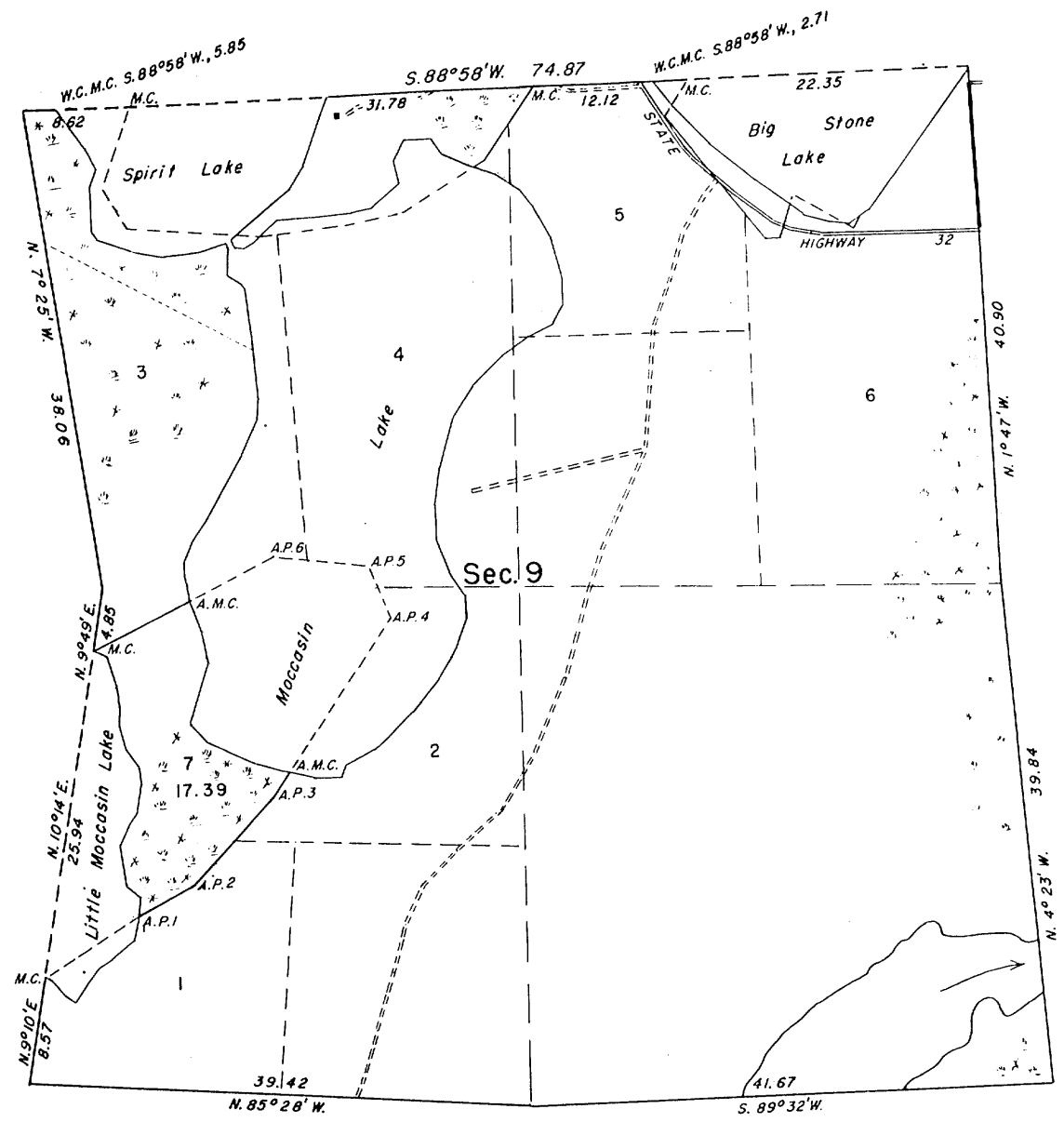


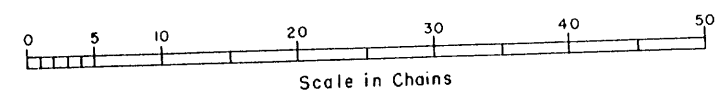
TOWNSHIP 38 NORTH, RANGE II EAST, OF THE FOURTH PRINCIPAL MERIDIAN
 DEPENDENT RESURVEY AND SURVEY

MOCCASIN



This plat represents a retracement and reestablishment of portions of the original subdivisional lines designed to restore all corners on the boundaries of Sec. 9 in their original locations according to the best available evidence, and the survey of omitted lands which were erroneously omitted from the original survey and not shown upon the plat approved December 20, 1859.

The position of the original record-meander courses of Moccasin Lake is shown by an irregular line with numbered angle points. This line, as thus originally reported, was grossly in error and with the exception of certain courses fronting on Lots 1, 2, 3, and 4, has been established as a fixed boundary with the directions and lengths of the several record-meander courses adjusted to the reestablished position of the original survey.

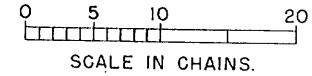
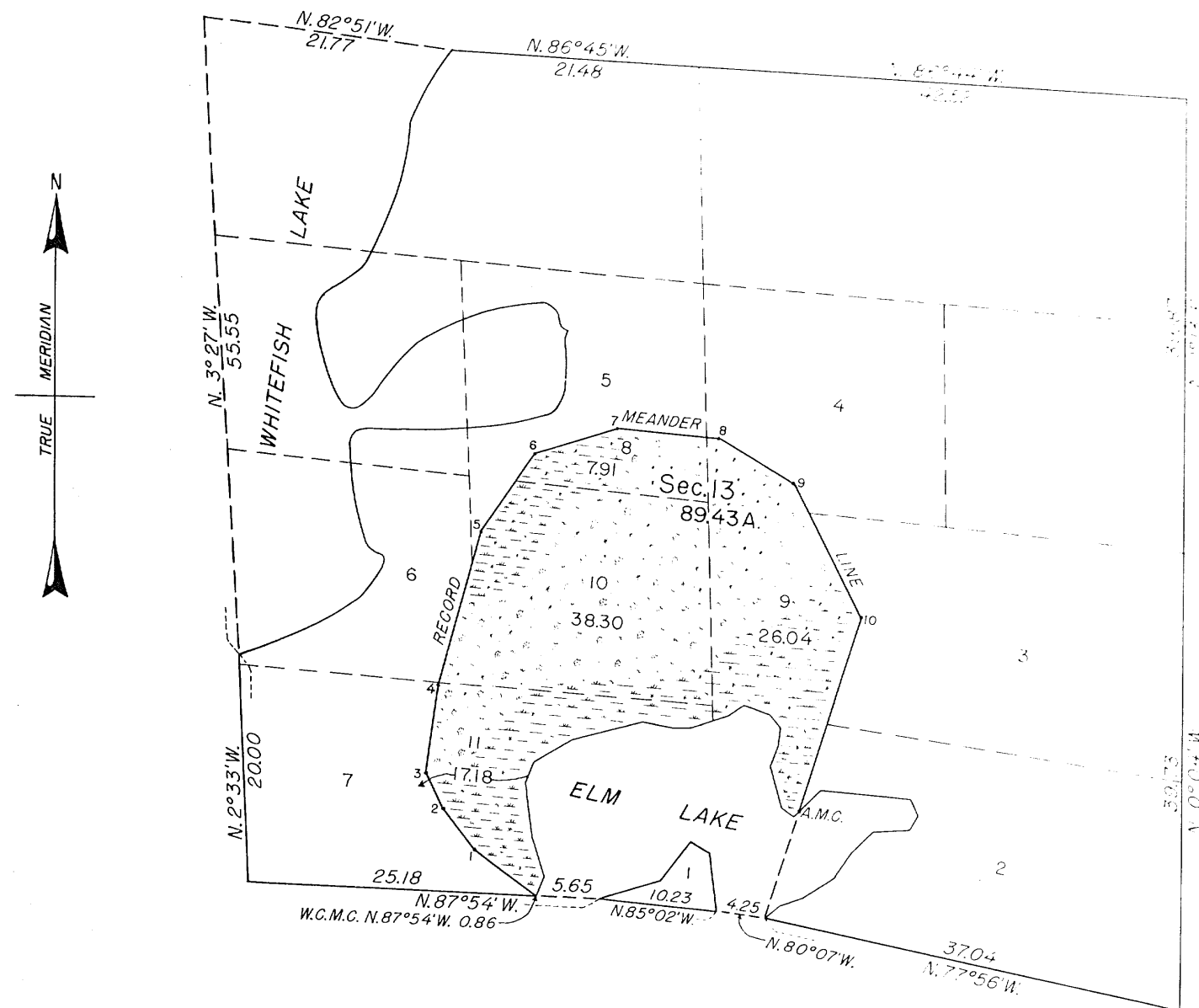


Area Surveyed: 17.39 acres

UNITED STATES DEPARTMENT OF THE INTERIOR
 BUREAU OF LAND MANAGEMENT
 Washington, D. C.

Turn to front side for sec. 13

A 400



AREA SURVEYED, 89.43 ACRES.

LINES DESIGNATED	BY WHOM SURVEYED	GROUP NO.	DATE OF SPECIAL INSTRUCTIONS	WHEN SURVEYED	
				BEGUN	COMPLETED
MEANDER	HAL D. CRAIG	51	MAY 25, 1943.	SEPTEMBER 25, 1943.	SEPTEMBER 29, 1943.

MEMORANDUM.

THIS PLAT REPRESENTS THE SURVEY OF PUBLIC LAND WHICH WAS NOT INCLUDED IN THE ORIGINAL SURVEY OF THE TOWNSHIP AS SHOWN UPON THE PLAT APPROVED DECEMBER 20, 1859. THE RESURVEY OF THE SECTION BOUNDARIES IS REPRESENTED ON THE PLAT APPROVED OCTOBER 1, 1943.

THE POSITION OF THE ORIGINAL RECORD-MEANDER COURSES OF THE LAKE IN SECTION 13 IS SHOWN BY AN IRREGULAR LINE WITH NUMBERED ANGLE POINTS. THIS LINE, AS THUS ORIGINALLY REPORTED, WAS GROSSLY IN ERROR AND HAS THEREFORE BEEN ESTABLISHED AS A FIXED BOUNDARY, WITH THE DIRECTIONS AND LENGTHS OF THE SEVERAL COURSES ADJUSTED TO THE POINTS CALLED FOR ON THE SECTION BOUNDARIES.

THE SURVEY WAS EXECUTED PURSUANT TO AUTHORITY CONTAINED IN GENERAL LAND OFFICE MEMORANDUM 1859603 "E" DATED MAY 21, 1943.

UNITED STATES DEPARTMENT OF THE INTERIOR.
GENERAL LAND OFFICE.

DENVER, COLORADO, JUNE 26, 1945.
THIS PLAT OF SECTION 13, TOWNSHIP NO. 38 NORTH, RANGE NO. 11 EAST, OF THE FOURTH PRINCIPAL MERIDIAN, WISCONSIN, IS STRICTLY CONFORMABLE TO THE FIELD NOTES OF THE SURVEY THEREOF WHICH HAVE BEEN EXAMINED AND APPROVED.

WASHINGTON, D. C., JUNE 26, 1945.
THE SURVEY REPRESENTED BY THIS PLAT, HAVING BEEN CORRECTLY EXECUTED IN ACCORDANCE WITH THE REQUIREMENTS OF LAW AND THE REGULATIONS OF THIS OFFICE, IS HEREBY ACCEPTED.

W. N. R.
SUPERVISOR OF SURVEYS.

ASSISTANT COMMISSIONER.

W.N.R.