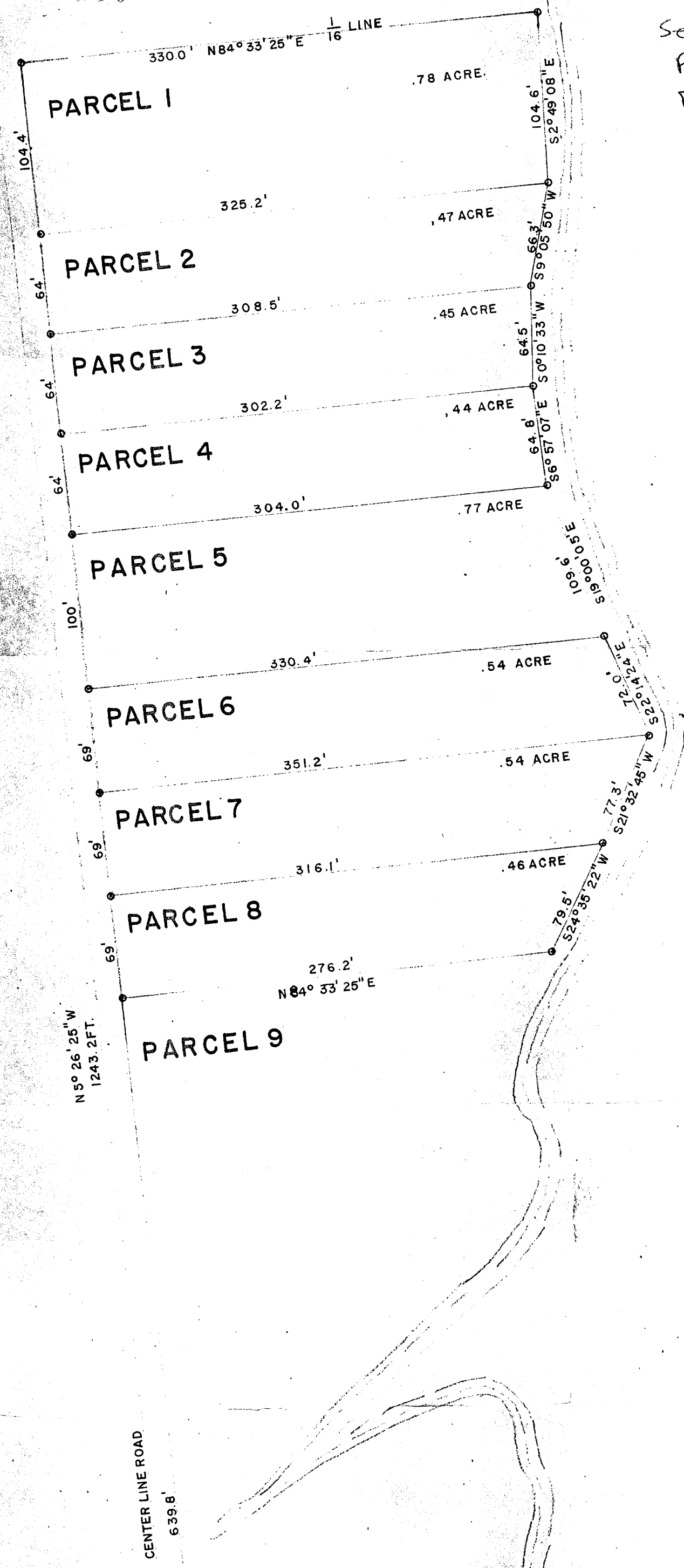


A407

RECEIVED & FILED # **A407**
 Oneida County Surveyor's Office
 Date... **DEC. 31. 1989**.....
ds.m.R
 OCS Area #.....

See V 255
 P 411 Deeds m.R.
 For map.

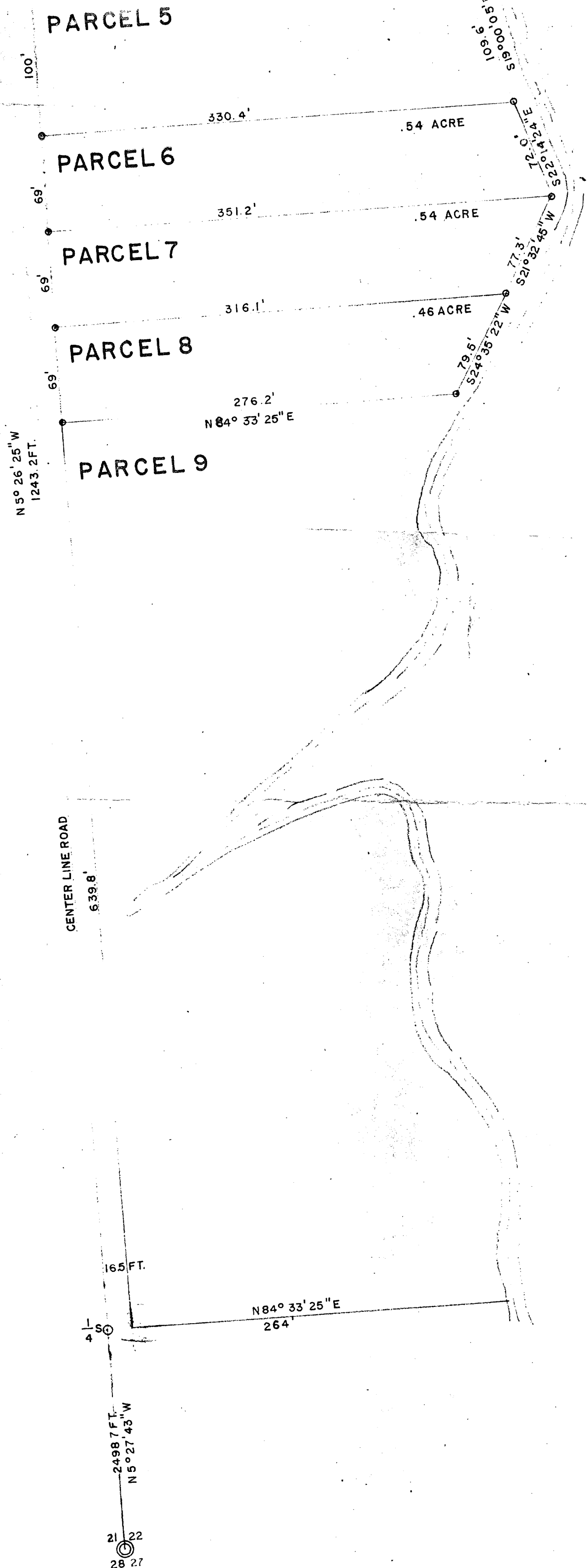


MUD
LAKE

MUD LAKE SUBDIVIS
 GOVERNMENT LOT
 SECTION 22, T.38N.,
 ONEIDA COUNTY, W

MUD
LAKE A407

A407



MUD LAKE SUBDIVISION
 GOVERNMENT LOT 3
 SECTION 22, T.38N., R.9E.
 ONEIDA COUNTY, WIS.

MUD
 LAKE

SCALE 1" = 66'
 BEARINGS ARE MAG. NORTH
 12 - 15 - 1962
 SURVEY BY N. LOFTUS
 G. DRIVAS

[Faint circular surveyor's seal with illegible text]