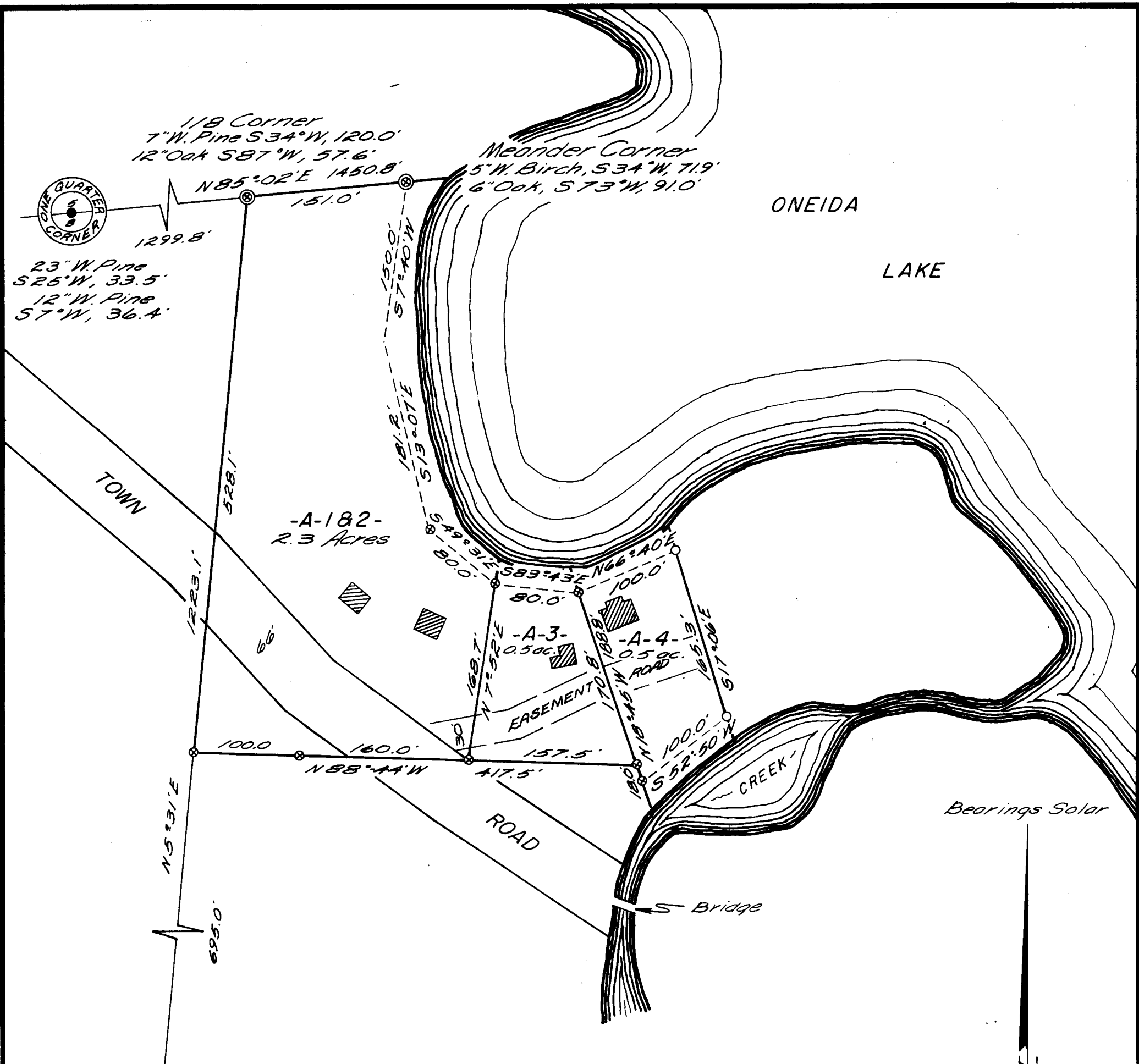


A4112

A4112



MAP #A4112
 DATE FILED 9-21-2023
 BY CH
 DESCRIPTION FILED
 ONEIDA CO. SURVEYOR'S OFFICE

Part of
GOV'T LOT 1
SECTION 8, T36N, R7E
 Oneida County, Wis.

~~HERBERT MOORE~~
 County Surveyor
 Oneida County, Wisconsin
 Courthouse
 Rhinelander, Wisconsin 54501
 15 1972

~~8 286~~
~~18-3607~~

Scale 1"=100'

Northwoods Surveyors Inc.

April, 1971
 Revised
 April, 1972
 May, 1972

John A. Fisher
 Land Surveyor
 266
 3
 J. Rein

A4112

A4112