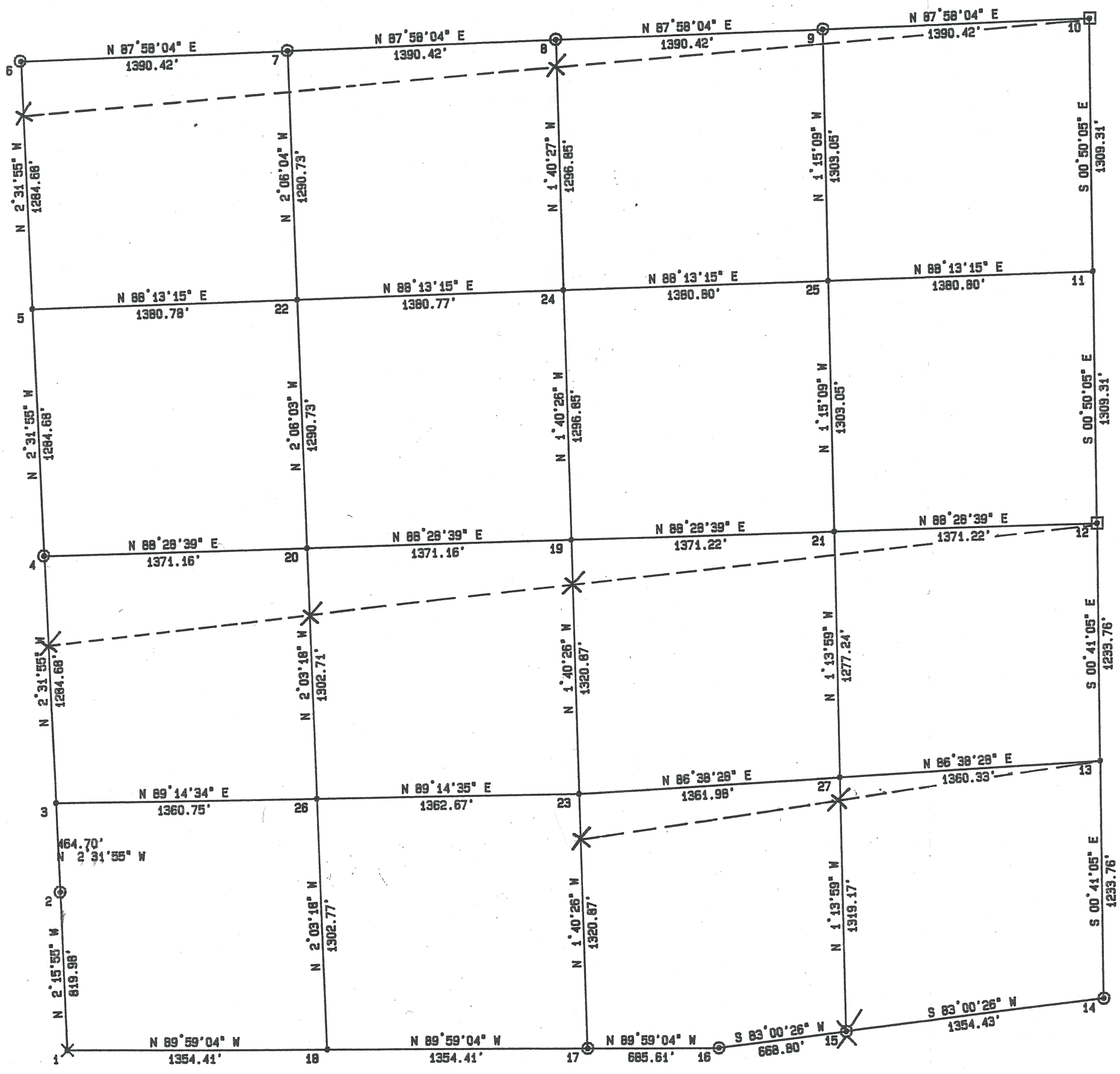


# SUBDIVISION OF SECTION 12, TOWNSHIP 39 NORTH, RANGE 9 EAST



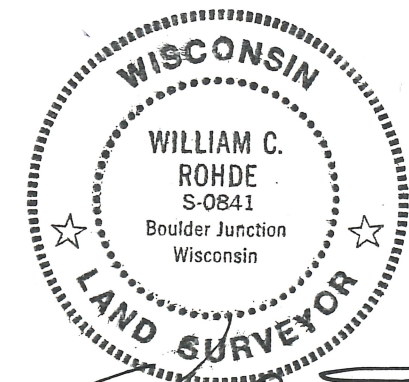
### NOTE:

SECTION SUBDIVISION BASED UPON A COMPASS RULE ADJUSTMENT OF THE EXTERIOR BOUNDARY SURVEY OF SECTION 12 IN 1972 BY ROBERT ILG, DNR (WCD) SURVEYOR.

NORTH



MAP # A4113  
 DATE FILED 9-22-2023  
 BY CH  
 DESCRIPTION FILED  
 ONEIDA CO. SURVEYOR'S OFFICE



*William C. Rohde*

COMPUTED & PLOTTED BY: WILLIAM C. ROHDE, RLS 841, 9/18/90

SCALE: 1" INCH = 600' FEET

SHEET 1 OF 1

