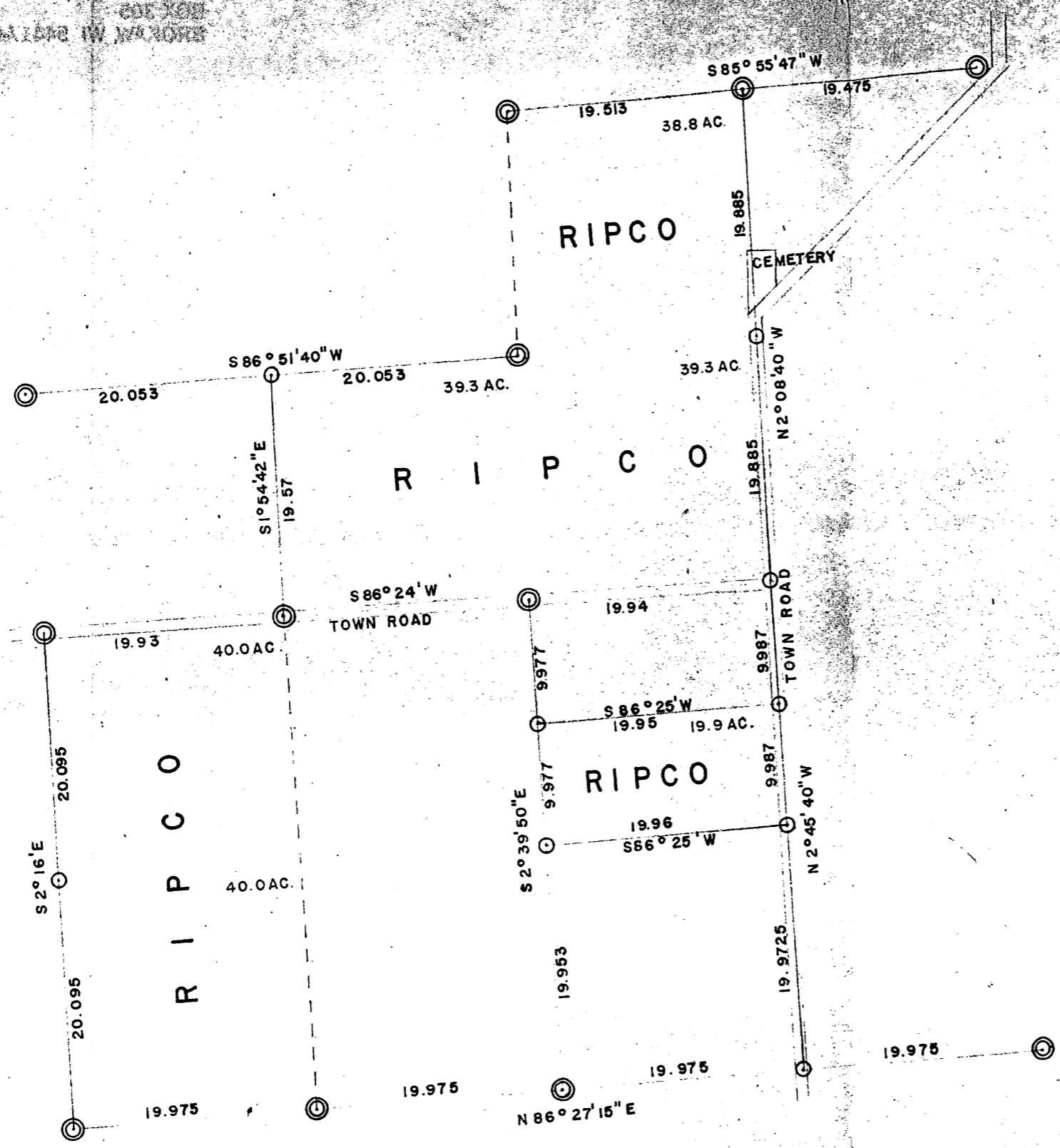


RECEIVED & FILED # 12
 Oneida County Surveyor's Office
 Date MAR 23 1963
 By [Signature]
 CCS Area #

RHINELANDER PAPER MILLS COMPANY
 WOODLANDS
 BOX 305
 STROKAY, WI 53188



RESURVEY OF SEC. 24. T. 37N, R. 6E.

ONEIDA COUNTY, WISCONSIN

◆ Corners established by this survey.
 ⊙ Other accepted corners.
 Bearings are magnetic.

SCALE 1 INCH = 10 CHAIN DATE 1-3-1963 Lwn. Bynjl

RHINELANDER PAPER COMPANY
 DIVISION OF ST. REGIS PAPER CO.
 RHINELANDER, WISCONSIN