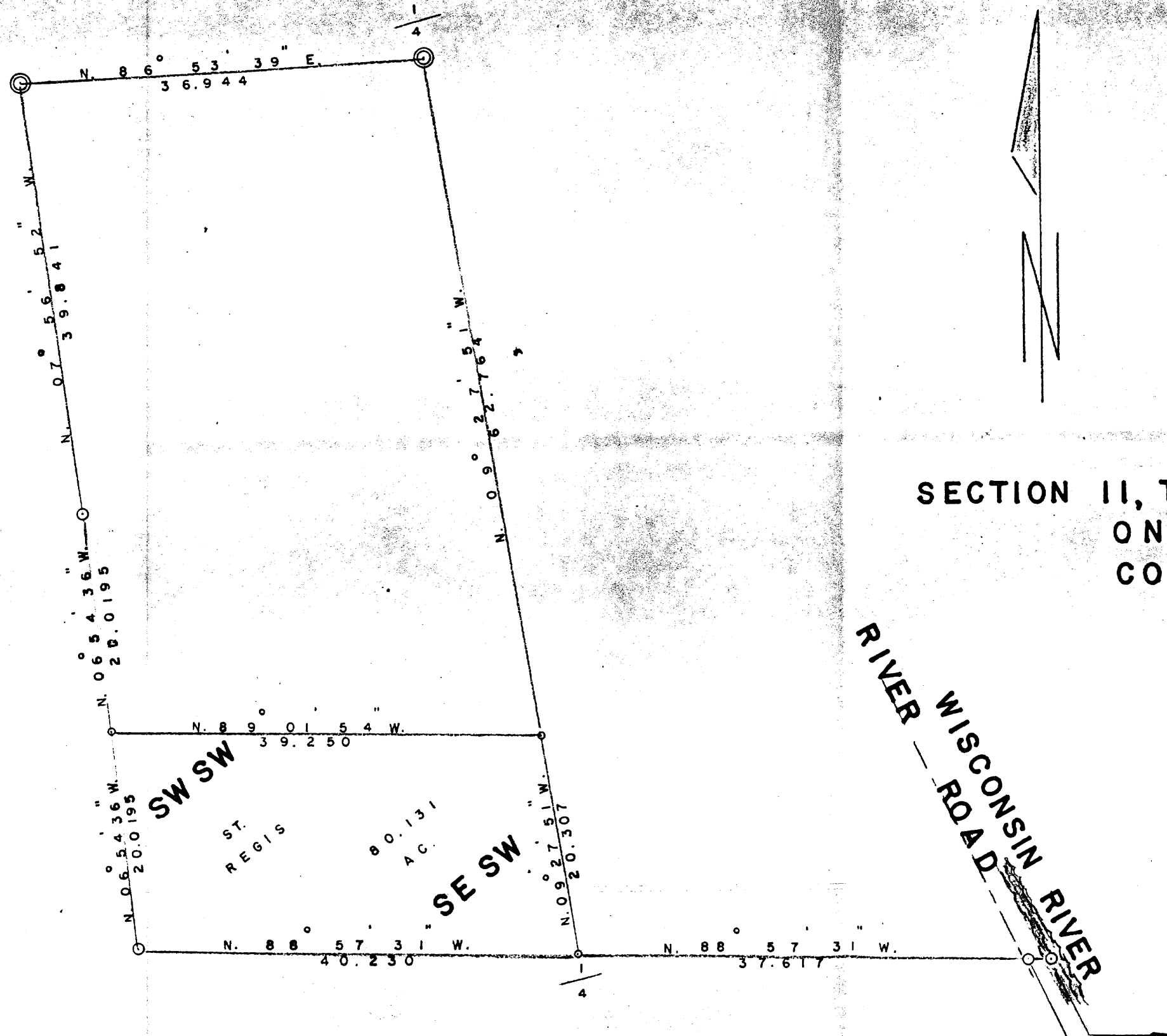


COUNTY OF ONEIDA
 MAR 25 1889
 DEPT. OF RECORDS
 REG. # 1000
 C.C.S. FILE #



SECTION 11, TWP. 36 N. RNG. 8 E.,
 ONEIDA
 COUNTY.

RIVER
 WISCONSIN RIVER
 ROAD

- ⊙ CONCRETE MON. (OTHER)
 - W 1/4 BY GEN. ENG. CO.
 - OLD POST FOUND BY ST REGIS (S.W. SEC. COR.)
 - ⊙ PIPES BY ST REGIS THIS DATE
- BEARINGS ARE MAGNETIC
 SCALE ONE CHAIN = .1 INCH

M.C. BY GENISOT ENG. CO. 2.613 CHS.
 WEST OF S.E. SECT. COR. ON LINE.
 SECT. COR. LIES IN WISCONSIN RIVER.

SURVEY & MAP BY GEORGE DRIVAS
 12. '68 5. 20. '69