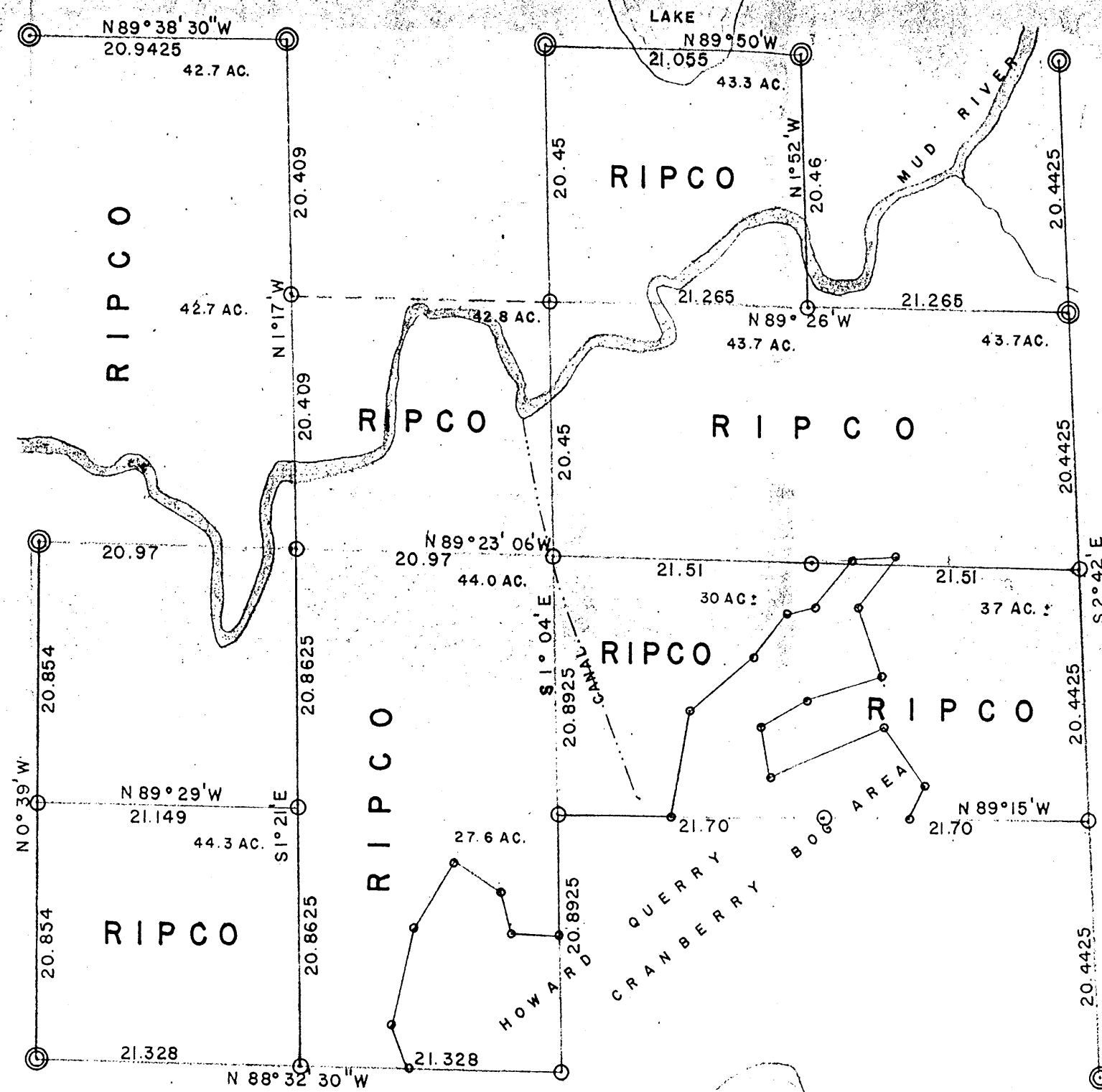


1120

WOODLANDS
WOODLANDS
WOODLANDS



RESURVEY OF SEC. 22. T. 39N R. 10E

ONEIDA COUNTY, WISCONSIN

- ⊕ Corners established by this survey.
 - ⊙ Other accepted corners.
- Bearings are magnetic.

SCALE = 1 TENTH" = 1 CHAIN DATE 3-8-1961 Dwn. By NJL

RHINELANDER PAPER COMPANY
DIVISION OF ST. REGIS PAPER CO.
RHINELANDER, WISCONSIN