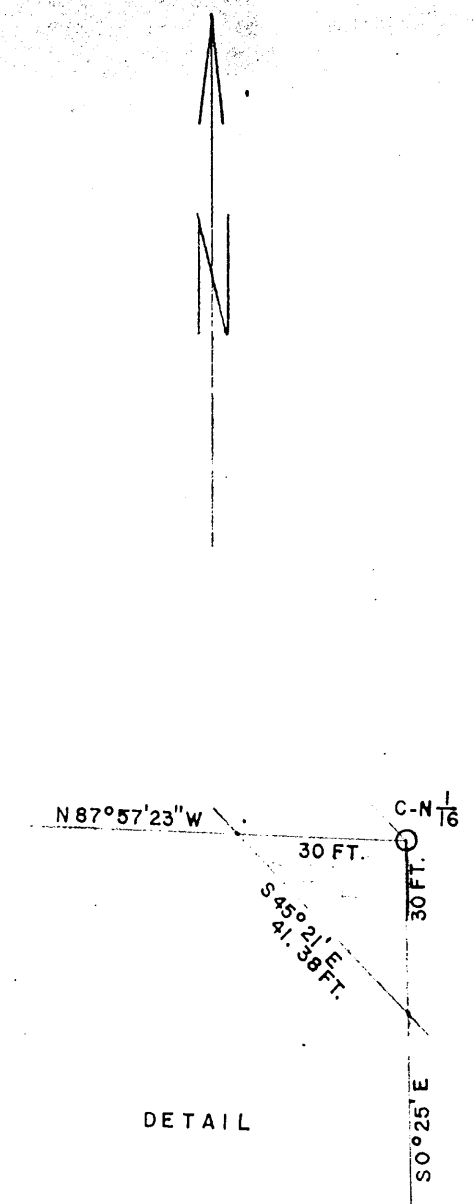
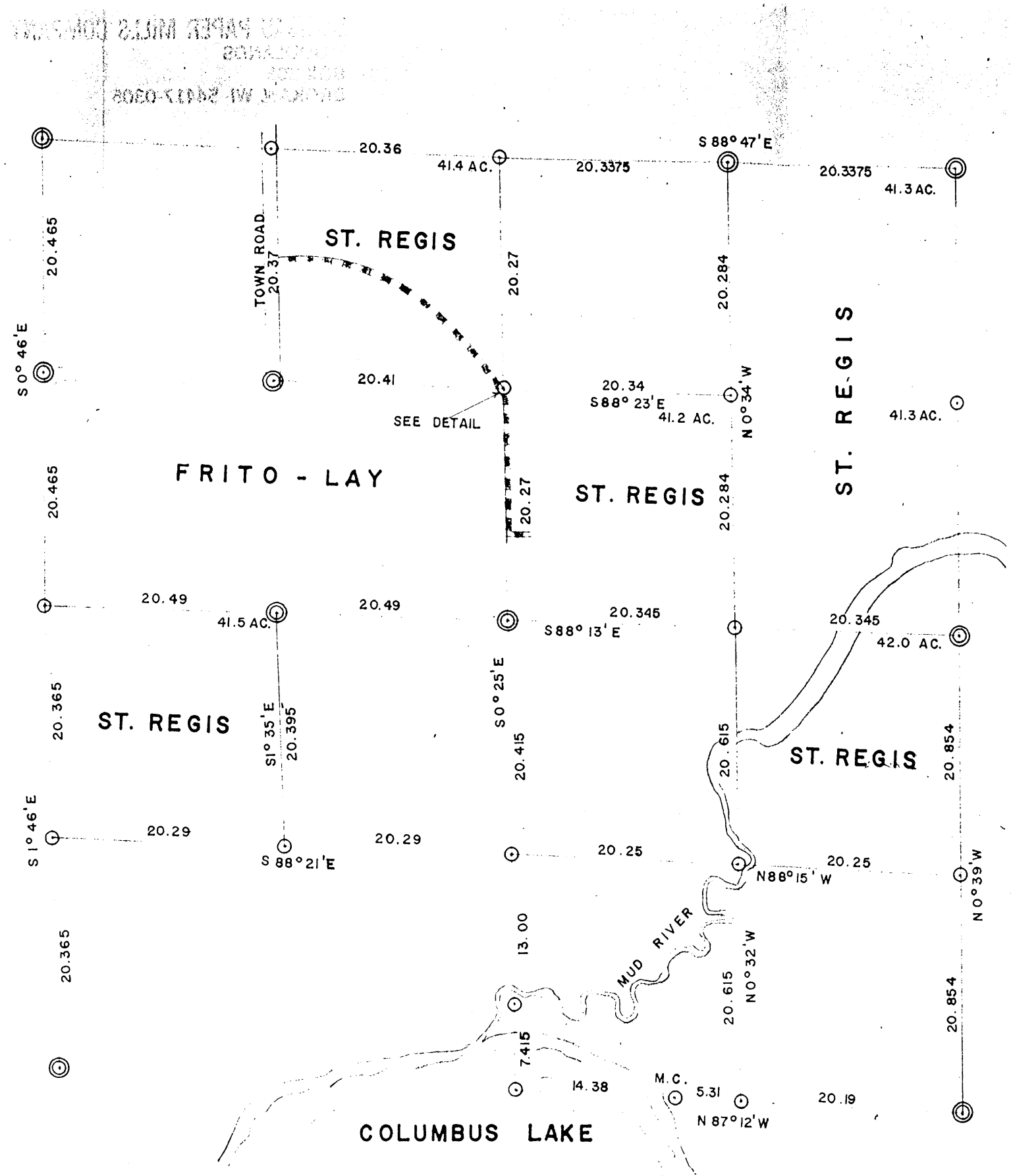


172



RESURVEY OF SEC 21 T. 39N, R. 10E

ONEIDA COUNTY, N.Y.

(C) Corners established by this survey.
 (O) Other corners.
 --- Boundary line.
 --- ROAD AREA

SCALE 1 INCH = 10 CHAINS

2-28-63

RAINELANDER ENGINEERING COMPANY
DIVISION OF STATE ENGINEERING