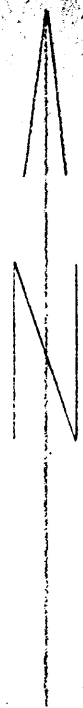
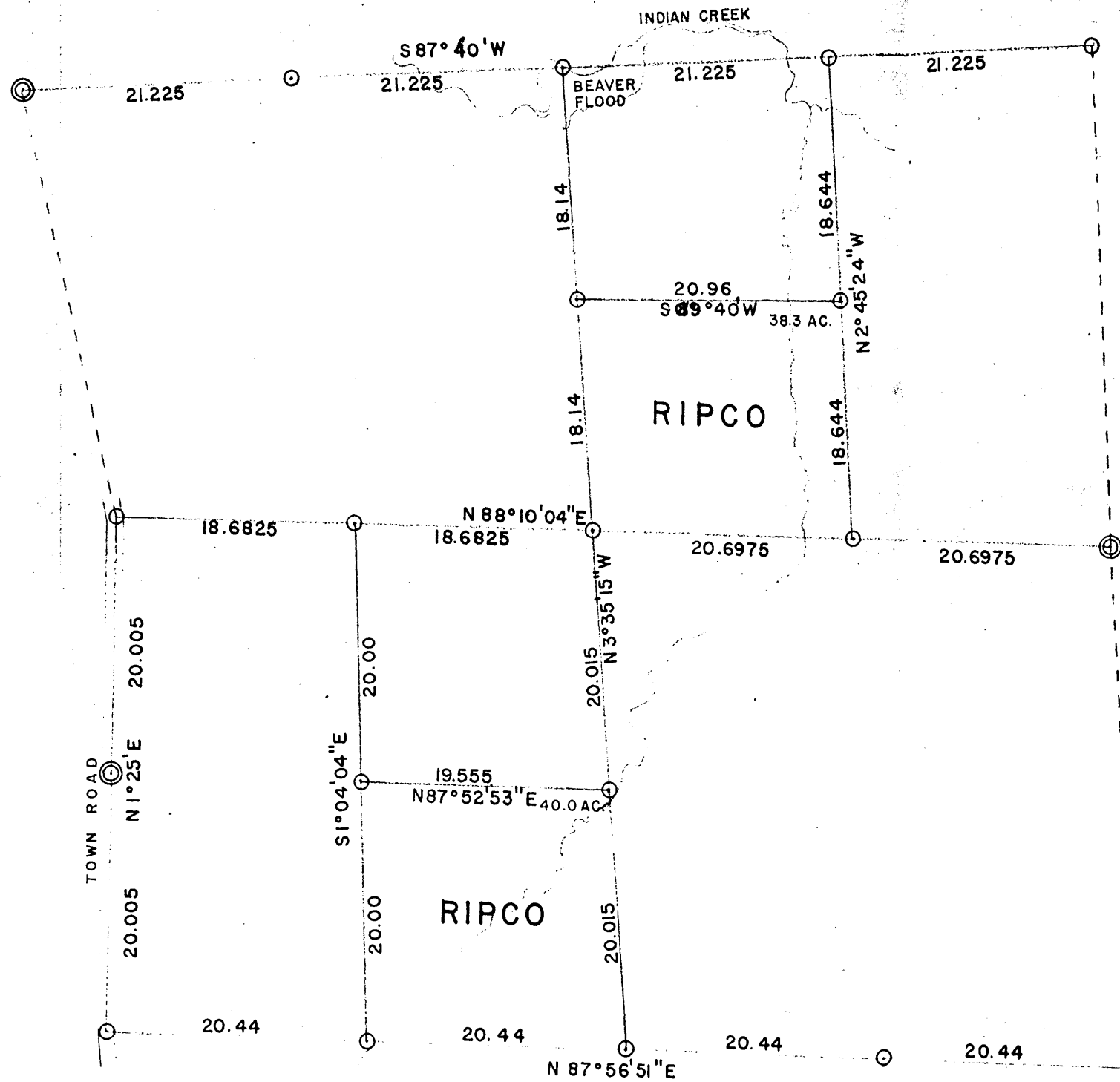


MAR 23 1961

196



RESURVEY OF SEC. 35 . T.39N R.9E

ONEIDA COUNTY, WISCONSIN

- ⊙ Corner of Section 35
- ⊙ Corner of Section 36
- ⊙ Corner of Section 37
- ⊙ Corner of Section 38

SCALE: 1 TENTH" = 1 CHAIN DATE: 1-24-1961 NJL

REINTEGRATED BY