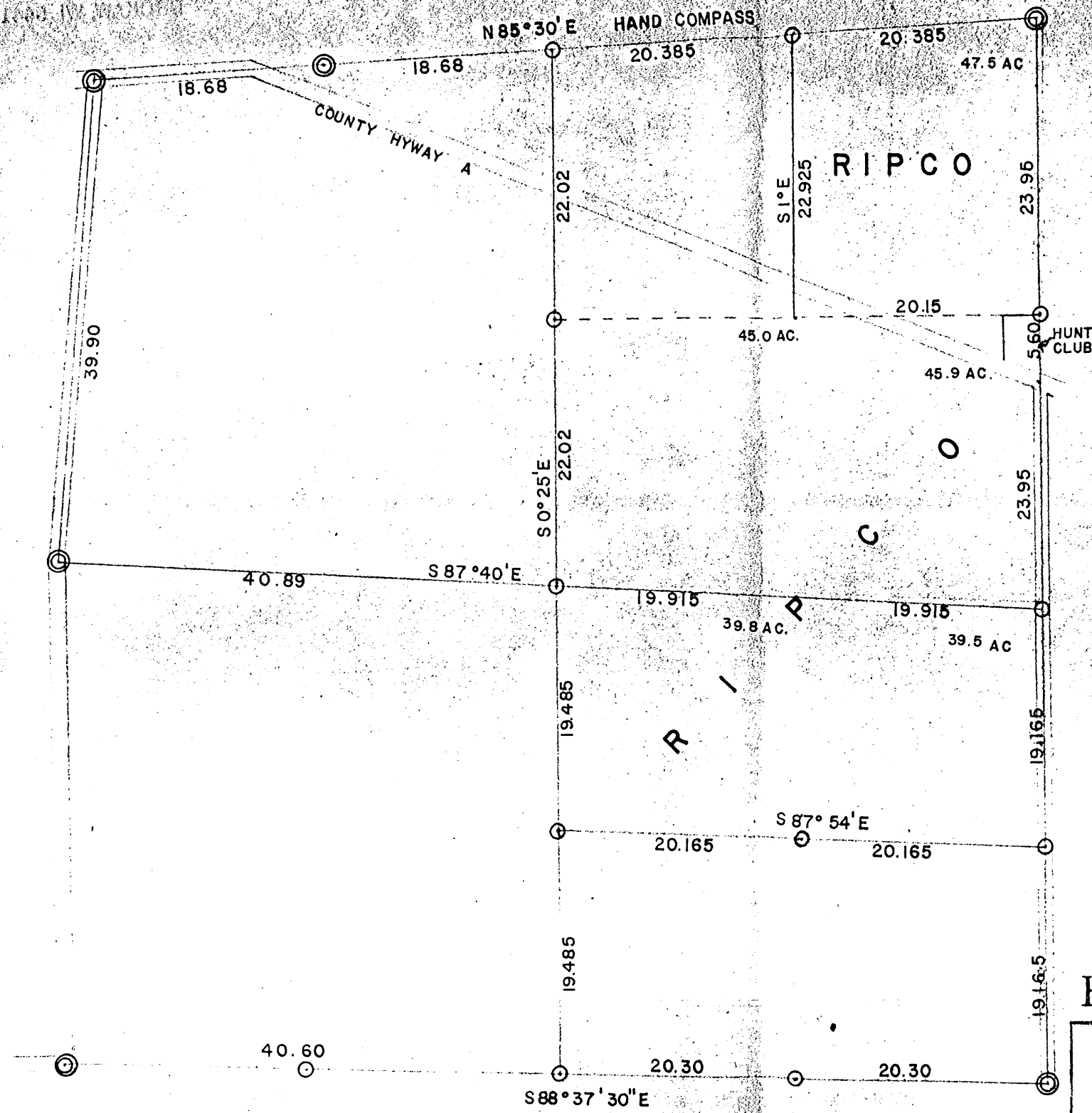


RHINELANDER PAPER COMPANY
 2001 AVENUE
 COCOA BEACH, FLORIDA 32931



RESURVEY OF SEC. 18 . T38N, R10E

ONEIDA COUNTY, WISCONSIN

- ⊕ Corners established by this survey.
 - ⊙ Other accepted corners.
- Bearings are magnetic.

SCALE 1" = 10 CHAIN DATE 3-14-1962 Dwn. By NJL

RHINELANDER PAPER COMPANY
 DIVISION OF ST. REGIS PAPER CO.