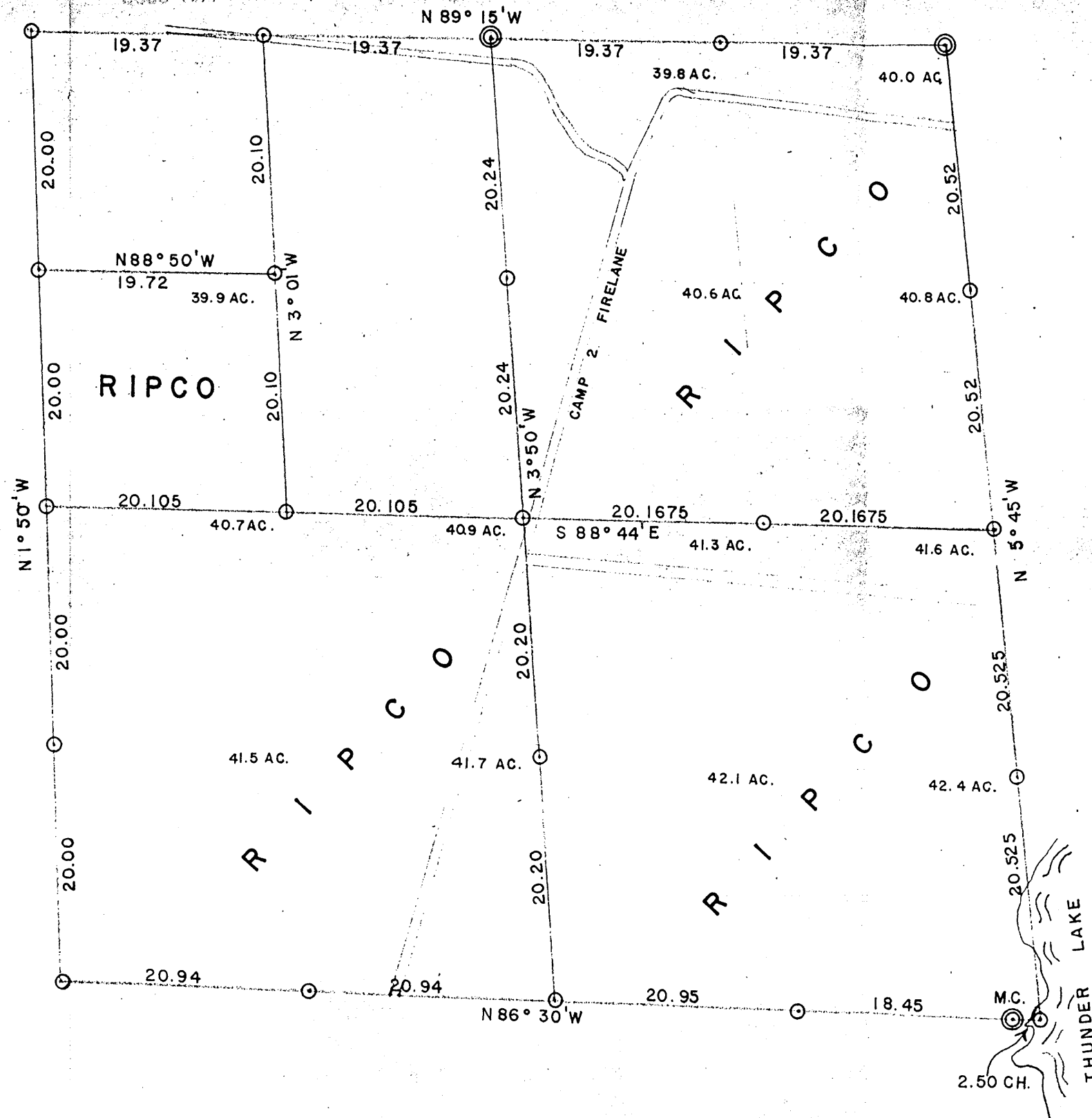


MAR 25 1960

1412



RESURVEY OF SEC. 9 . T.38N R.10E

ONEIDA COUNTY, WISCONSIN

- ⊙ Corners established by this survey.
 - ⊕ Other accepted corners.
- Bearings are magnetic.

SCALE $\frac{1}{10}$ " = 1 CHAIN DATE 8-19-60 Dwn. RYNAL

RHINELANDER PAPER COMPANY