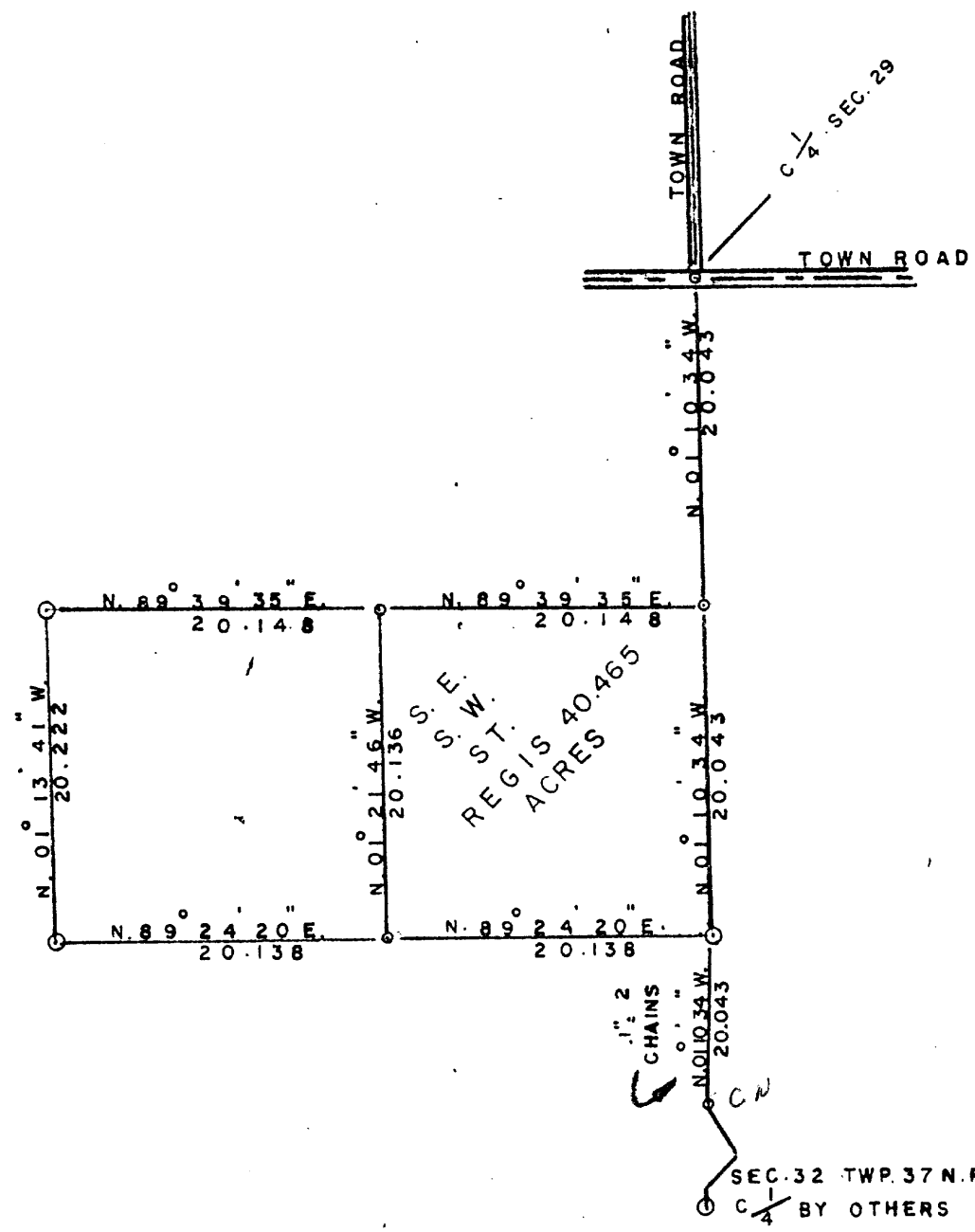


A 431
 MAR. 25. 1903
 BY ...
 CCS P. 100 #

YASMSD OLHA PEGAS HISS ...

Handwritten scribble



A PART OF SECTION 29, TWP. 37 N. R. 7 E., ONEIDA COUNTY, WIS.

○ CORNERS BY OTHERS
 ○ CORNERS SET THIS SURVEY
 SCALE - ONE TENTH" = ONE CH.
 BEARINGS ARE MAGNETIC
 ST. REGIS PAPER CO.

WT