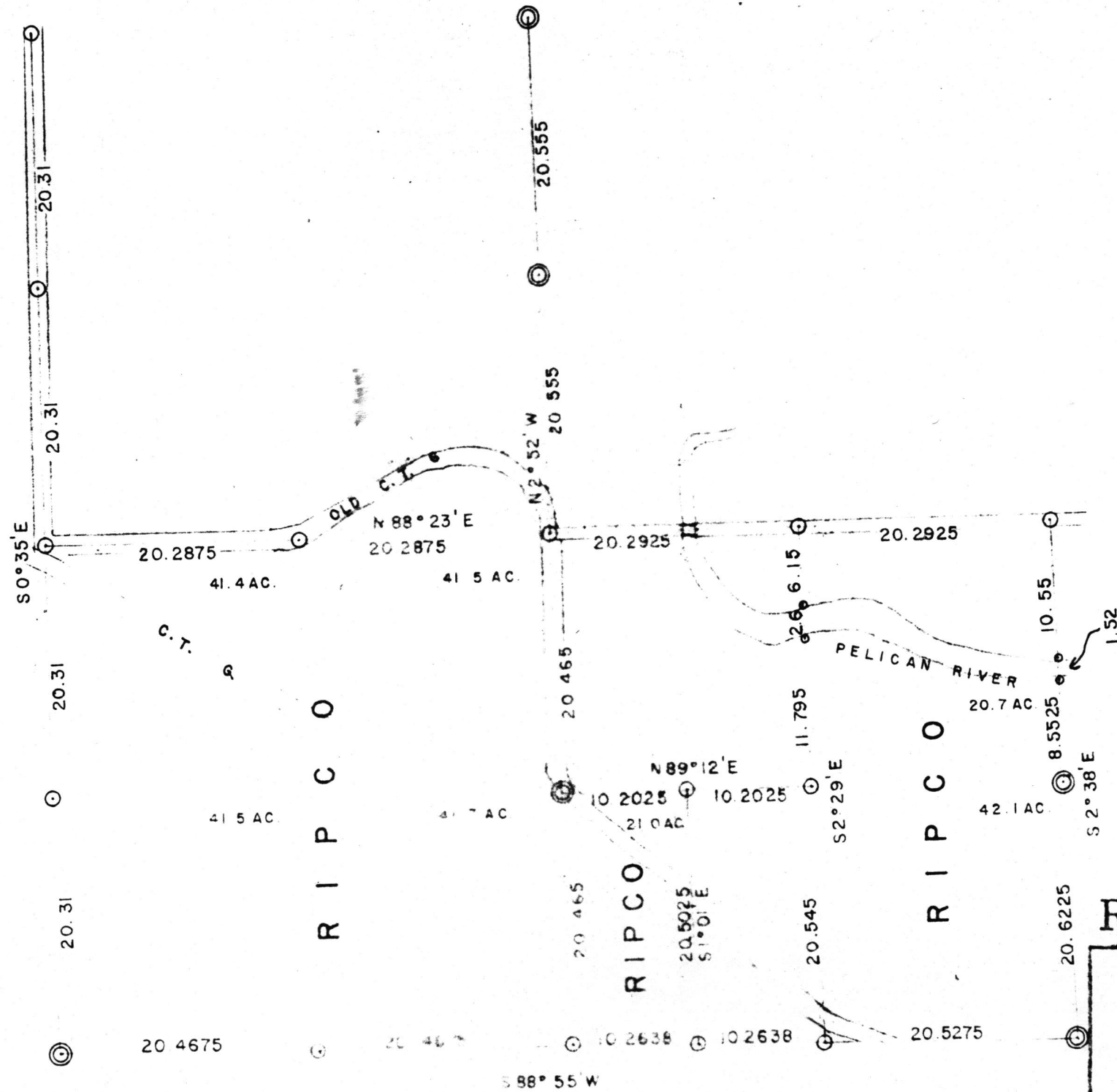


RECEIVED & FILED # **A433**  
 Oneida County Surveyor's Office  
 Date **MAR. 23 1961**  
 By *[Signature]*  
 OCS Area #

RHEINLANDER PAPER MILLS  
 DIVISION OF ST. REGIS PAPER CO.  
 ONEIDA, WISCONSIN  
 MAR 23 1961



**RESURVEY OF SEC.21 . T.36N R.9E**

**ONEIDA COUNTY, WISCONSIN**

- ⊙ Corners established by this survey.
  - ⊙ Other accepted corners.
- Bearings are magnetic.

SCALE  $\frac{1}{10}$ " = 1 CHAIN DATE 3-14-1961 Dwn. By NJL

**RHINELANDER PAPER COMPANY**  
 DIVISION OF ST. REGIS PAPER CO.  
 RHINELANDER, WISCONSIN

**A433**

**A433**

**A433**