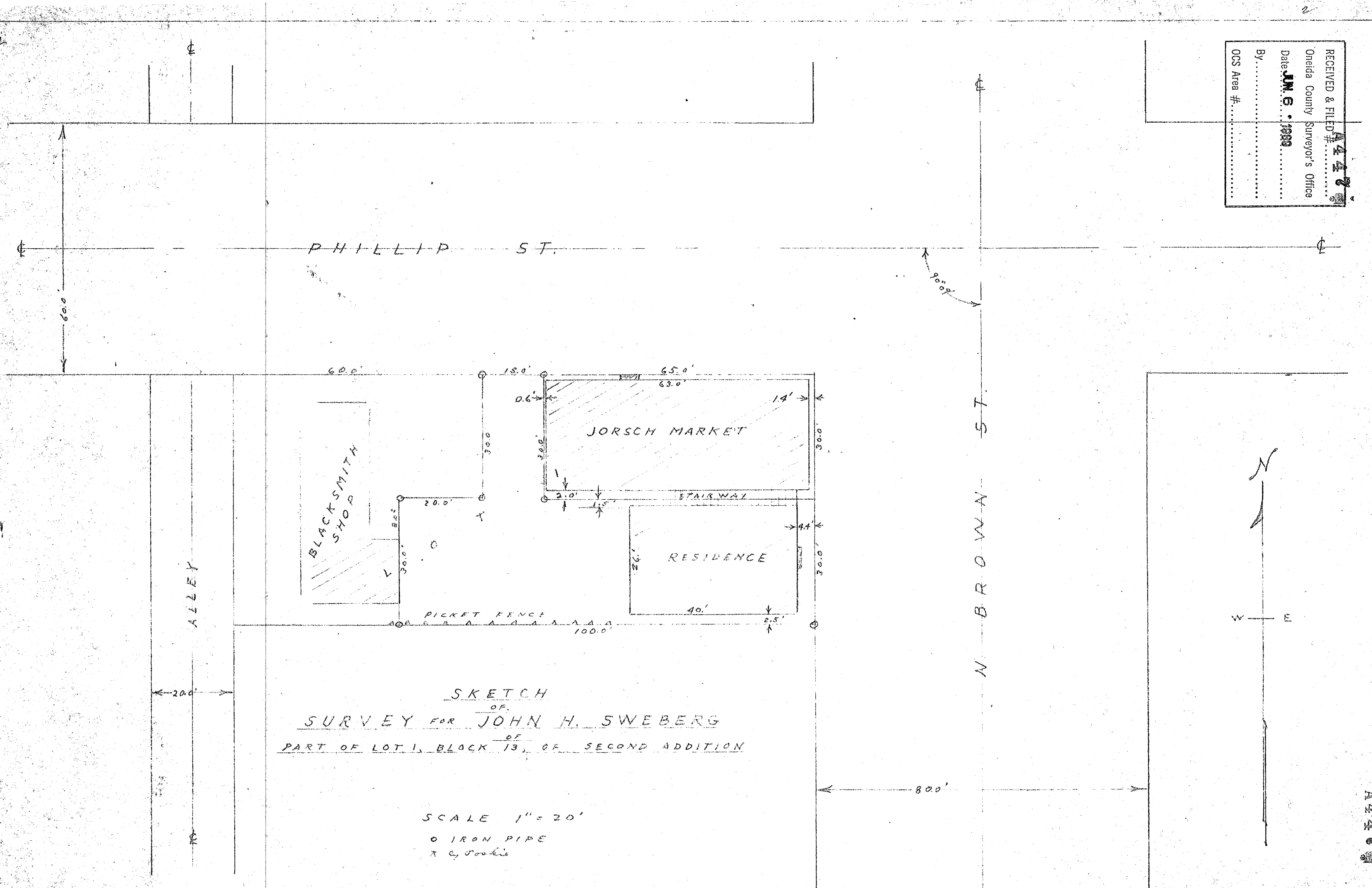


RECEIVED & FILED # **A 4 4 2**  
 Oneida County Surveyor's Office  
 Date **JUN 6 1939**  
 By .....  
 OCS Area # .....



SKETCH  
 OF  
 SURVEY FOR JOHN H. SWEBERG  
 OF  
 PART OF LOT 1, BLOCK 13, OF SECOND ADDITION

SCALE 1" = 20'

O IRON PIPE  
 X C, POULIE

A 4 4 2