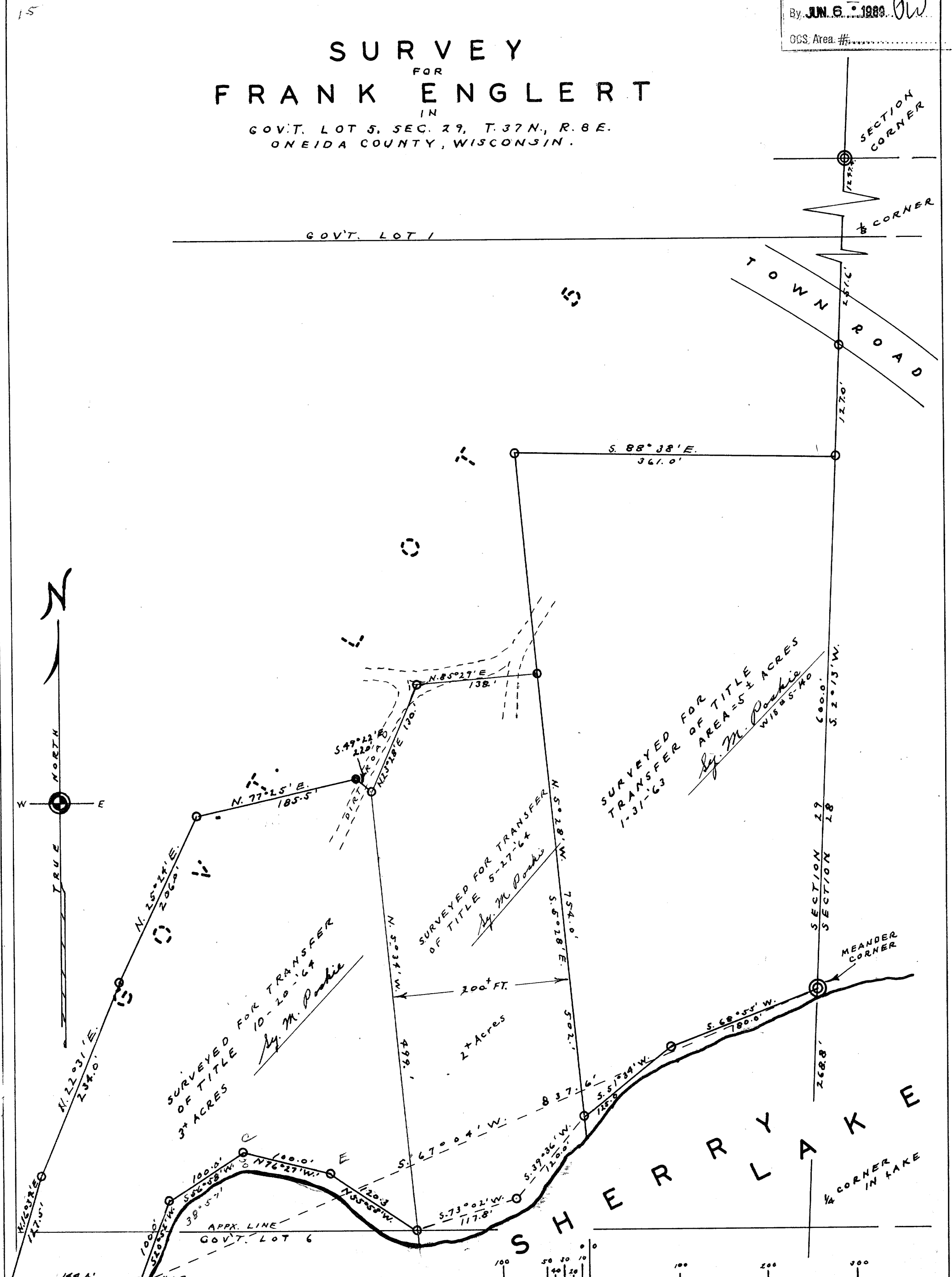


RECEIVED & FILED **449**
 Oneida County, Wisconsin
 Date: **JUN 5**
 By: **JUN 6 1988** *pw*
 OCS Area #:

SURVEY FOR FRANK ENGLERT

IN GOV'T. LOT 5, SEC. 29, T. 37 N., R. 8 E.
 ONEIDA COUNTY, WISCONSIN.



A449

15

4" MAPLE N. 67° 03' W. 21.2'
 6" OAK N. 89° 38' W. 22.1'

SCALE 1" = 100'

OCS Area #:
 By:
 JUN 6 1988