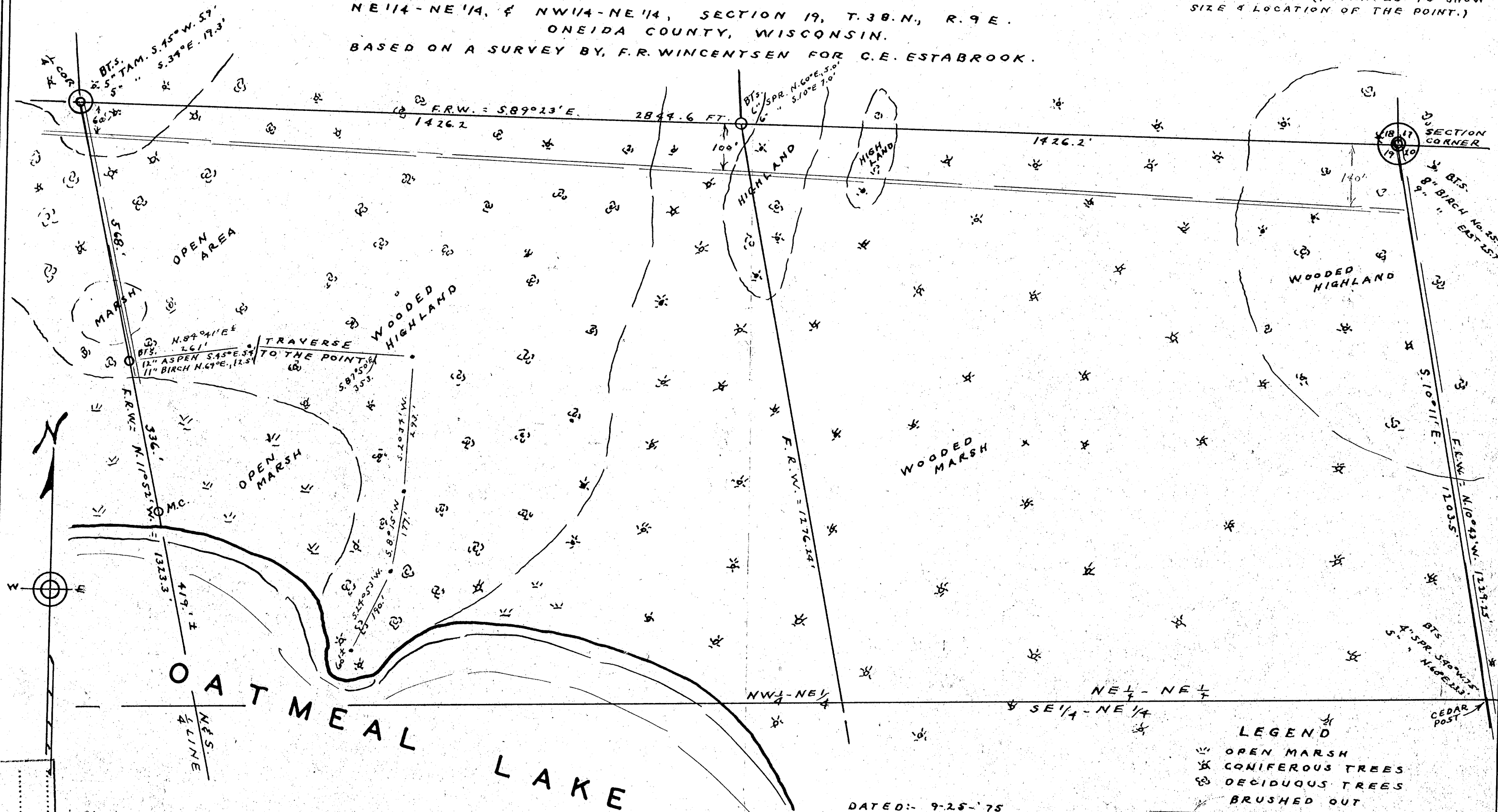


SURVEY FOR HARLEY A. BUTLER

OF
 NE 1/4 - NE 1/4, & NW 1/4 - NE 1/4, SECTION 19, T. 38. N., R. 9. E.
 ONEIDA COUNTY, WISCONSIN.
 BASED ON A SURVEY BY, F. R. WINCENTSEN FOR C. E. ESTABROOK.

NOTE:-
 REVISED - 3-29-1978
 ADDED BEARINGS & DISTANCES OF
 TRAVERSE LINE TO POINT; THEY
 MAY NOT BE ORIENTED TO EXTERIOR
 BOUNDARIES. (INTENDED TO SHOW
 SIZE & LOCATION OF THE POINT.)



- LEGEND**
- ☐ OPEN MARSH
 - ✖ CONIFEROUS TREES
 - ⊗ DECIDUOUS TREES
 - BRUSHED OUT
 - TRAVERSE LINES
 - IRON PIPE MARKER
 - F.R.W. F. R. WINCENTSEN

DATED: 9-25-75