

RECEIVED & FILED # A457
 On: da County Surveyor's Office
 Date: JUN. 19 1989
 By: J.R.
 OCS Area #:

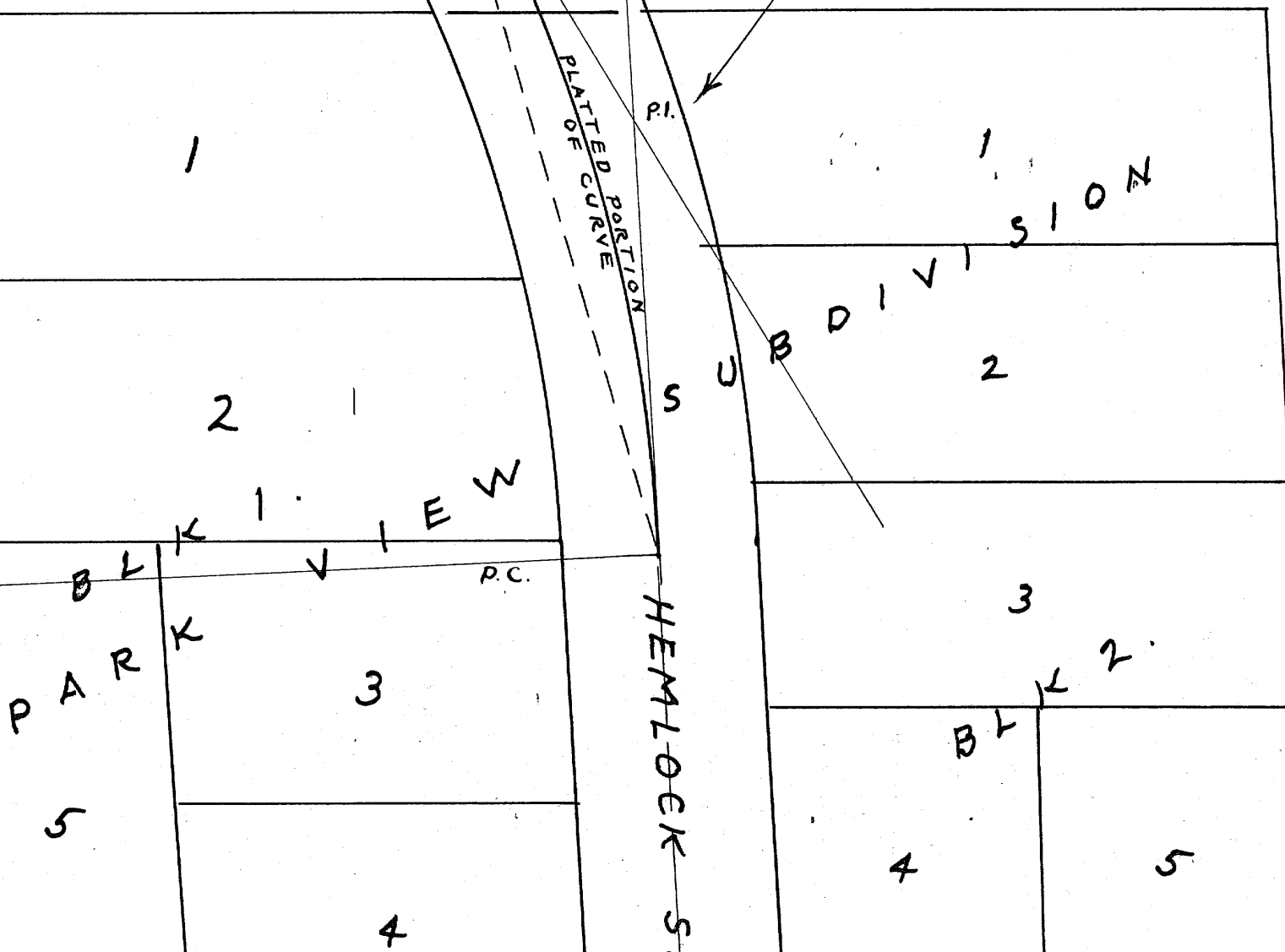
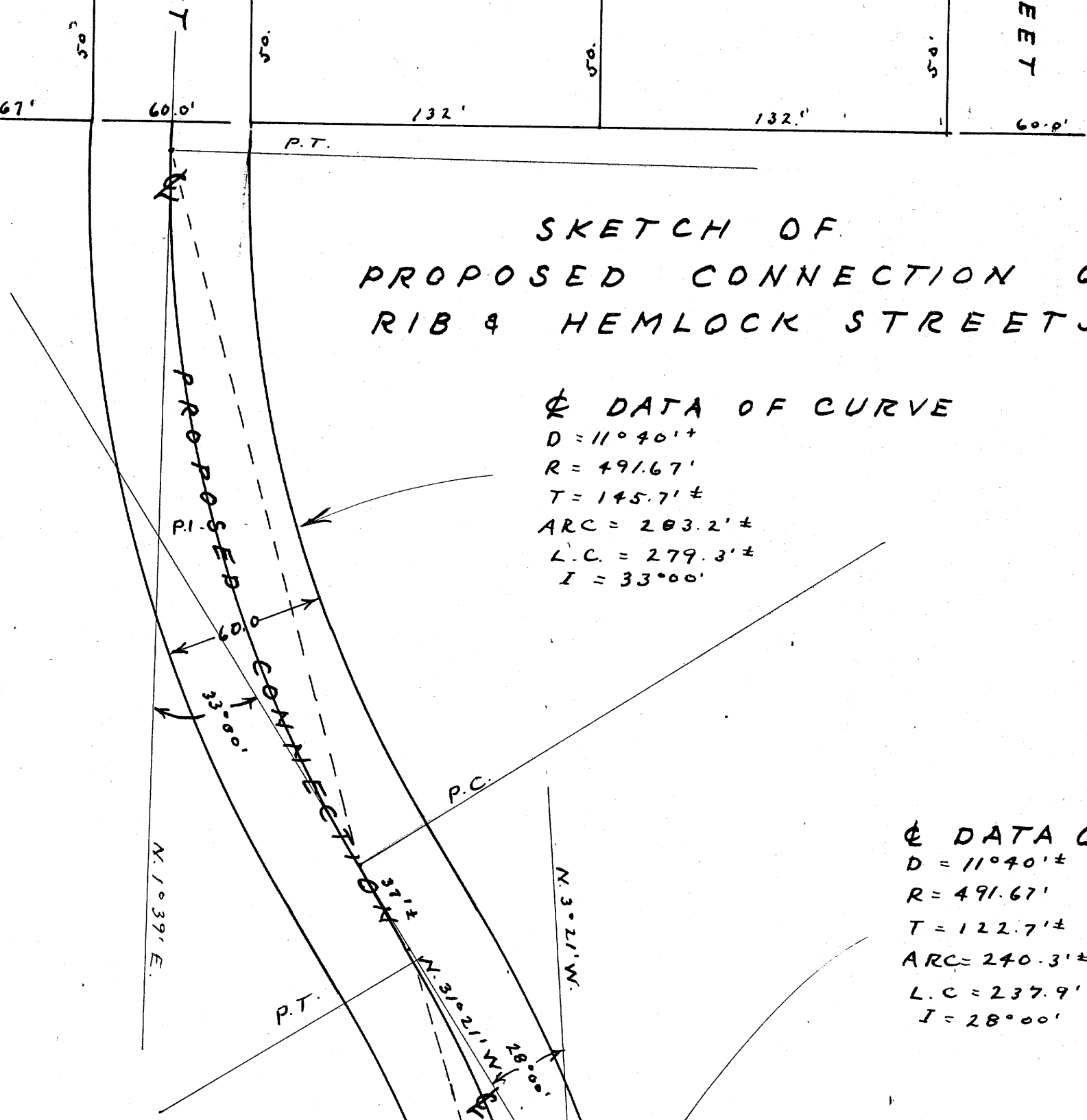
RIB STREET

VAUGHN STREET

SKETCH OF PROPOSED CONNECTION OF RIB & HEMLOCK STREETS

DATA OF CURVE
 $D = 11^{\circ}40' \pm$
 $R = 491.67'$
 $T = 145.7' \pm$
 $ARC = 283.2' \pm$
 $L.C. = 279.3' \pm$
 $I = 33^{\circ}00'$

DATA OF CURVE
 $D = 11^{\circ}40' \pm$
 $R = 491.67'$
 $T = 122.7' \pm$
 $ARC = 240.3' \pm$
 $L.C. = 237.9' \pm$
 $I = 28^{\circ}00'$



1" = 50.
 8-25-64
 Poskie
 # S-140