

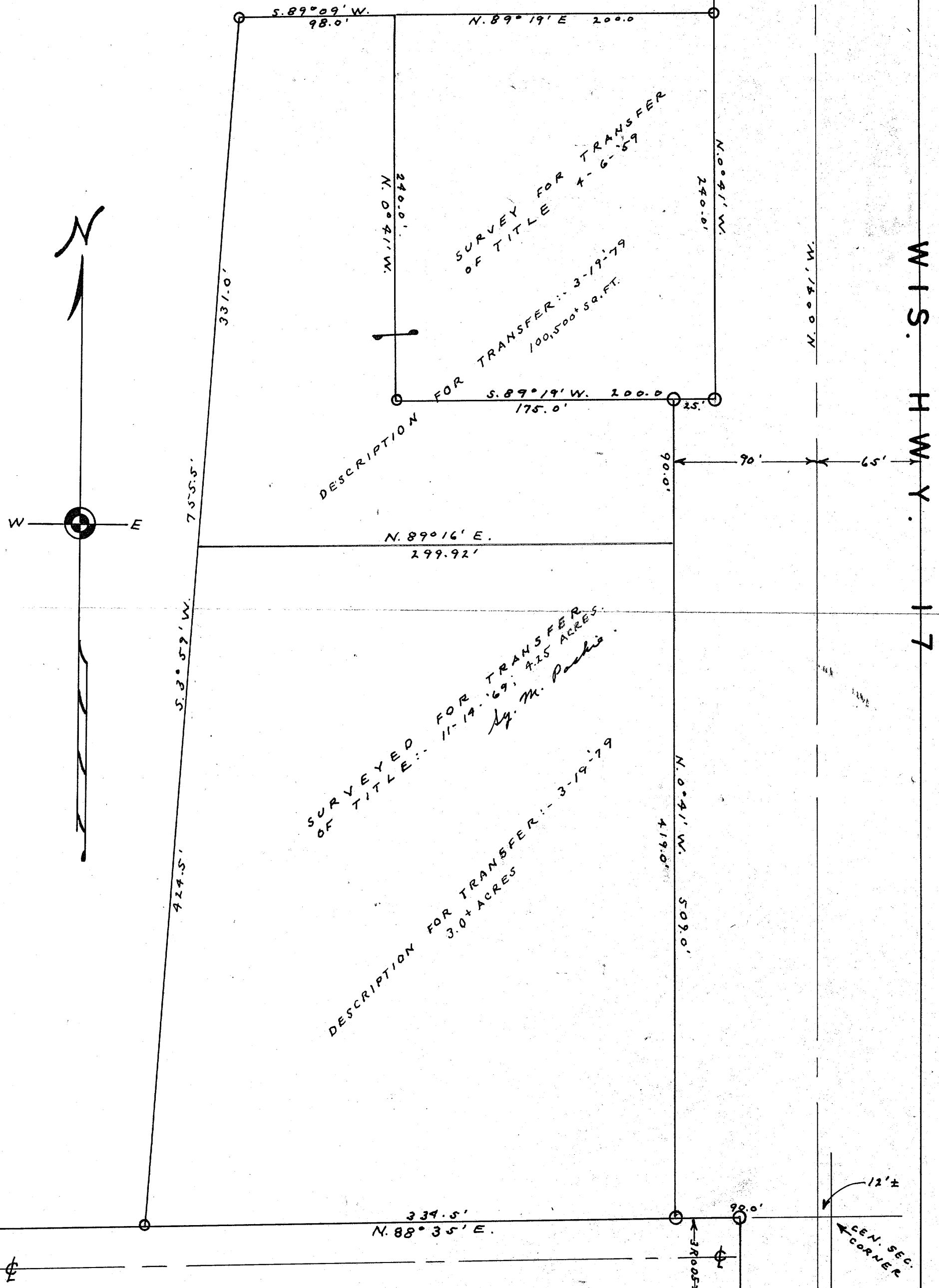
RECEIVED & FILED # **A4584**
 Oneida County Surveyor's Office
 Date **MAR**
 By **JUN 1 1980**
 OCS Area #

SURVEY FOR BRUCE RHODE

A4584

REVISED: -
3-19-79
Sy. M. Poshie

IN
SE 1/4 - NW 1/4, SEC. 23, T. 38 N., R. 9 E.
ONEIDA COUNTY, WISCONSIN.



DATE: 11-19-69 *Sy. M. Poshie*