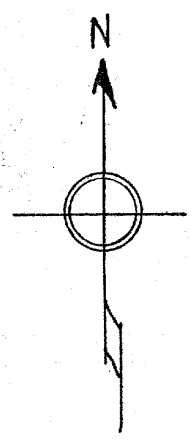


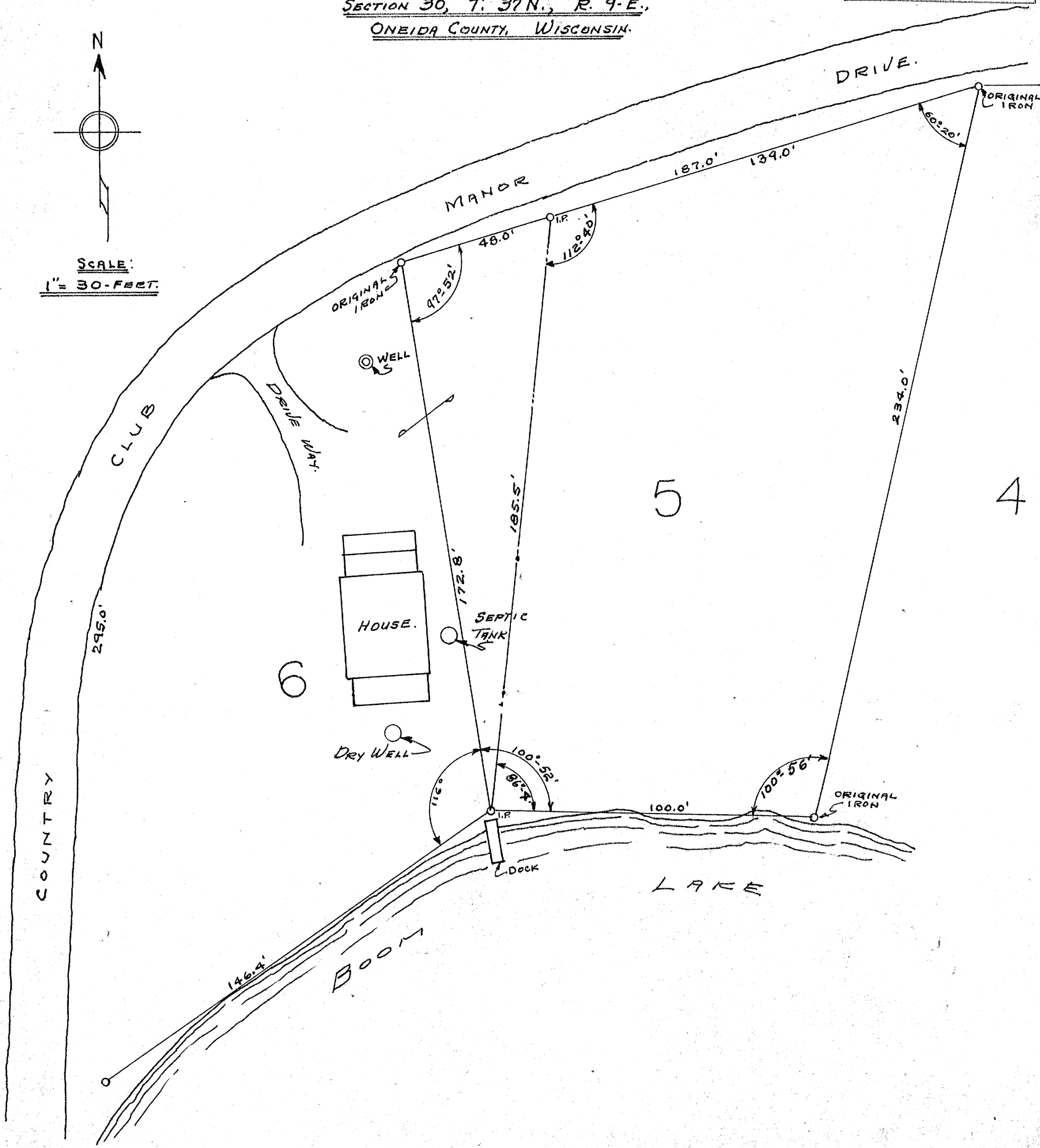
A464

RECEIVED & FILED # **A464**
 Oneida County Surveyor's Office
 Date **JUN. 19 1989**
 By **M.A.R.**
 OCS Area #

PART OF BLOCK (G) OF THE COUNTRY CLUB MANOR PLAT.
RECORDED OCT. 8, 1926 - IN VOL. 5 OF PLATS, PAGE 33.
BEING A PART OF GOV. LOT 3.
SECTION 30, T. 37N., R. 9-E.,
ONEIDA COUNTY, WISCONSIN.



SCALE:
 1" = 30-Feet.



JOB. NO. 5164			DISC. SURVEY OF PART OF LOT 5, OF BLOCK "G" OF COUNTRY CLUB MANOR PLAT.		
REVISIONS			FOR MR. D. PERRAULT. (OWNER)		
NO.	DATE	BY	Rhineland Wisconsin		
			DATE	ROWINSKI ENGINEERING CO.	
			8/19/89	DWG. NO.	