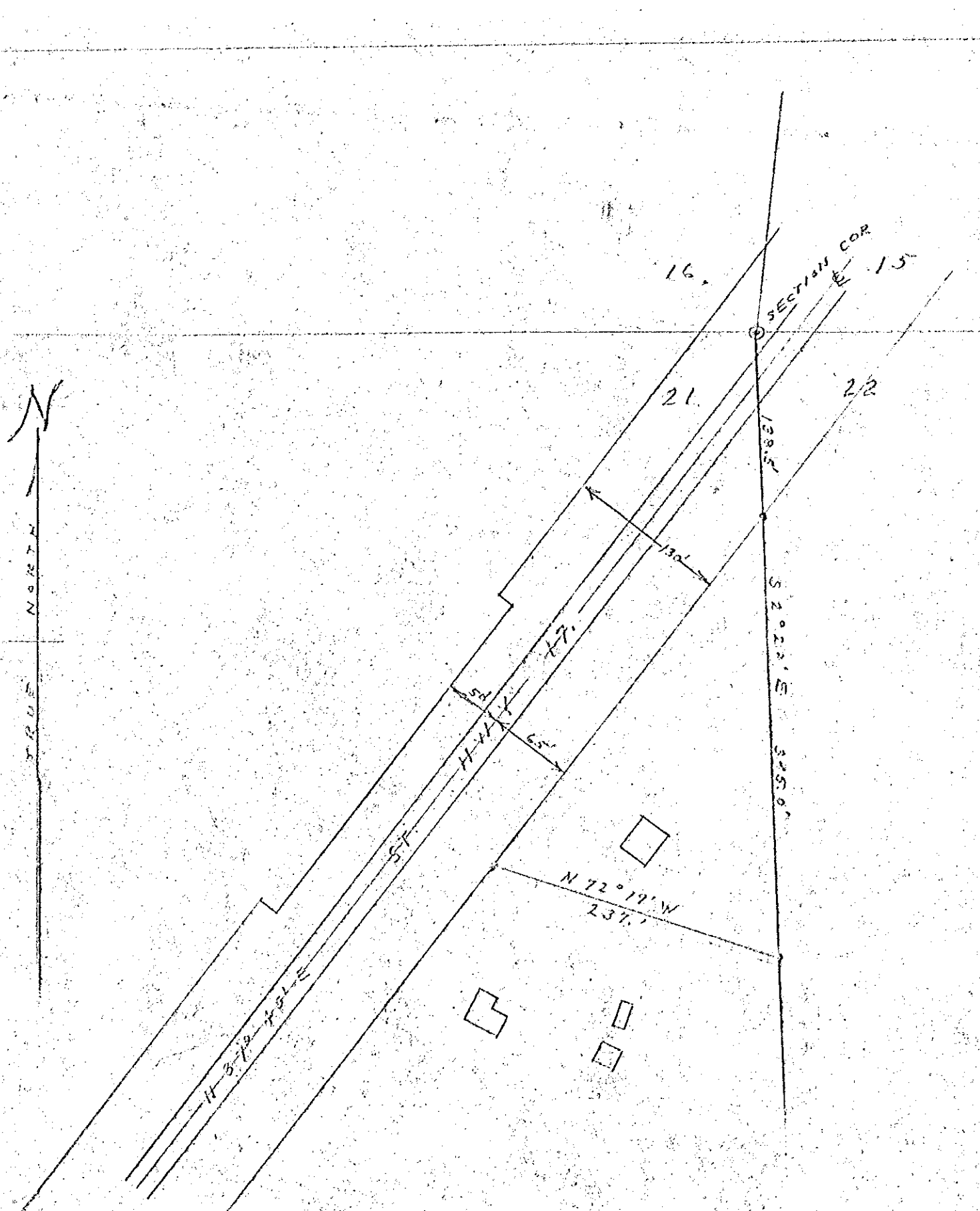


RECEIVED & FILED # A 4 6 3
 Gracia County Surveyor's Office
 Date JUN 19 1933
 By MAR
 CCS Area #



SKETCH OF SURVEY FOR
 VICTOR RHODE
 SCALE 1" = 100'
 * INDICATE 3" IRON PIPES.

Cy Postie
 7-6-35.

463