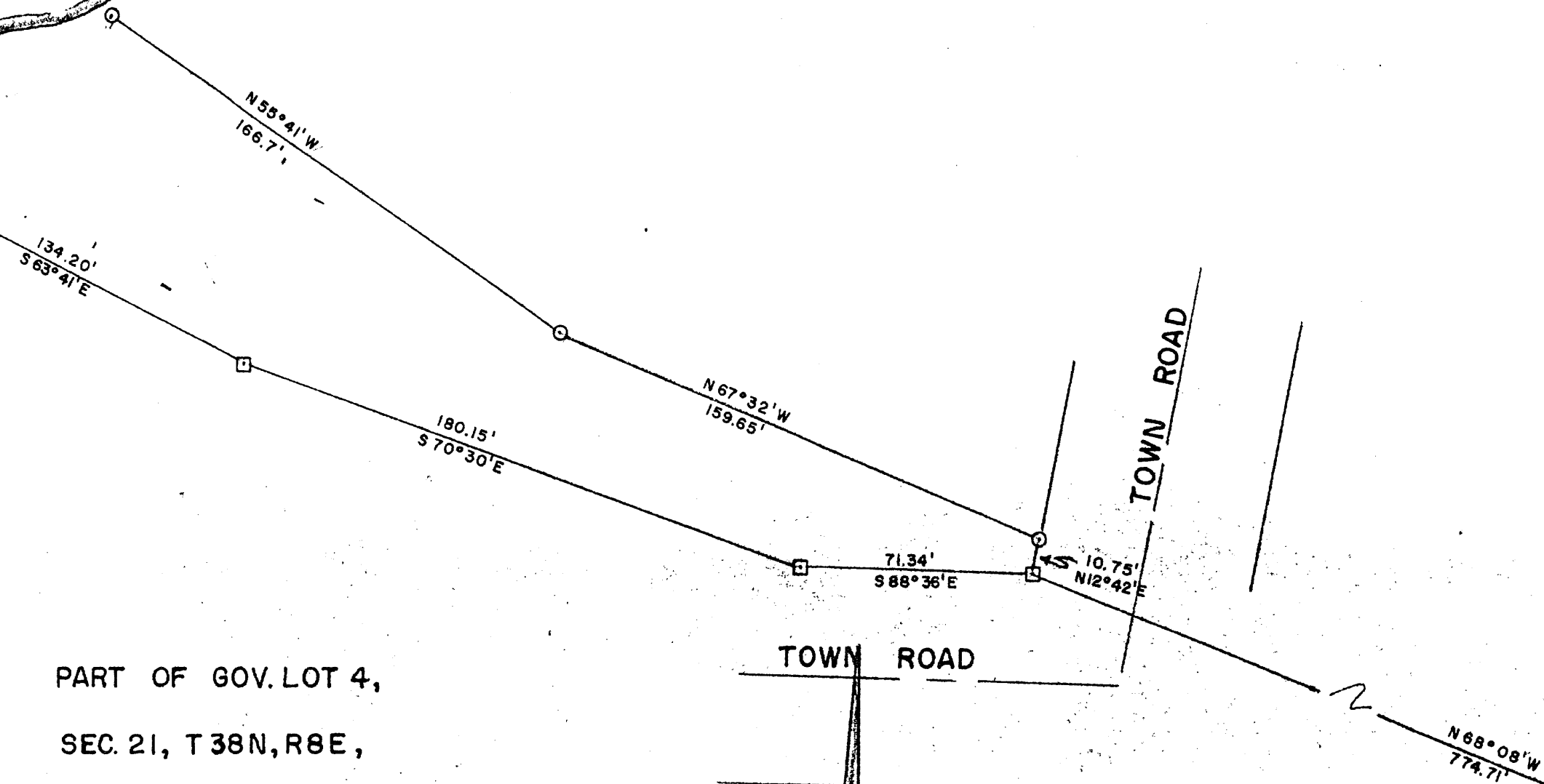
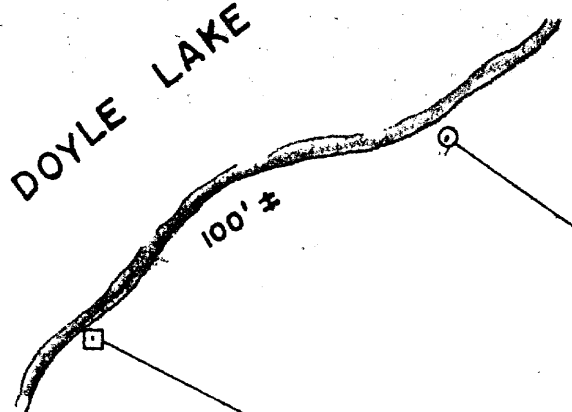


TOM DOYLE LAKE

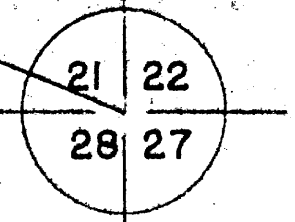


PART OF GOV. LOT 4,
SEC. 21, T38N, R8E,

M.C.

EAST LINE SEC 21

N 1° 05' W
946.5'



A472

A472

RECEIVED & FILED # A472
 Onida County Surveyor's Office
 Date JUN 20 1988
 By [Signature]
 OCS Area #



REVISIONS			FRED ZANTOW		
NO	DATE	BY	BARABOO WISC.		
1					
2					
3					
4					
			DRAWN BY	SCALE	MATERIAL
			GHW'S	1" = 40'	
			DATE	DRAWING NO.	
			18 OCT. 88	A186	