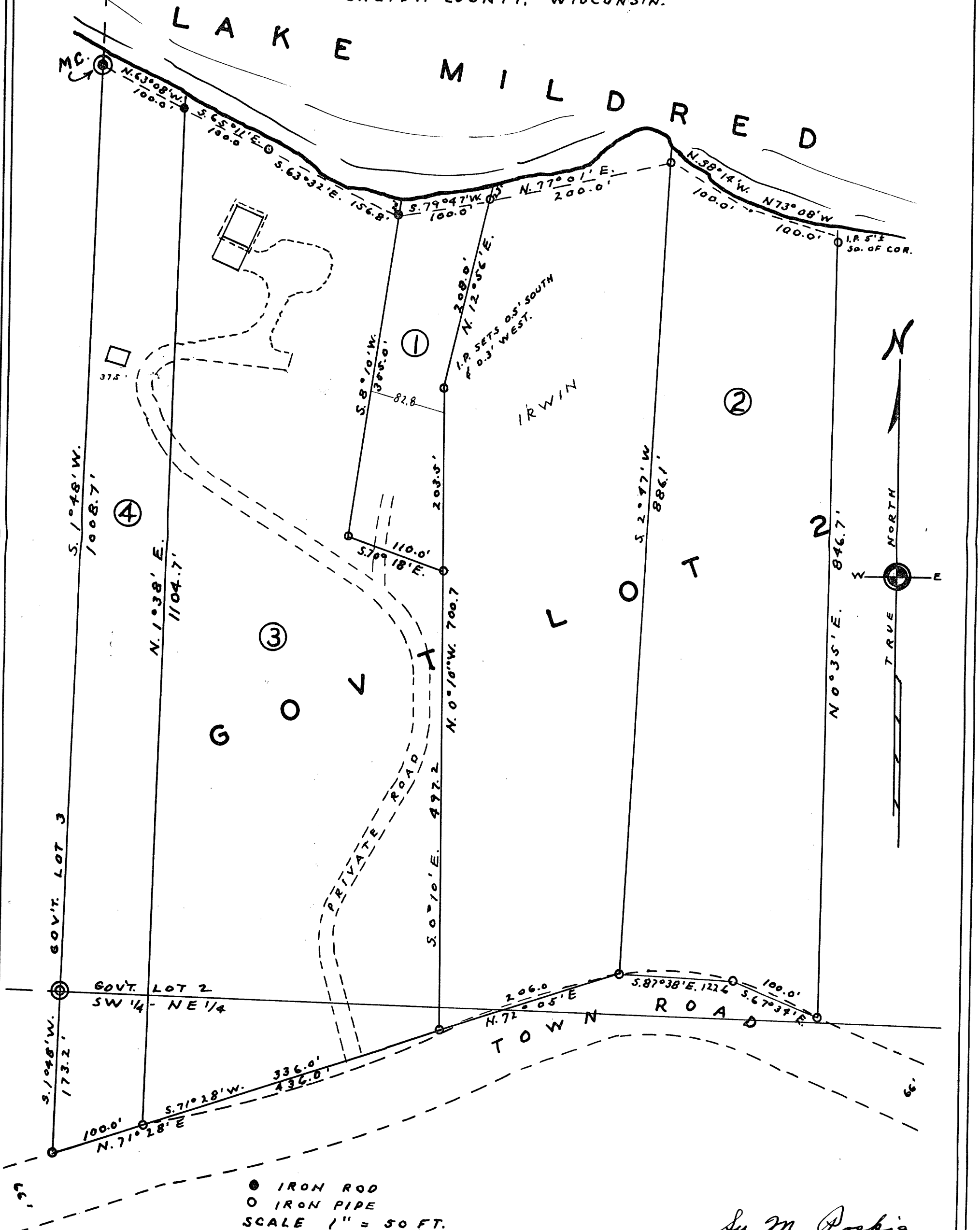


SURVEY
FOR
RAYMOND D. BRAUN
EARL J. BRAUN
IN GOVT. LOT 2, SW-NE, SEC. 29, T.37N., R.8E.
ONEIDA COUNTY, WISCONSIN.

RECEIVED & FILED # **A476**
Oneida County Surveyor's Office
Date **JUL 03 1980**
By *[Signature]*
OCS Area #



A476

DATED: - 10-4-'72

Sy. M. Pospisil

WIS. S-140

A476