

RECEIVED & FILED #A 4 8 8
 Oneida County Surveyor's Office
 Date Jul. 10. 1988
 By M.R.
 OCS Area #

1423

SECTION 4
9

TOWN ROAD

BLACKTOP

SOLID STEEL STAKE

PRIVATE ROAD

PRIVATE ROAD

PRIVATE ROAD

PRIVATE ROAD

PRIVATE ROAD

PRIVATE ROAD

PRIVATE ROAD

N. 87° 46' E. 112.7'

S. 87° 45' W. 142.3'

S. 76° 34' W. 168.5'

N. 5° 42' E. 151.8'

N. 89° 30' E. 126.3'

N. 89° 30' E. 126.3'

154.4'

50° 31' W. 275.0'

DESC. 1-17-70

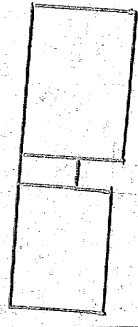
DESC. 10-21-61

N. 10° 23' W. 275.0'

S. 51° 35' E. 189.1'

N. 87° 51' E. 152.4'

N. 89° 40' E. 177.2'



5-10-66

S. 89° 55' E. 161.4'

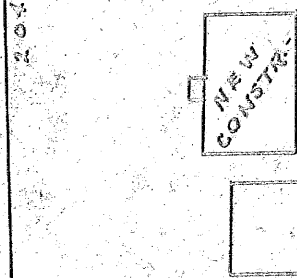
DESC. 12-6-60

N. 89° 52' W. 154.1'

RESERVED FOR ROAD

S. 89° 52' E. 163.6'

N. 0° 04' E. 270.0'



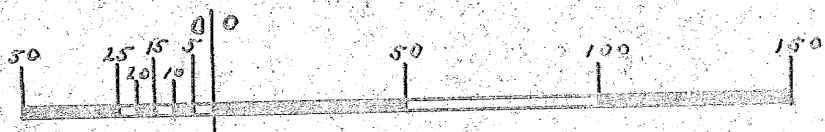
DESC. 3-17-70

S. 0° 31' W. 396.0'

N. 89° 51' W. 162.0'

SURVEY FOR JOHN OHLSON

IN NE 1/4 - NW 1/4; SECTION 9, T. 36 N., R. 9 E., ONEIDA COUNTY, WISCONSIN.



Scale 1" = 50'

○ IRON PIPE
 ○ H.L. HALVERSON

DATED 12-5-'63 REVISED 3-17-'70

By M. Poshig
 WIS 5-140