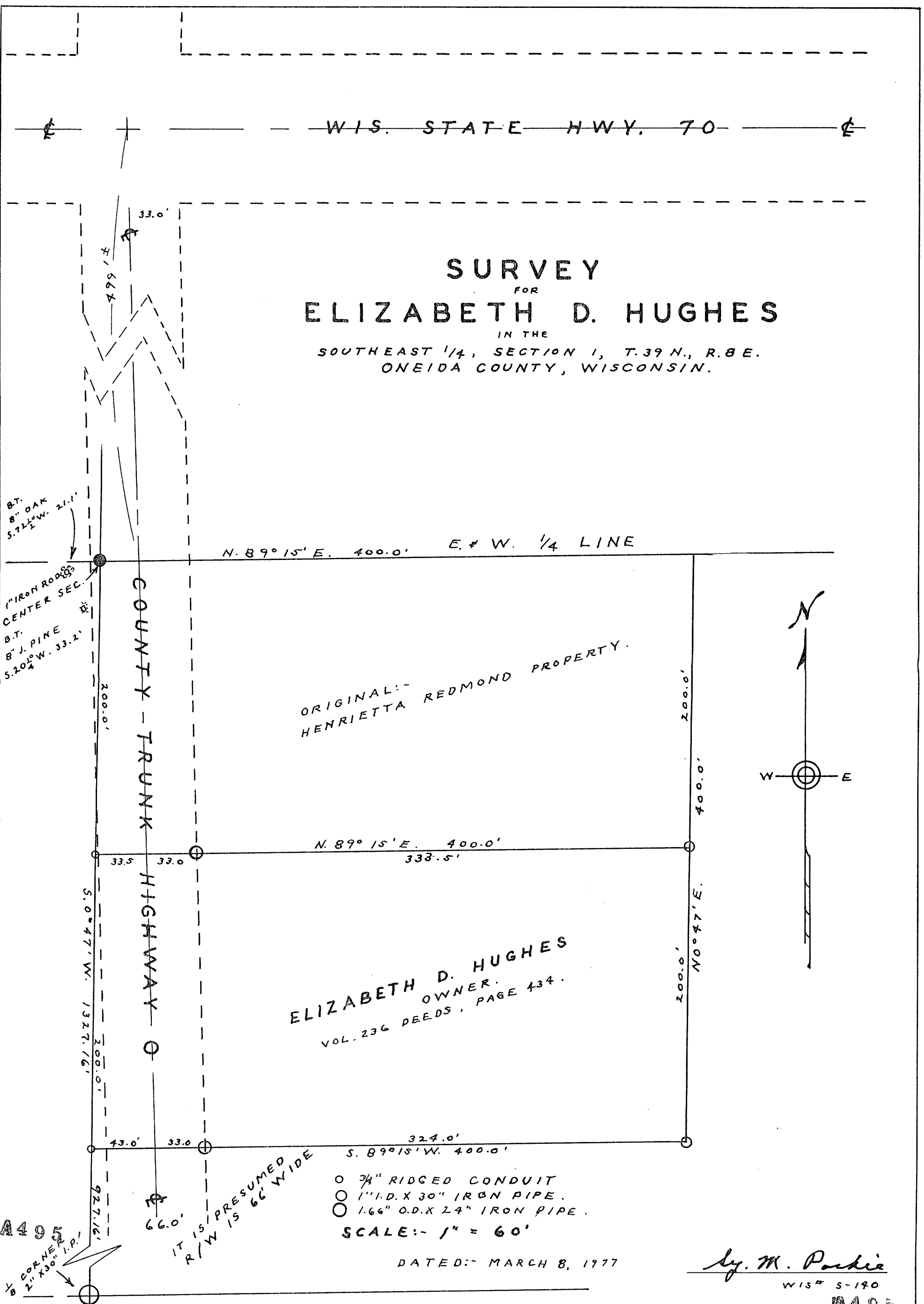


RECEIVED & FILED # **A495**
 Oneida County Surveyor's Office
 Date **JUL 25 1980**
 By *SP*
 DCS Area #.....

SURVEY
 FOR
ELIZABETH D. HUGHES
 IN THE
 SOUTHEAST 1/4, SECTION 1, T.39 N., R.8 E.
 ONEIDA COUNTY, WISCONSIN.



By M. Pordie
 WIS 5-190