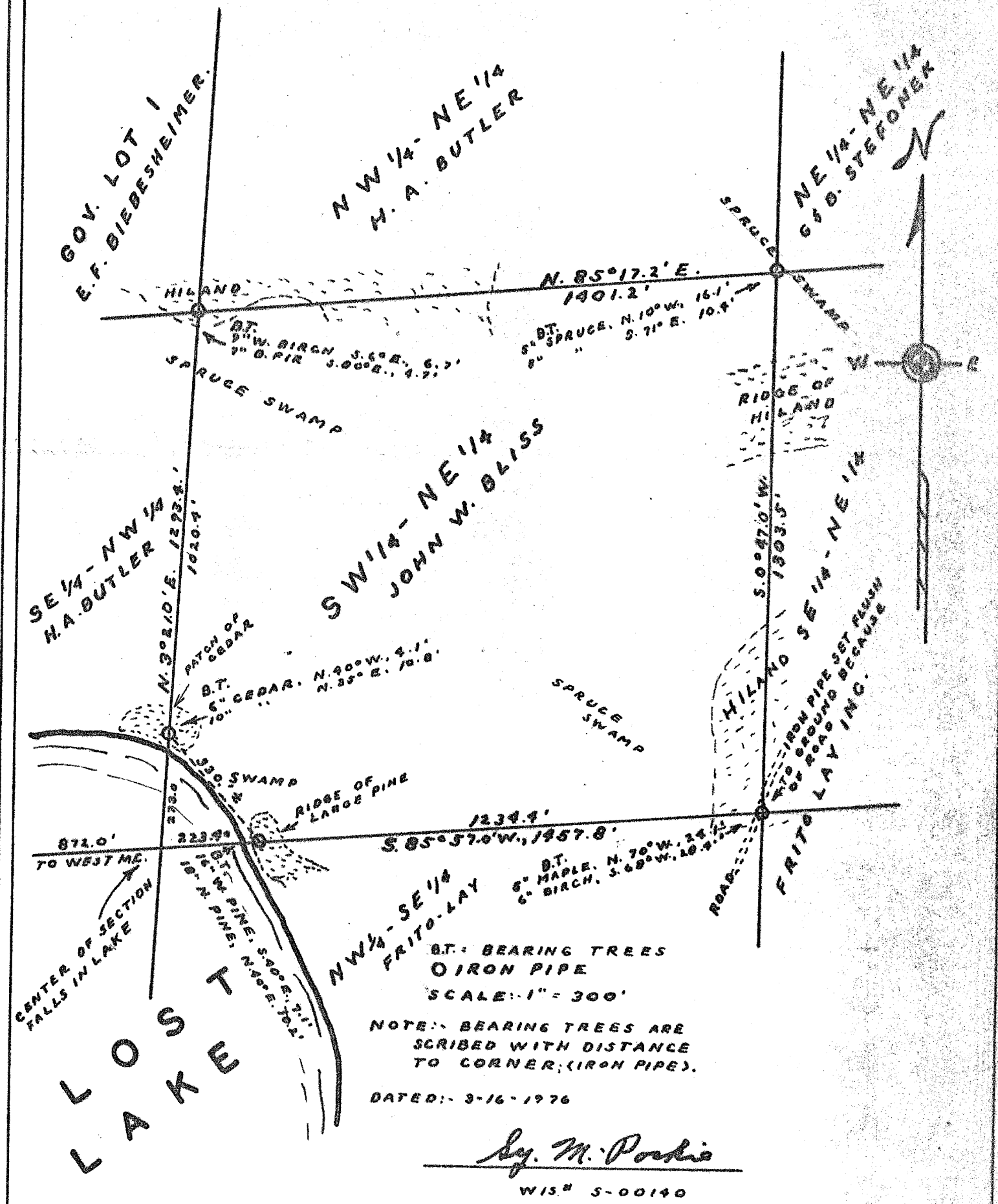


RECEIVED & FILED # **A499**
 Oneida County Surveyor's Office
 Date **JUL 25 1980**
 By *JP*
 OCS Area #

SURVEY
 FOR
JOHN W. BLISS

OF
 THE SW 1/4 - NE 1/4, SEC. 30, T.30 N., R.9 E.,
 ONEIDA COUNTY, WISCONSIN.



NOTE: BEARING TREES ARE
 SCRIBED WITH DISTANCE
 TO CORNER; (IRON PIPE).

DATED: 3-16-1976

By M. Pochie
 WIS 5-00140