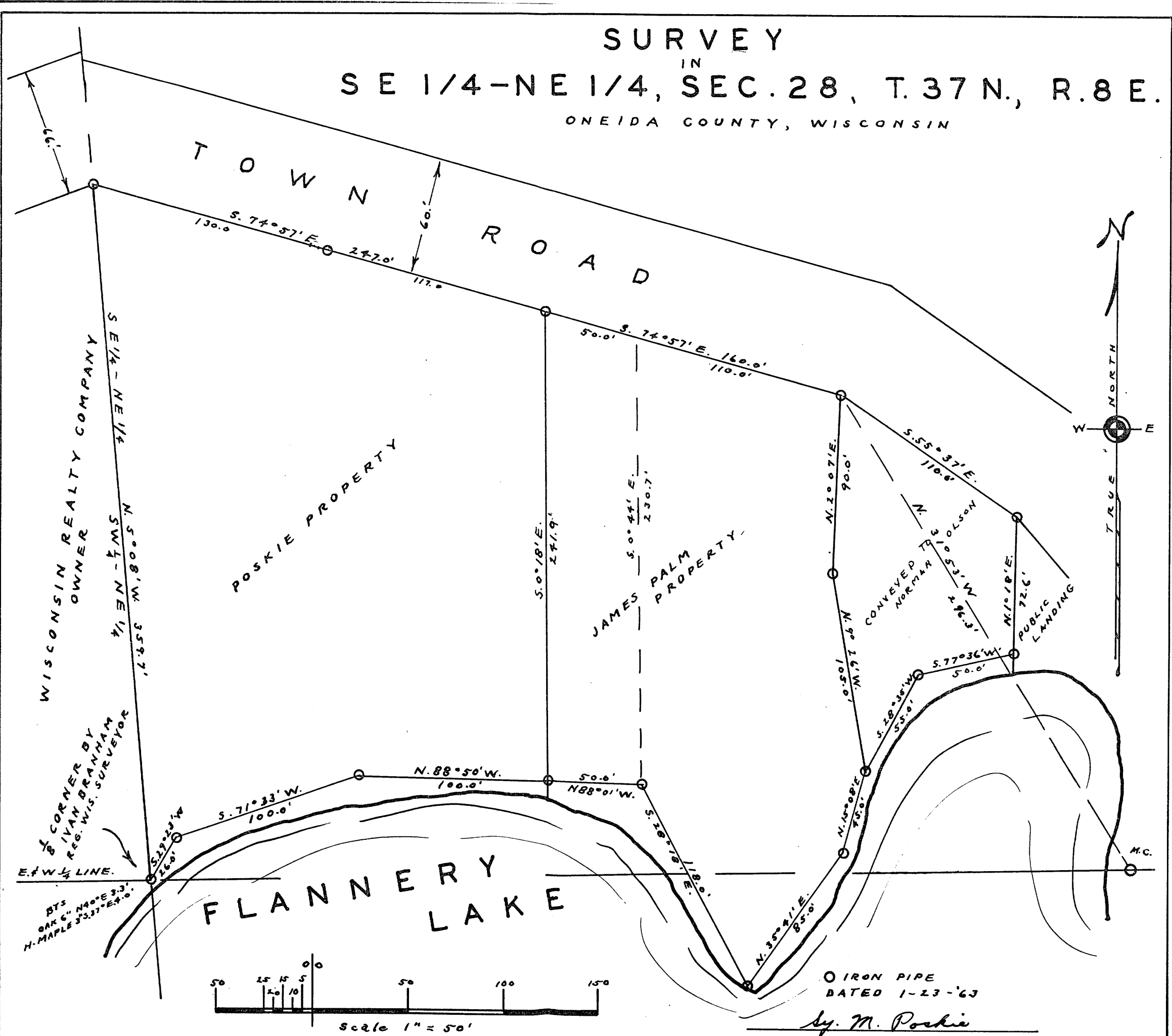


SURVEY  
IN  
SE 1/4-NE 1/4, SEC. 28, T. 37 N., R. 8 E.  
ONEIDA COUNTY, WISCONSIN



RECEIVED & FILED #A500  
 Oneida County Surveyor's Office  
 Date JUL 25 1989  
 By: [Signature]  
 OCS Area #:

A500

A500

A500