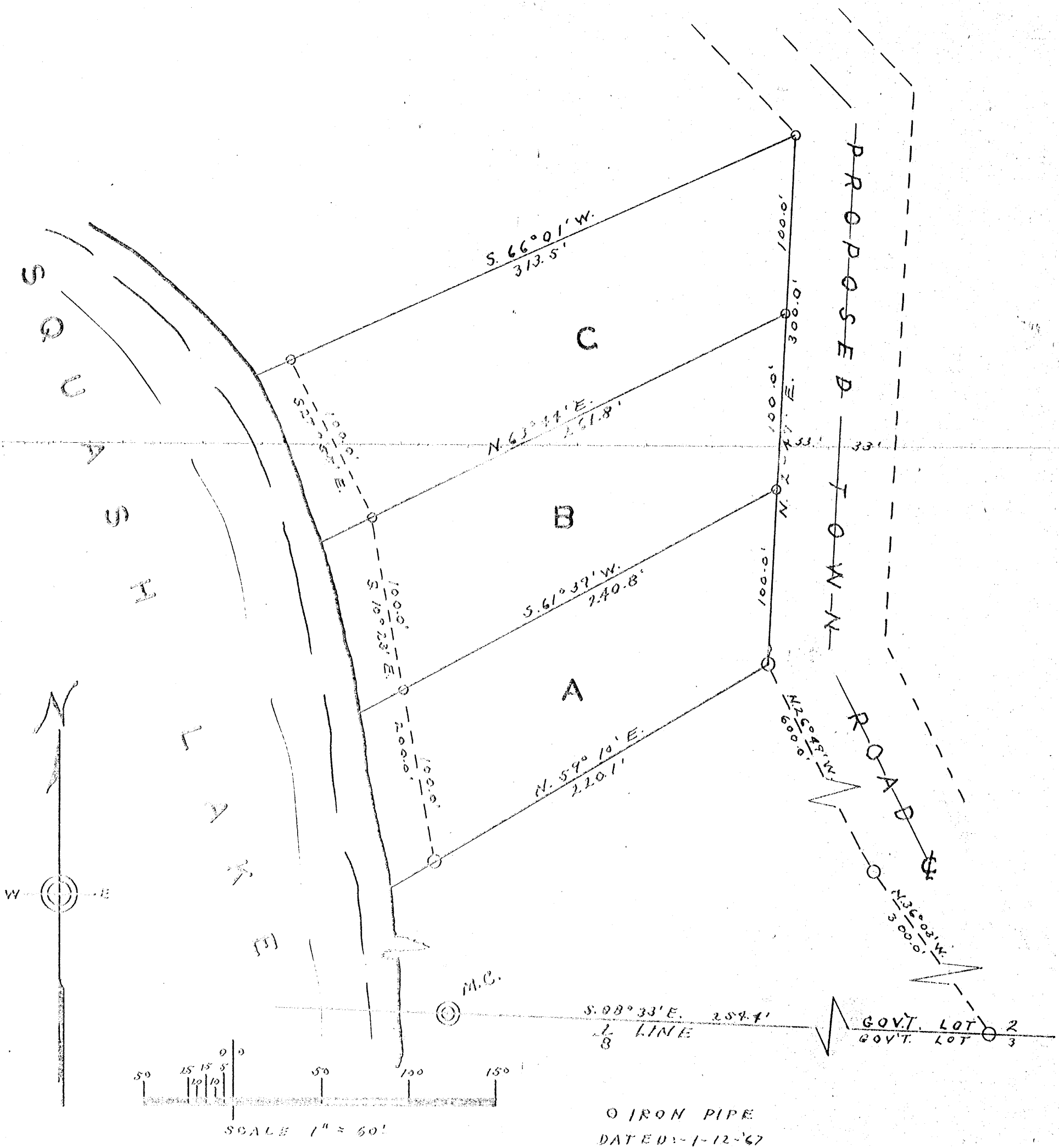


RECEIVED & FILED #.....  
 Oneida County Surveyor's Office  
 Date..... **JUL 25 1988**.....  
 By..... *K.P.*.....  
 OCS Area #.....

**SURVEY**  
 FOR  
**NORMAN A. OLSON**  
 &  
**JAMES H. HARKINS**

IN  
 GOV'T. LOT 2, SEC. 19, T. 36 N., R. 8 E.  
 ONEIDA COUNTY, WISCONSIN.



*By M. Pankia*  
 WIS 9 S-130