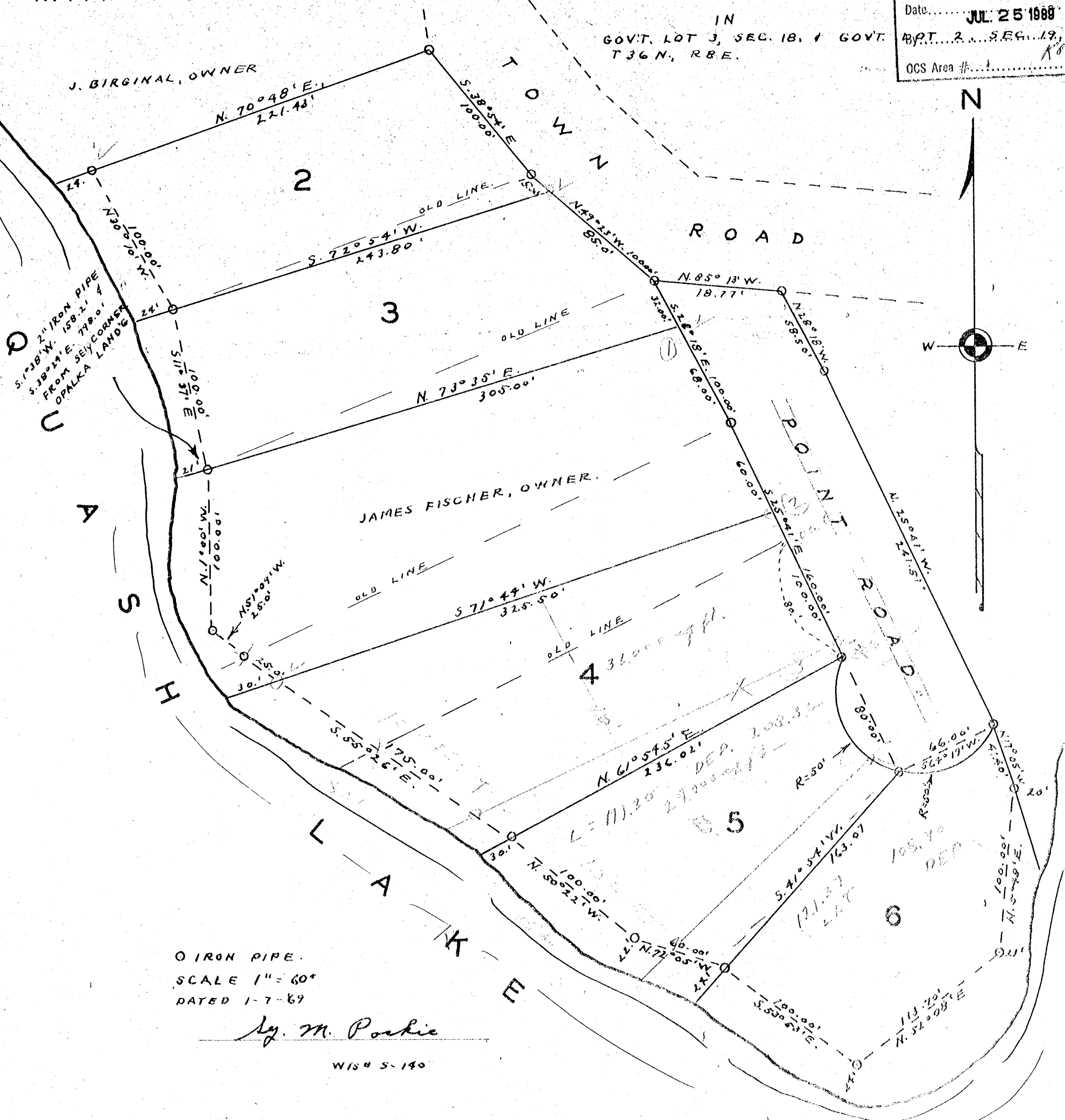


MAP FOR CHANGES IN OPALKA PLAT

RECEIVED & FILED #.....
 Onondaga County Surveyor's Office
 Date..... **JUL 25 1988**
 B.P.T. 2... SEC. 19,
 OCS Area #.....

IN
 GOVT. LOT 3, SEC. 18, T 36 N, R 8 E.



2 1/2" IRON PIPE
 S. 73° 21' E. 158.21'
 FROM S.E. CORNER
 OPALKA LAND

JAMES FISCHER, OWNER.

○ IRON PIPE.
 SCALE 1" = 60'
 DATED 1-7-69

M. Pochie

WIS 5-140