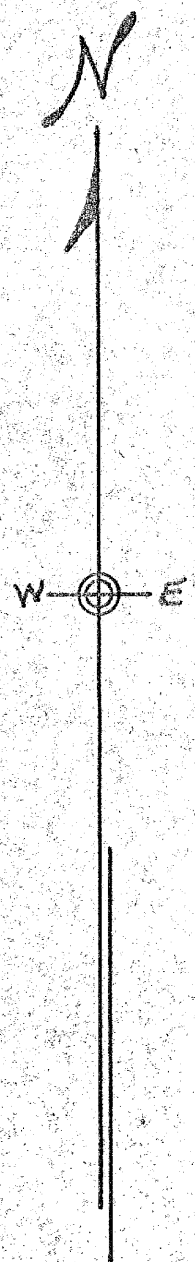
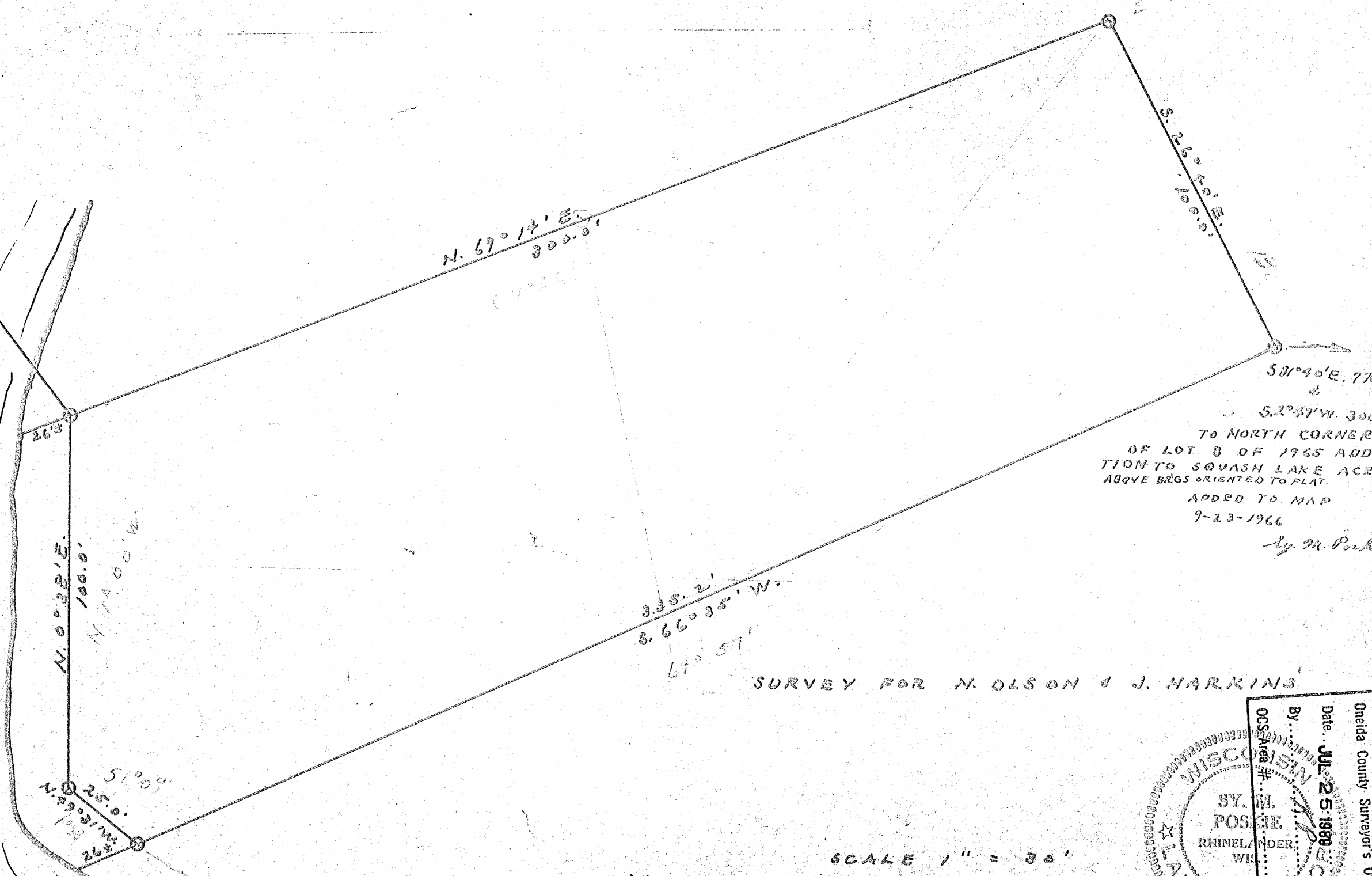
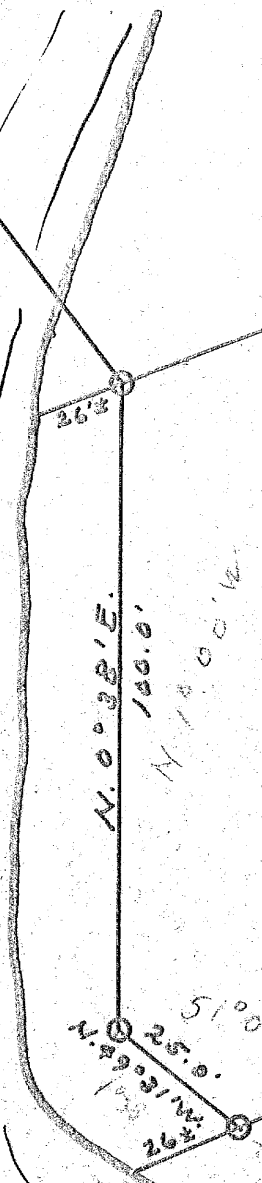
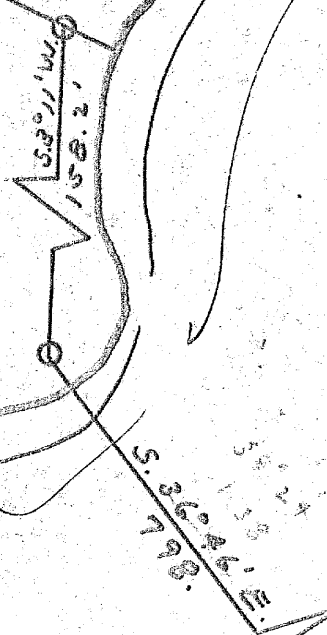


PART OF GOV'T. LOT 2, SEC. 19,
T. 36 N., R. 0 E.



SQUASH LAKE

OPALKA
LANDING



S. 2° 47' W. 300'
TO NORTH CORNER
OF LOT 8 OF 1965 ADDI-
TION TO SQUASH LAKE ACRES
ABOVE BRGS ORIENTED TO PLAT.
ADDED TO MAP
9-23-1966
By M. Posie

SURVEY FOR N. OLSON & J. HARKINS

SCALE 1" = 30'

RECEIVED & FILED IN THE OFFICE OF THE
Onida County Surveyor's Office
Date: JUL 25 1980
By: [Signature]
OCSEA # [Number]
WISCONSIN
SY. M. POSIE
RHINELANDER, WIS.