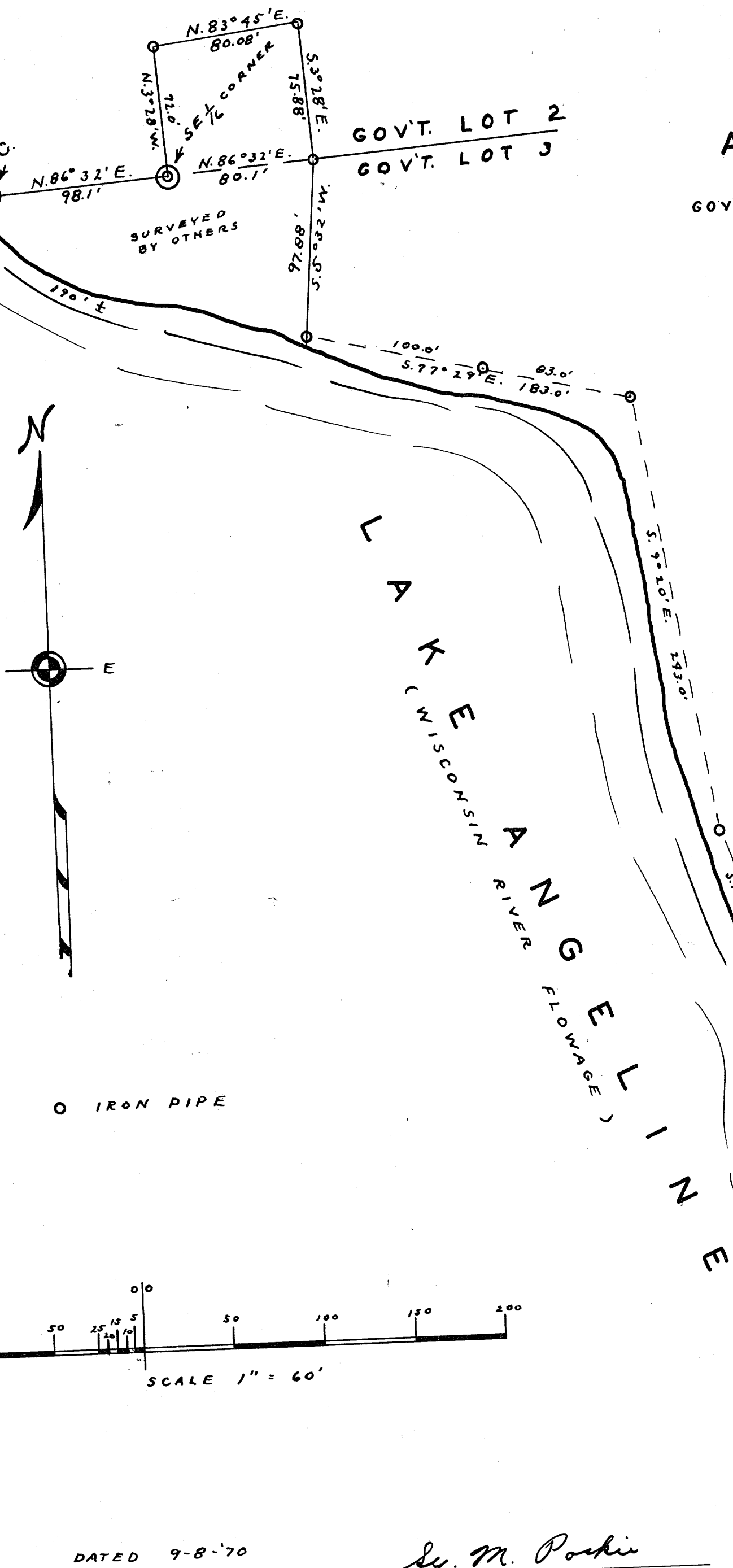


RECEIVED & FILED #517.
 Oneida County Surveyor's Office
 Date: JUL 25 1989
 By: KP
 OCS Area #.....

SURVEY
 FOR
 ADAM NETZER

IN
 GOV'T. LOT 3, SECTION 25, T. 37 N., R. 8
 ONEIDA COUNTY WISCONSIN.



DATED 9-8-'70

Sy. M. Poskie