

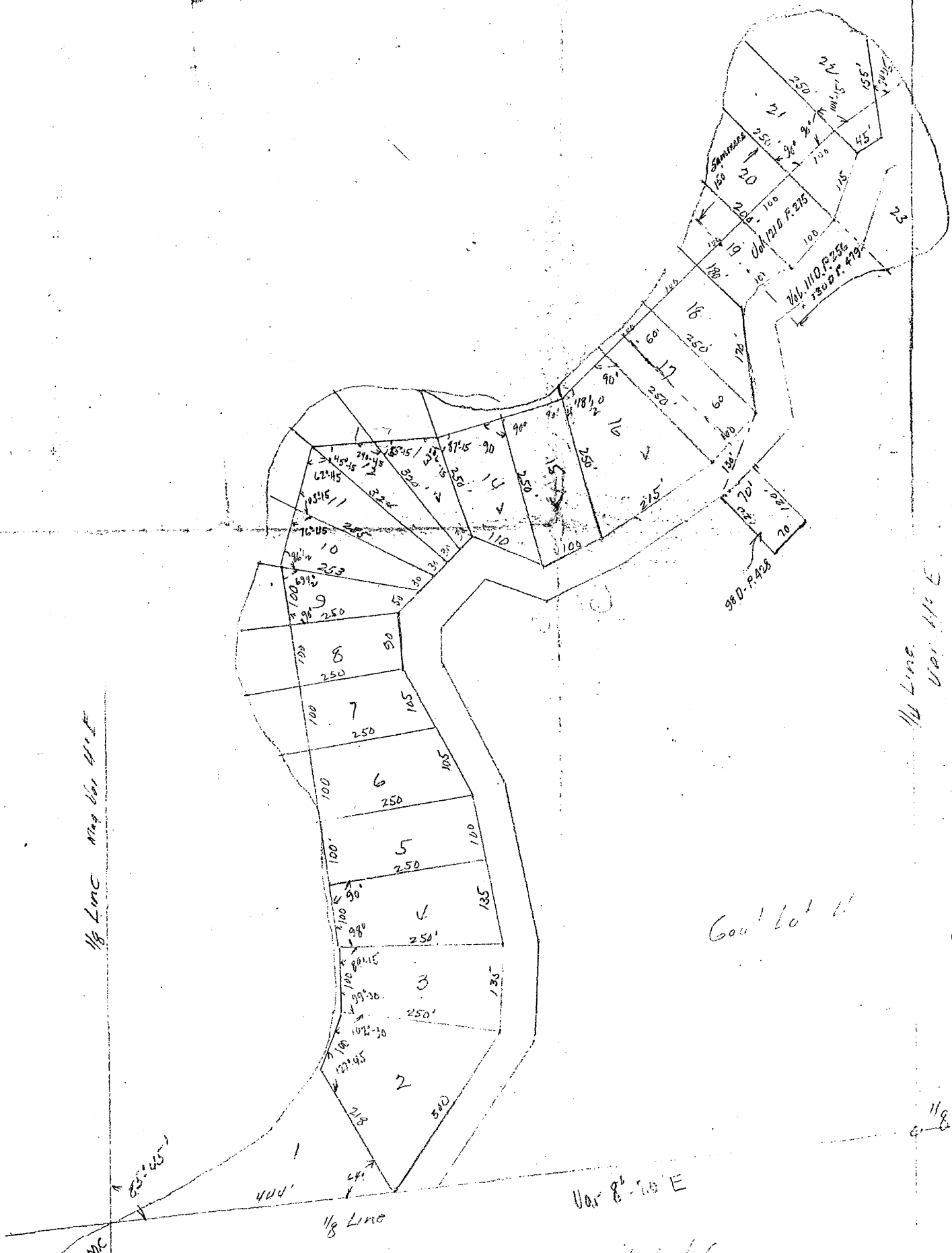
~~A521~~
A521

~~A521~~
A521

Howard's Point

D.H. Vaughan
6th of Jan 1913.

North
↑



600' Lot 11

600' Lot 3

Var 8 1/2 to E
600' Lot 6

Scale 1" = 200'

Lots 12, 13 & 14
 Wm. B. F. Zimmer,
 118 W. Ohio St.
 Chicago, Ill.
 Lot 16
 Mr. J. F. Chaddock
 Continental Nat. Bank
 Trust Co.
 Chicago, Ill.
 Lot 15
 Wm. S. Furry
 Ohio Injector Co. of
 53 W. Jackson

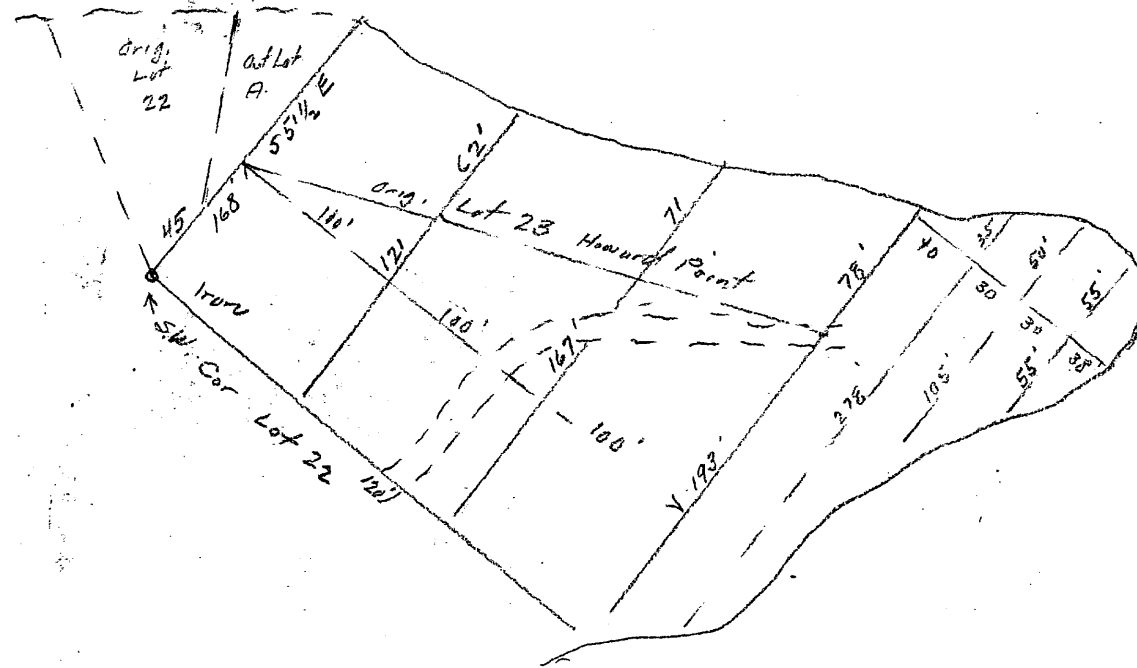
A521

RECEIVED & FILED # ~~A521~~
 Oneida County Surveyor's Office
 Date **AUG. 11 1989**
 By *K.P.*
 OCS Area #.....

A521

13-39-6 GL. 3 & 4

Resurvey Plot of Howard Point



Scale: 1"=100'

D. S. Burnett

7th of July 1925

A521