

A52

USIS P185
Distance should
be 660 feet to the beginning

Lines and stumps
on lots 11 + 13
lot 12 must be
found
JHW
9/12/89

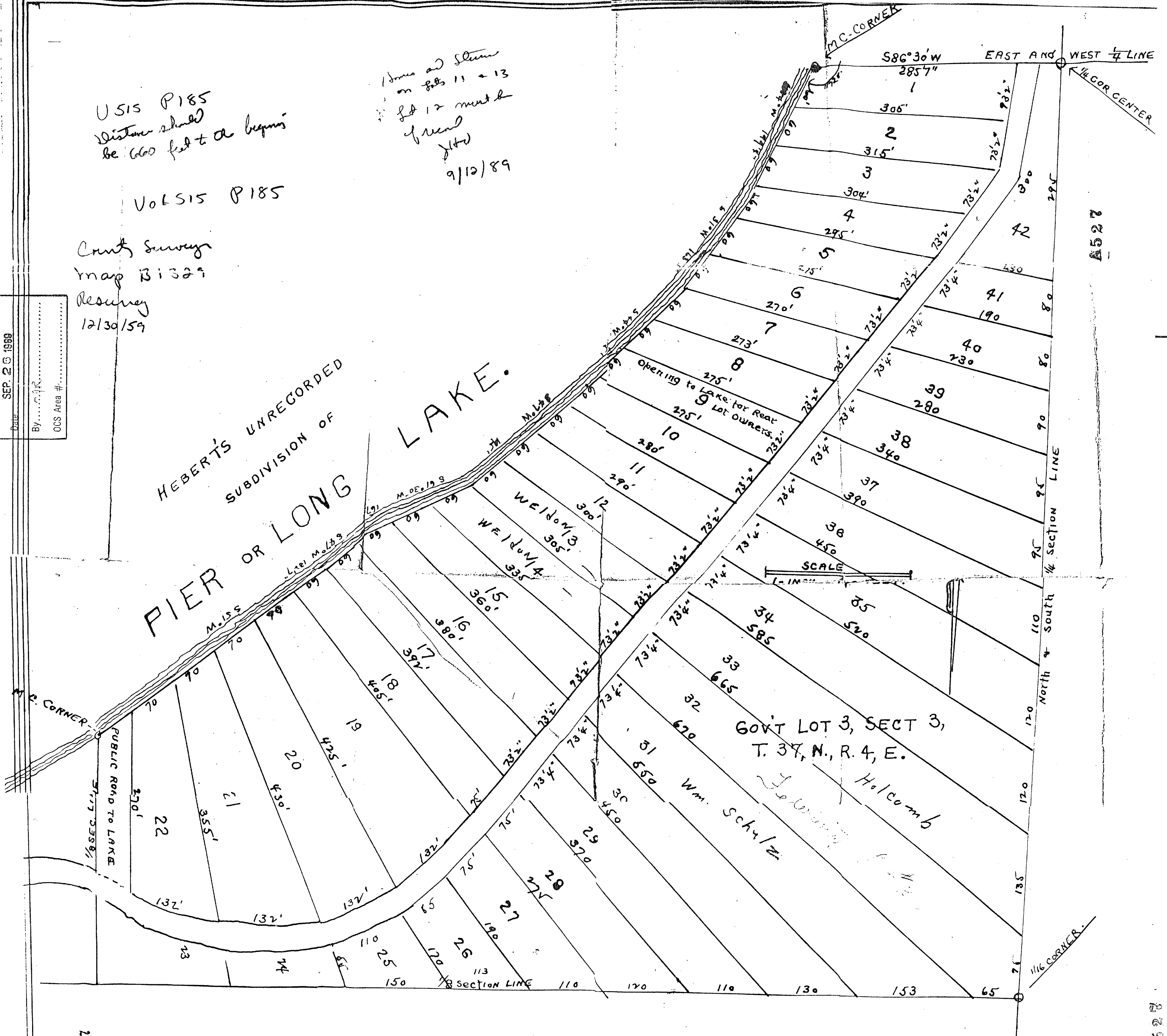
Vol 515 P185

County Surveyor
Map B1329
Resurvey
12/30/59

RECEIVED & FILED # A527
Oneida County Surveyor's Office
SEP. 23 1989
Date
By
OCS Area #

PIER OR LONG LAKE.

HEBERT'S UNRECORDED
SUBDIVISION OF



GOVT LOT 3, SECT 3,
T. 37, N., R. 4, E.

Wm. Schuyler
Halcomb

SCALE
1" = 100'

A527

TRACED BY F.P. WERNER.

A527