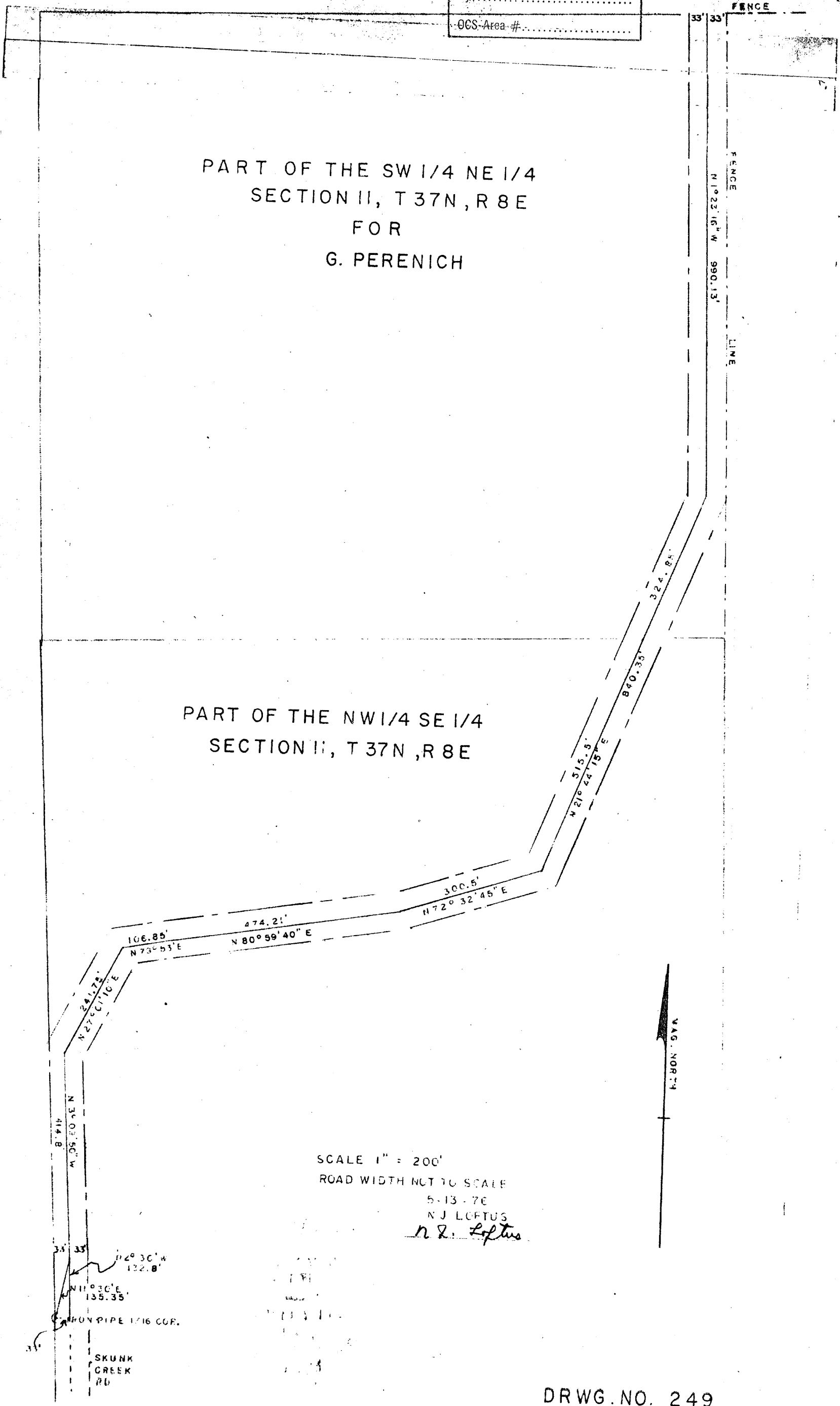


RECEIVED & FILED # A 529  
 Oneida County Surveyor's Office  
 Date NOV. 10 1888  
 By.....  
 OCS-Area #.....

PART OF THE SW 1/4 NE 1/4  
 SECTION II, T 37N, R 8E  
 FOR  
 G. PERENICH

PART OF THE NW 1/4 SE 1/4  
 SECTION II, T 37N, R 8E



SCALE 1" = 200'  
 ROAD WIDTH NOT TO SCALE  
 5-13-76  
 N.J. LOFTUS  
*N.J. Loftus*

35 33  
 N 2° 36' W  
 122.8'  
 N 11° 36' E  
 135.35'  
 IRON PIPE 1/16 CGR.  
 SKUNK  
 CREEK  
 RD

DRWG. NO. 249