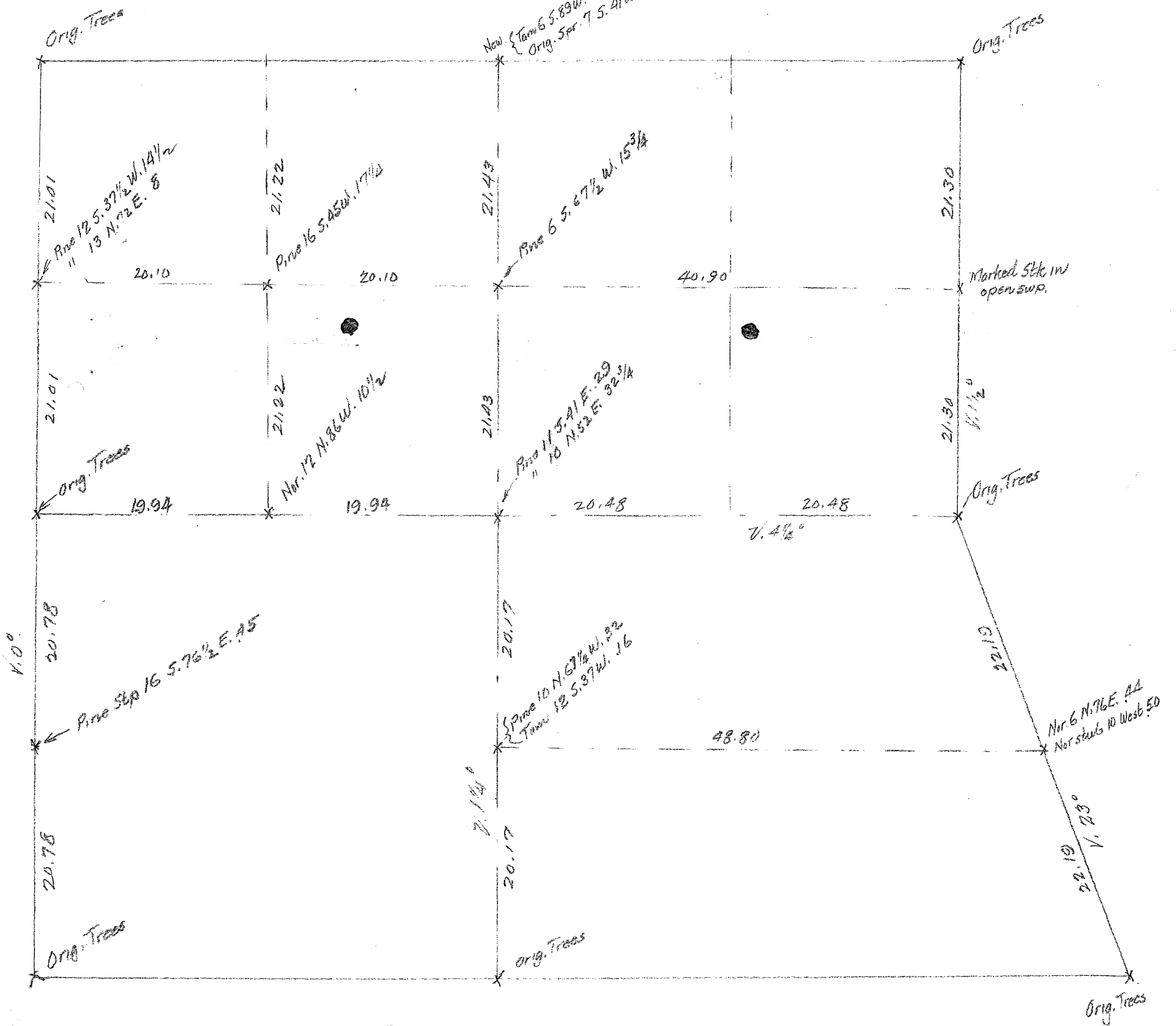


RECEIVED & FILED # A. 534.  
 Oneida County Surveyor's Office  
 Date: DEC. 22 1888  
 By: M. R.  
 OCS Area #

See Register of  
 Deed Plats  
 C 1 P 49 For  
 Original MAP  
 by Dorr

Sec. 4. 36-9 Vol 2 Plats P. 2.  
 B. F. Dorr Mar. 1897



60x137