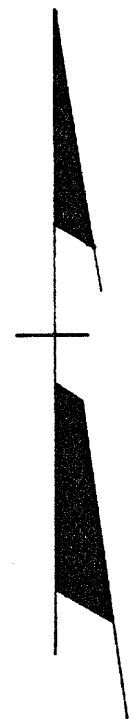


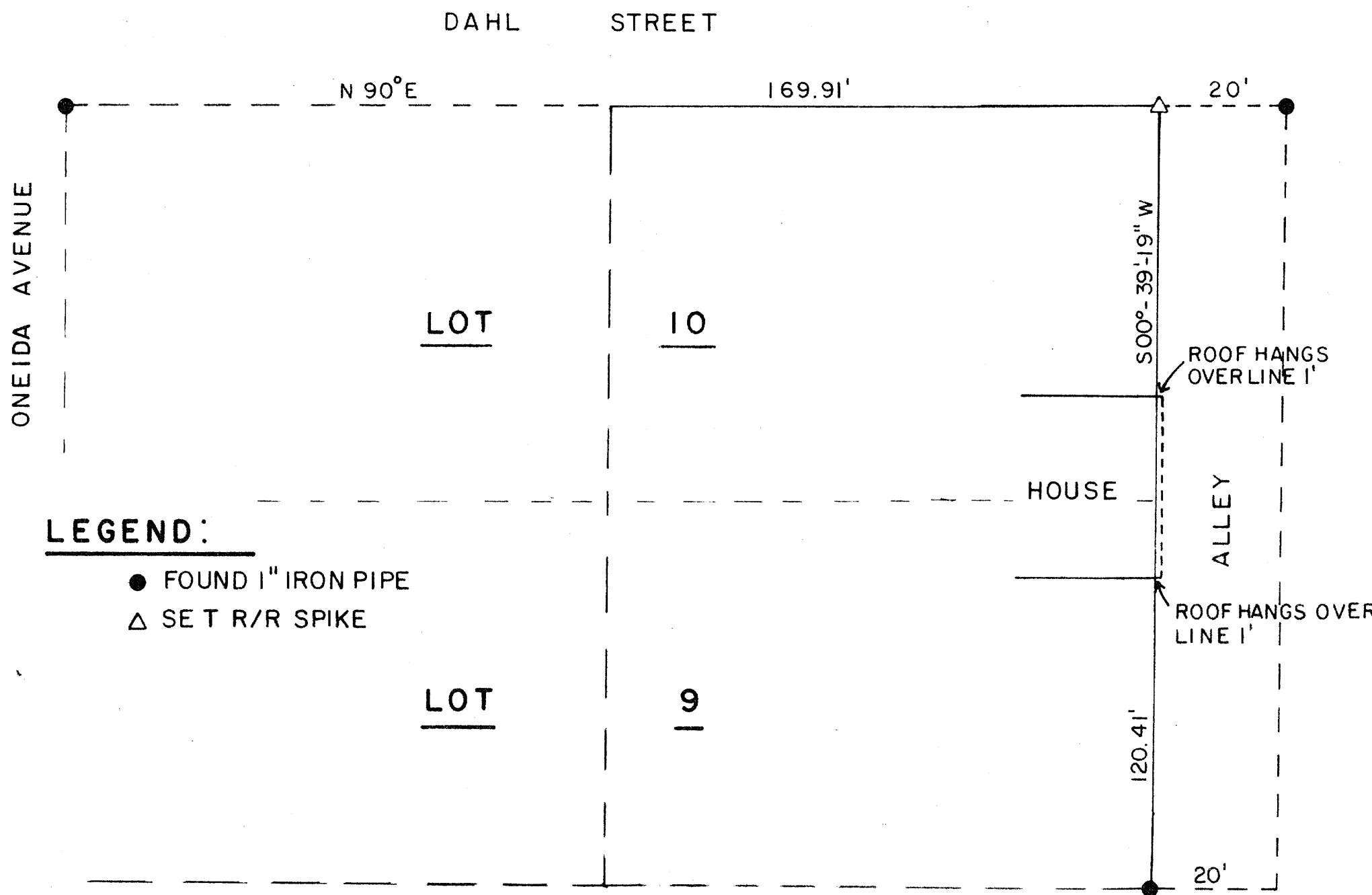
RECEIVED & FILED # 536
 Oneida County Surveyor's Office
 Date JAN 4 1990
 By [Signature]
 OCS Area #

PART OF LOTS 9 & 10, BLOCK 22,
 SECOND ADDITION TO THE CITY OF
 RHINELANDER, ONEIDA COUNTY, WI

N

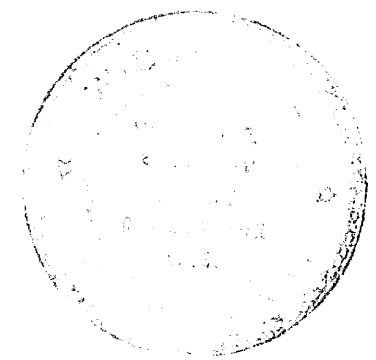


BEARINGS REFERENCED
 TO THE NORTHLINE OF
 BLOCK 22, 2ND ADDITION
 ASSUMED TO BEAR N 90 E



LEGEND:

- FOUND 1" IRON PIPE
- △ SET R/R SPIKE



I, WILLIAM W. SWOBODA, Surveyor, do hereby certify that I have surveyed the above parcel of land and that the plat of the same is a true and correct representation of the land surveyed and that the same is in accordance with the laws of the State of Wisconsin.

William W. Swoboda
 William W. Swoboda Date

STATEWIDE REALTY - SWOBODA		
SCALE: 1" = 20'	APPROVED BY:	DRAWN BY R.B.
DATE: 11/22/89		REVISED