



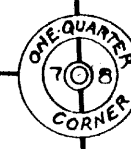
22' W. Pine
381° W, 125.7'

N 86°-08' W
2955.3'

N 86°-08' W
250.0'

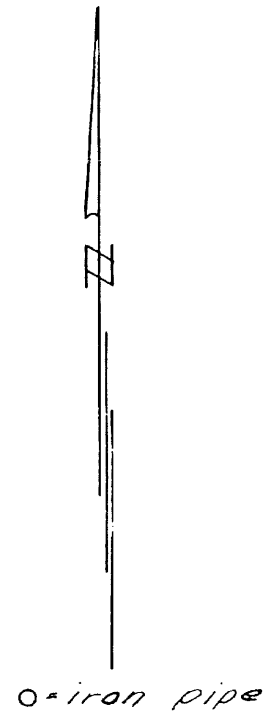
N 86°-08' W
2527.2'

7" Tamarack
N 25° E, G.P.A.



RECEIVED & FILED #. A538
Oneida County Surveyor's Office
Date FEB. 2 1967
By M.R.
OCS Area #

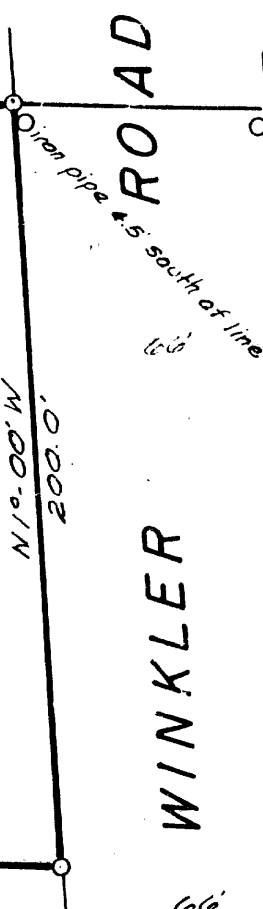
True Bearings



S 1°-00' E
200.0'

N 1°-00' W
200.0'

S 86°-08' E
250.0'



Part of
NE 1/4 of the SW 1/4
SECTION 7, T38N, R11E
Oneida County, Wis.

Scale 1" = 50'
February, 1967

Northwoods Surveyors

Land Surveyor

J. Fisher

11-7-3811

A 538

11-7-3811