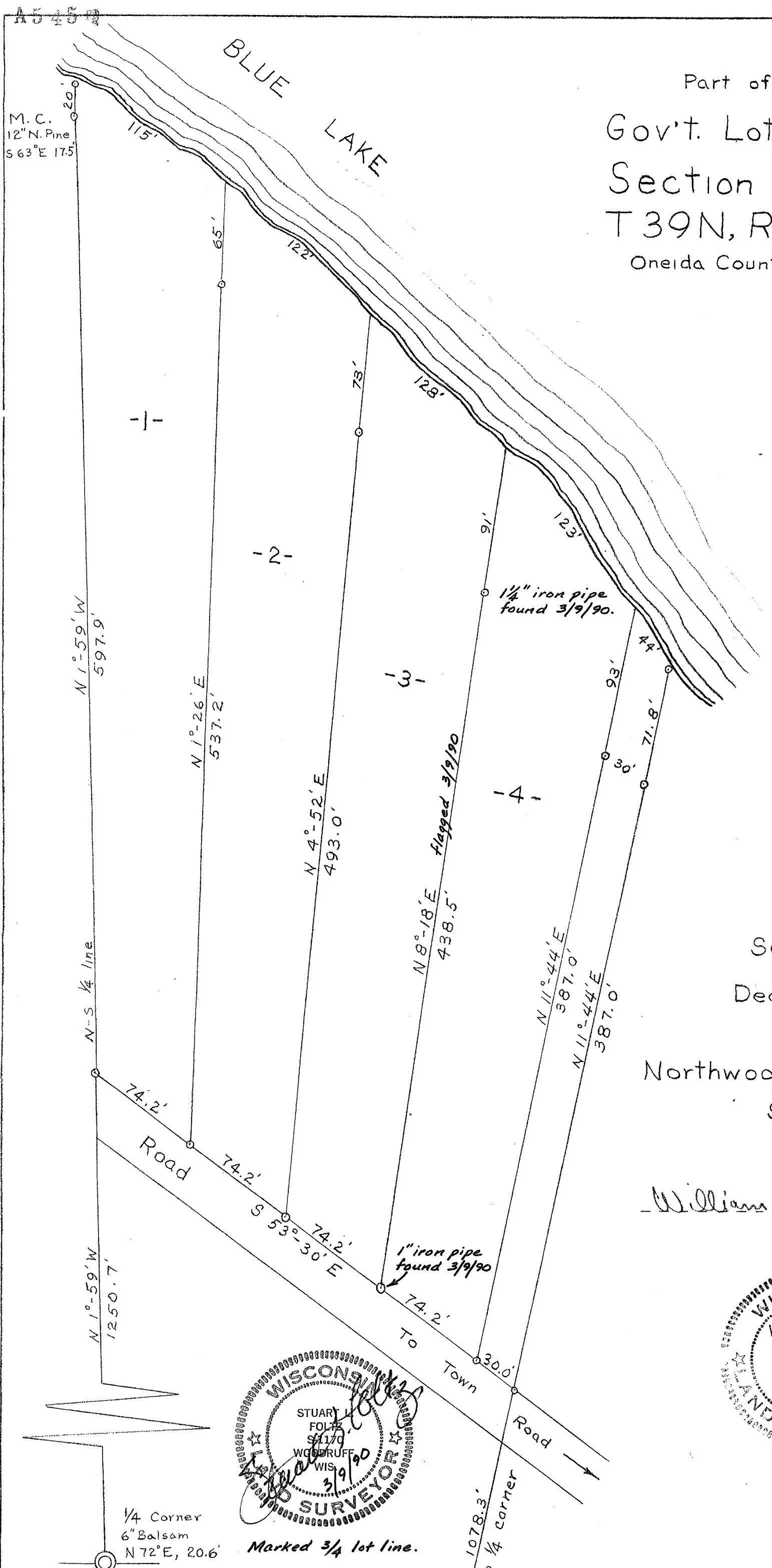


RECEIVED & FILED #  
 Oneida County Surveyor's Office  
 Date: APR. 12 1900  
 By: myR  
 OCS Area # A545.7

Part of  
 Gov't. Lot 5  
 Section 29  
 T39N, R6E  
 Oneida County, Wis.

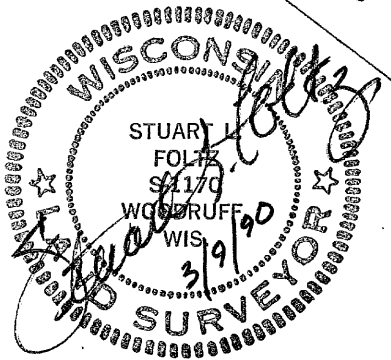


Iron pipe at all corners

Scale: 1" = 60'  
 December, 1958

Northwoods  
 Surveyors

*William J. Cameron*  
 reg. surveyor



1/4 Corner  
 6" Balsam  
 N 72° E, 20.6'

Marked 3/4 lot line.

A545

J. Griffin