

ACRES

bearings magnetic

RECEIVED & FILED #.....
 Oneida County Surveyor's Office
 Date **APR 12 1990**
 By *myf*
 OCS Area #... **A546**

1/8 Corner (by others)
16" Oak N3°E 44.1'

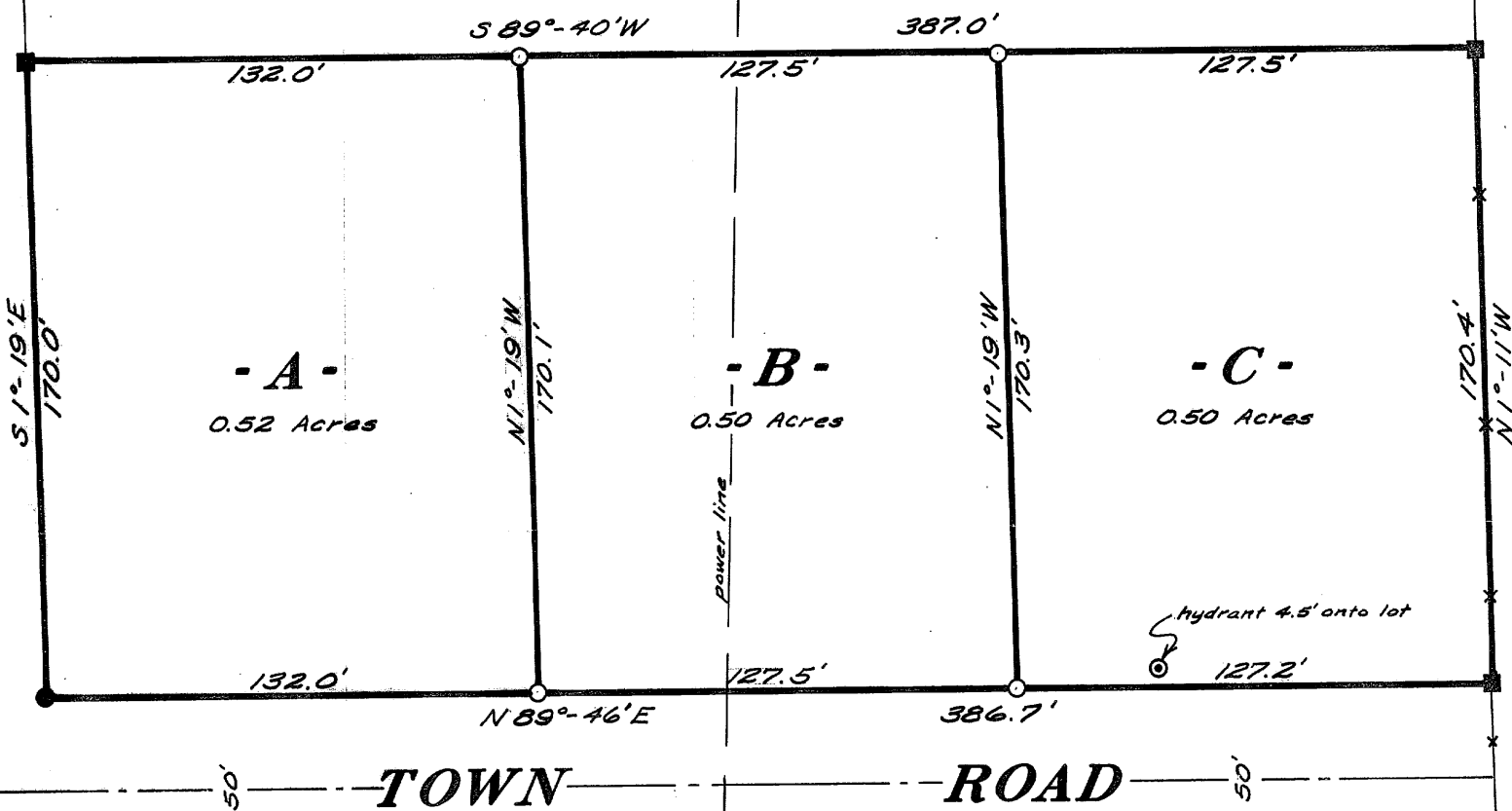
50'

ROAD

50'

TOWN

50'



732.1'
50°-36'E
old fence line

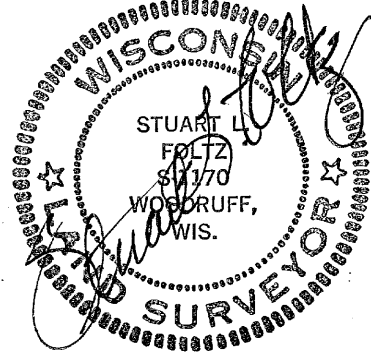
hydrant 4.5' onto lot
127.2'

Part of the

**NW 1/4 of the NE 1/4
SECTION II, T39N, R6E**

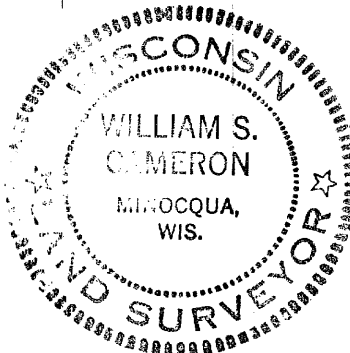
Oneida County, Wis.

3/17/90 Recovered corners
flagged lines of Lot "C";
SW corner not found.



Scale 1" = 50'

December, 1972
REVISED: March, 1973



Northwoods Surveyors Inc.

William S. Cameron
Land Surveyor

A546
Stu Foltz