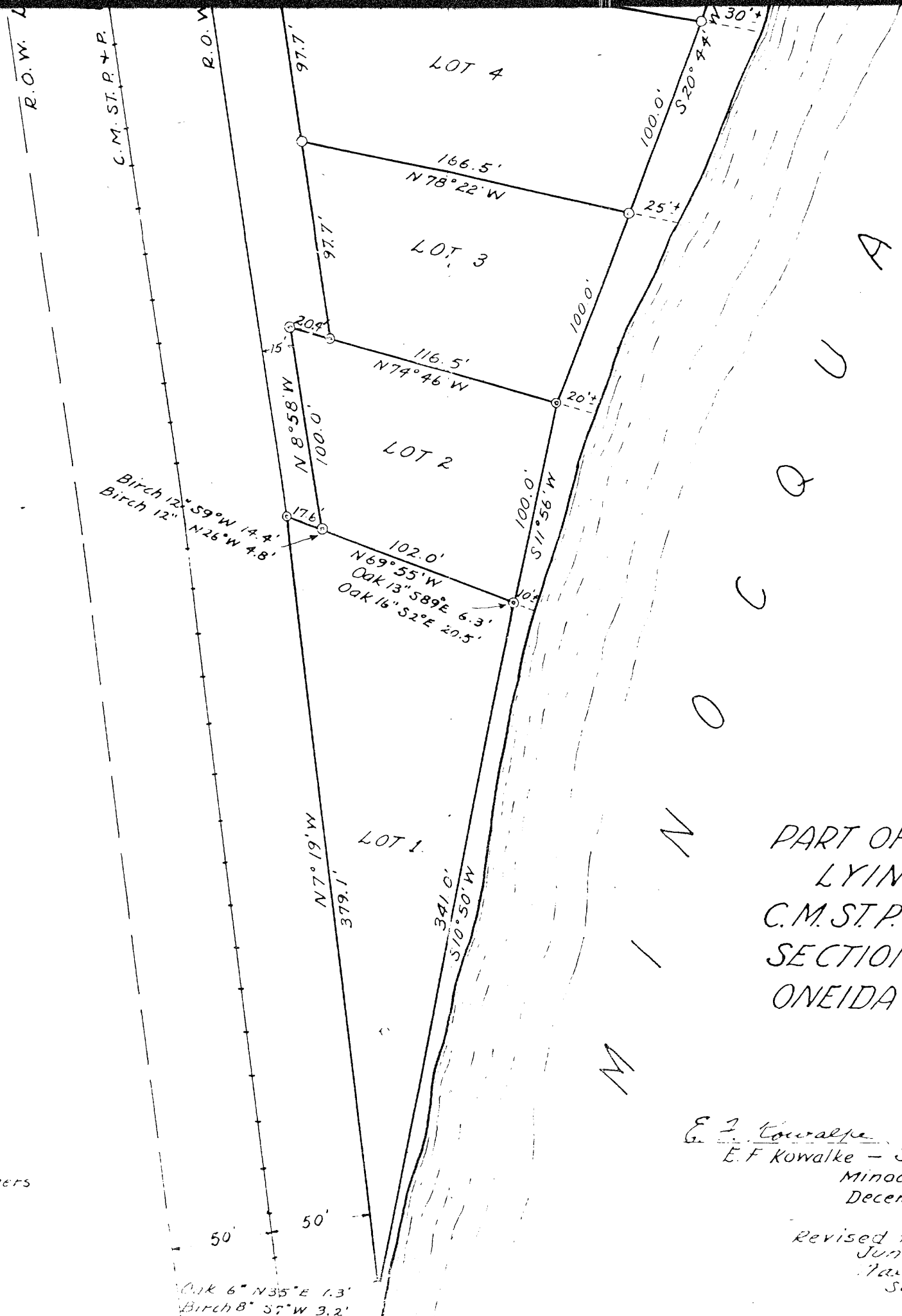




Scale - 1" = 60'

Note -
© Iron Pipe set at corners



PART OF GOV'T LOT 6
 LYING EAST OF
 C.M. ST. P. & P. RY. CO. R.O.W.
 SECTION 11, T.39N-R6E.
 ONEIDA COUNTY, WIS.

E. F. Kowalke W. A. Hennig
 E. F. Kowalke - Surveyors - W.A. Hennig
 Minocqua, Wisconsin
 December 10, 1946

Revised to include lot A
 June 3, 1948
Walter A. Hennig
 Surveyor

RECEIVED & FILED # **A547**
 Oneida County Surveyor's Office
 Date: **APR 12 1990**
 By: myk
 OCS Area # **A547**

N

R.O.W. Line

C.M. ST. P. & F. RY.

R.O.W. Line

ROAD

N 8° 58' W
232.1'

34.9'

Maple 5° N 27° E 9.9'
Oak 12° S 81° E 48.8'

33.6'

S 8° 58' E
483.9'

97.7'

317.8'
S 82° 19' E

N. Pine 18° N 11° E 15.3'
Oak 8° S 51° W 18.6'

17'

LOT 6

100.0'

267.3'
N 81° 29' W

30'±

LOT 5

100.0'

216.7'
N 80° 17' W

30'±

LOT 4

100.0'

97.7'

97.7'

97.7'

166.5'
N 78° 22' W

25'±

LOT 3

100.0'

20.9'

100.0'

116.5'
N 74° 46' W

20'±

LOT 2

100.0'

Birch 12° S 59° W 14.4'
Birch 12° N 26° W 4.8'

17.6'

102.0'
N 69° 55' W

QUA

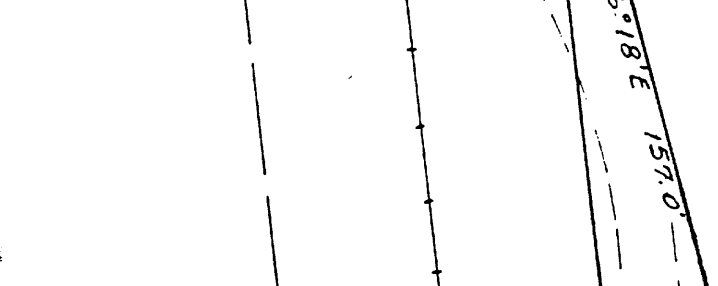
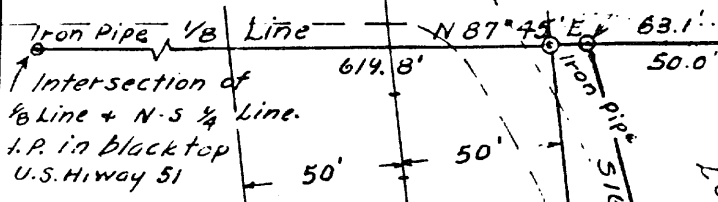
L A K

30-10-28

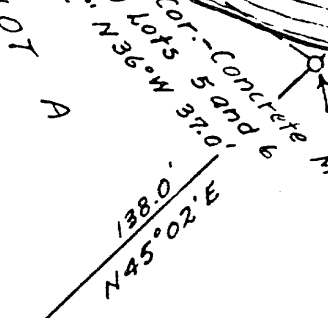
GOV'T LOT 5

Iron Pipe
Birch 3" N34°E 20'

Iron Pipe 1/8" Line
Intersection of
1/8" Line + N-S 1/4 Line.
I.P. in blacktop
U.S. Highway 51



Remainder Cor. - Concrete Mon.
Between Lots 5 and 6
Oak 12" N36°W 37.0'



Iron Pipe
Birch 6" N63°W 9.5'

Iron Pipe
Oak 12" S37°E 2.4'

S 8°58'E
379.4'

N 8°58'W
232.1'

RESERVED
BY
W. YELTON JR.

Maple 5" N27°E 9.9'
Oak 12" S81°E 48.8'

34.9'
33.6'

317.8'
S82°19'E

N. Pine 18" N11°E 15.3'
Oak 8" S51°W 18.6'

LOT 6

S 8°58'E
483.9'

97.7'

207.3'
N 51°29'W

100.0'

LOT 5

OAD
18" W.

97.7'

100.0'

L A K E

