

PART OF LOTS 9 & 10, BLOCK 22,
SECOND ADDITION TO THE CITY OF
RHINELANDER, ONEIDA COUNTY, WI

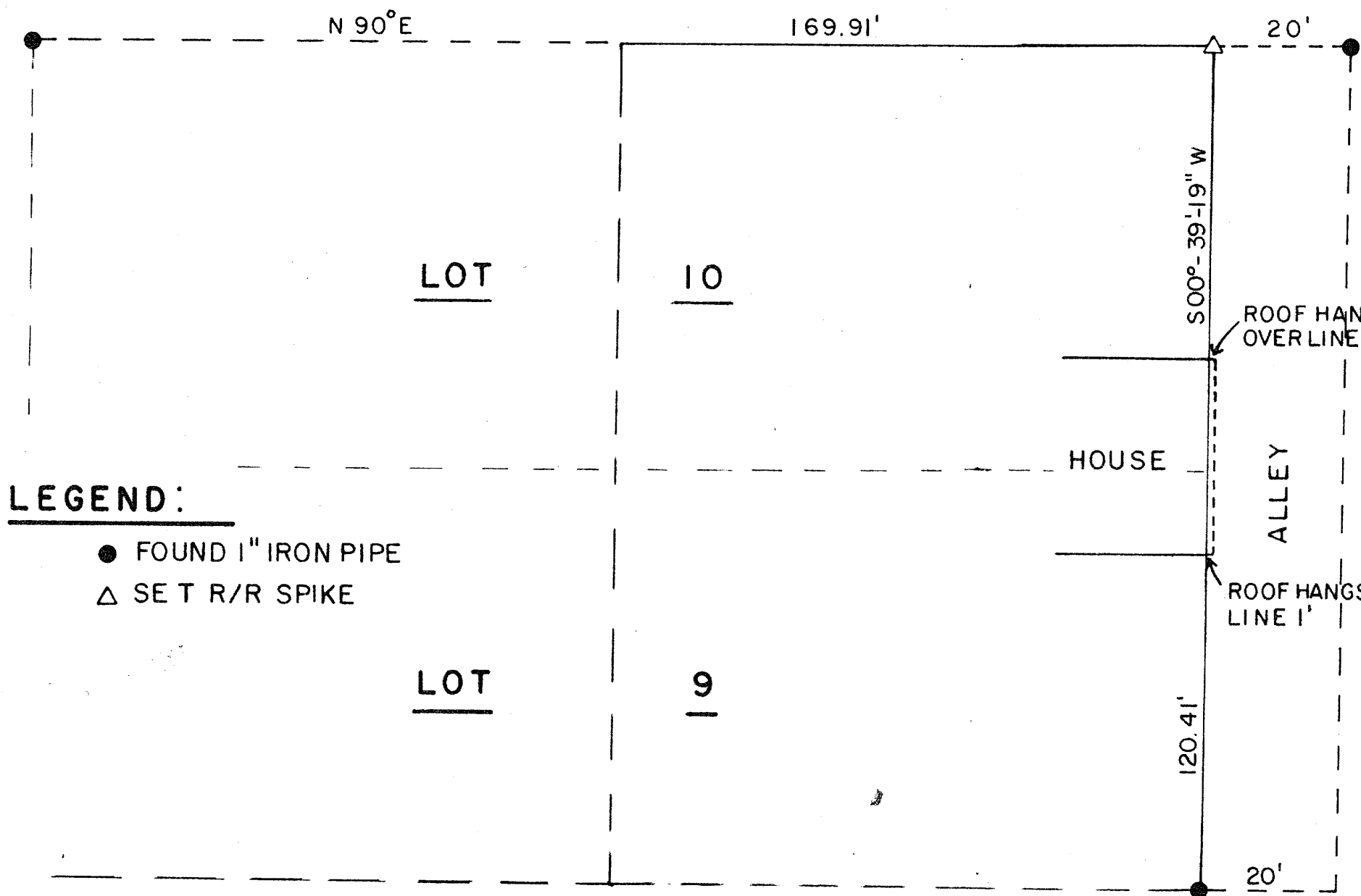
N

BEARINGS REFERENCED
TO THE NORTH LINE OF
BLOCK 22, 2ND ADDITION
ASSUMED TO BEAR N 90° E

RECEIVED & FILED # **A 550**
Oneida County Surveyor's Office
Date **MAY 24 1890**
By *[Signature]*
OCS Area #

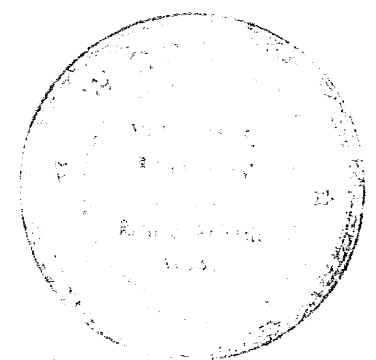
ONEIDA AVENUE

DAHL STREET



LEGEND:

- FOUND 1" IRON PIPE
- △ SET R/R SPIKE



I, *[Signature]*, Surveyor, do hereby certify that I have surveyed the above parcel of land under the direction of the Board of Supervisors and that the above map is a true and correct representation of the land as surveyed to the best of my knowledge and belief. Witness my hand and the seal of my office this 22nd day of May, 1890.

[Signature]
William G. Brown, Det.

STATEWIDE REALTY - SWOBODA		
SCALE 1" = 20'	APPROVED BY:	DRAWN BY R.B.
DATE: 11/22/89		REVISED