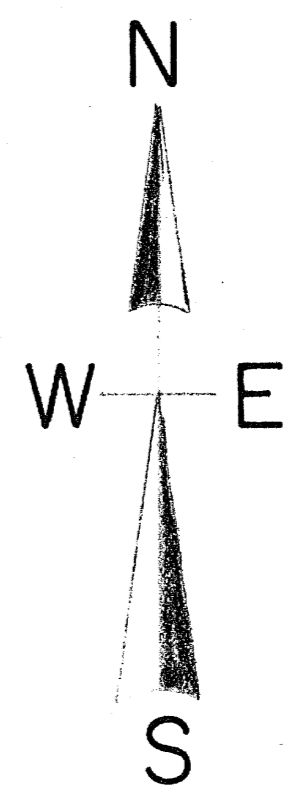
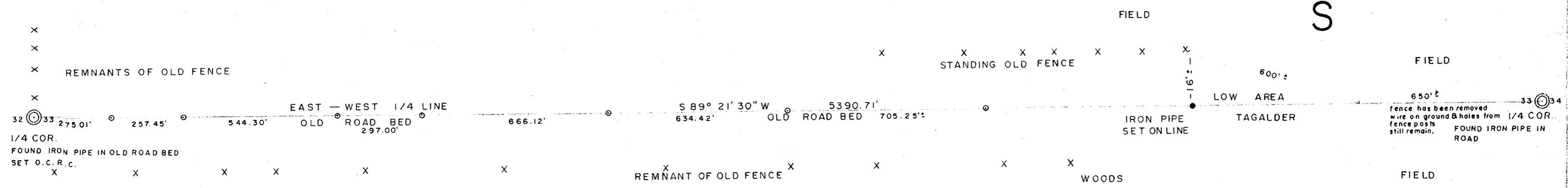


RECEIVED & FILED # **A551**
 Office
 Date **JUN 4 1990**
 By *[Signature]*
 OCS Area #

EAST - WEST 1/4 LINE, SEC. 33, T. 36 N., R. 8 E., ONEIDA COUNTY, WI.



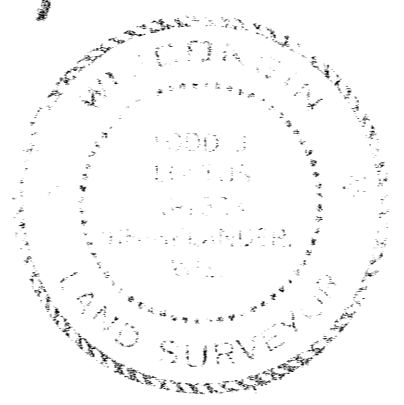
NORTH IS REFERENCED TO THE
 E - W 1/4 LINE OF SEC. 33 ASSUMED
 TO BEAR S 89° 21' 30" W.



Note: It appears the fences remaining North and South of the old road bed were right of way fences.

It is the intent of this map to show the relationship between the 1/4 corners (assumed to be set to the East approximately 1/4 mile which is stated out at intervals.

I, Todd Loftus, Registered Land Surveyor, hereby certify that I have surveyed the east-west line by the directions of iron pipes, that the above map is a true & correct representation of the lands surveyed to the best of my knowledge and belief.

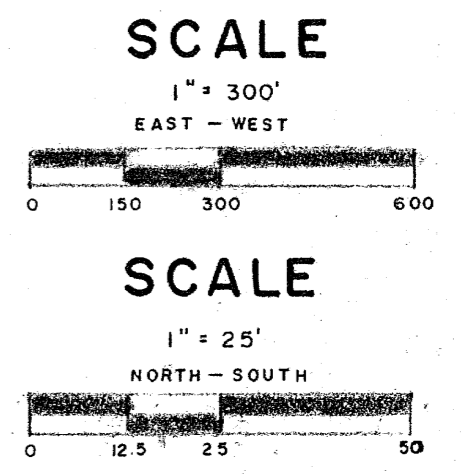


Todd Loftus
 11/21/1989

REVISED 11/23/1989 TO CLARIFY THAT THE SHOWN FENCE LOCATIONS ARE NOT TO SCALE.

REVISED 4/1/1990 TO SHOW IRON PIPES SET ON THE ENTIRE E-W 1/4 LINE.

IRON PIPE SET ○



A551

A551

A551