

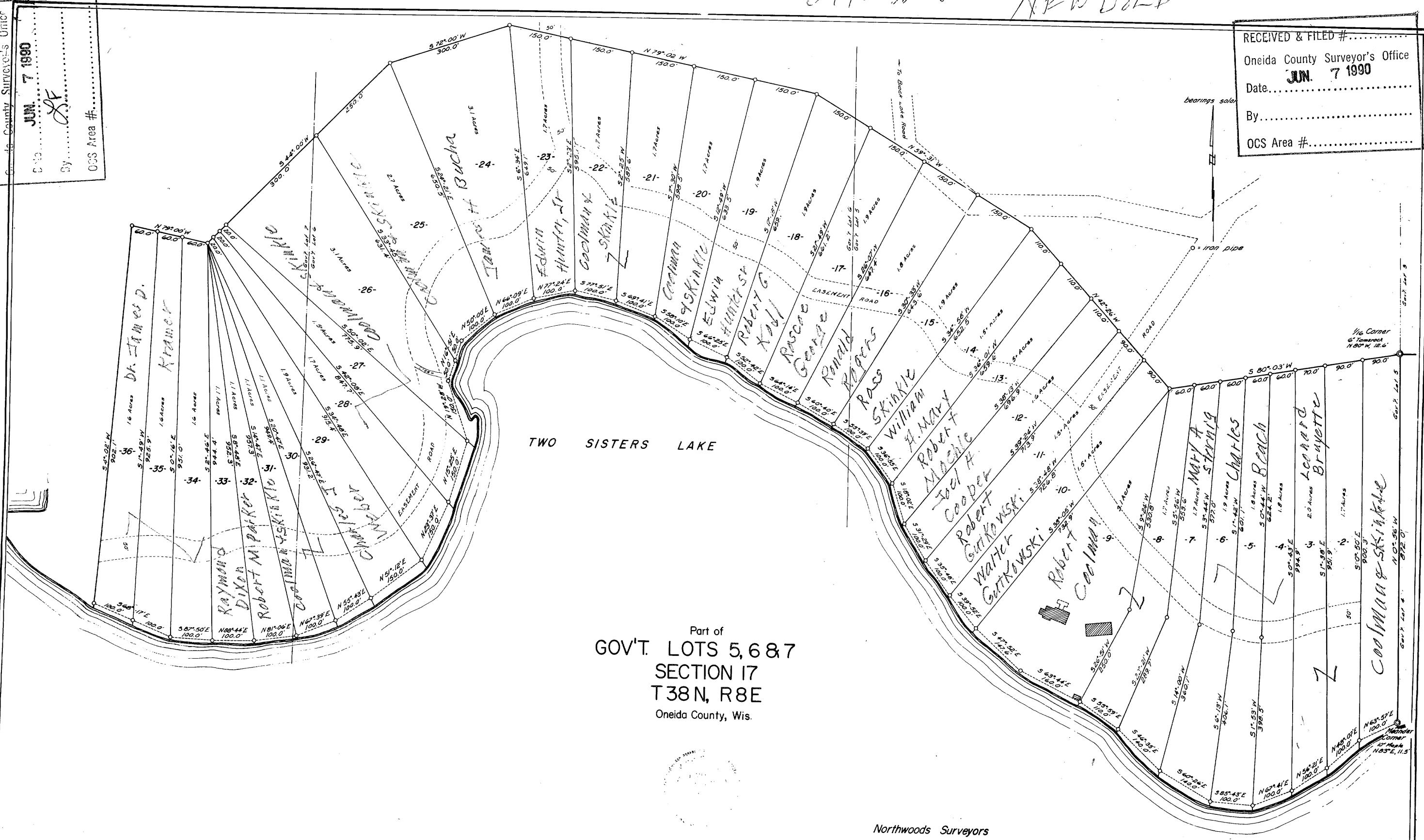
517-38-8

NEW BOLD

RECEIVED & FILED # **A553**
 Oneida County Surveyor's Office
 Date **JUN. 7 1990**
 By *[Signature]*
 OCS Area #

RECEIVED & FILED #.....
 Oneida County Surveyor's Office
 Date **JUN. 7 1990**
 By.....
 OCS Area #.....

A553



Part of
GOV'T. LOTS 5, 6 & 7
SECTION 17
T38N, R8E
 Oneida County, Wis.

April, 1966

Northwoods Surveyors

Lana Surveyor

J. Fisher

A553