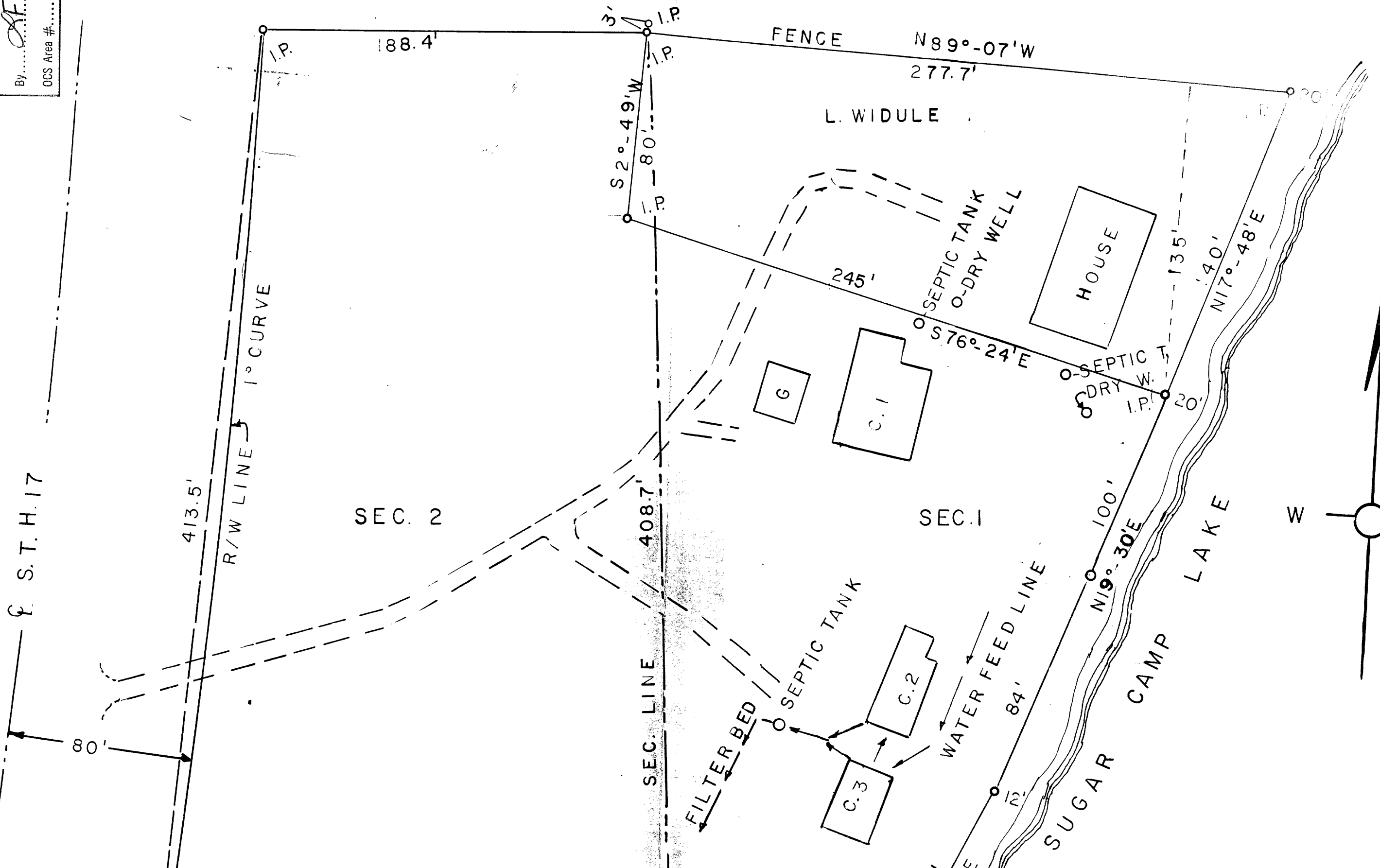


A 561

RECEIVED & FILED #.....
 Oneida County Surveyor's Office
 Date **AUG. 27 1980**
 By *AF*
 OCS Area #.....

SURVEY IN SEC 1 & SEC 2, T 38 N, R 9 E.
 ONEIDA COUNTY

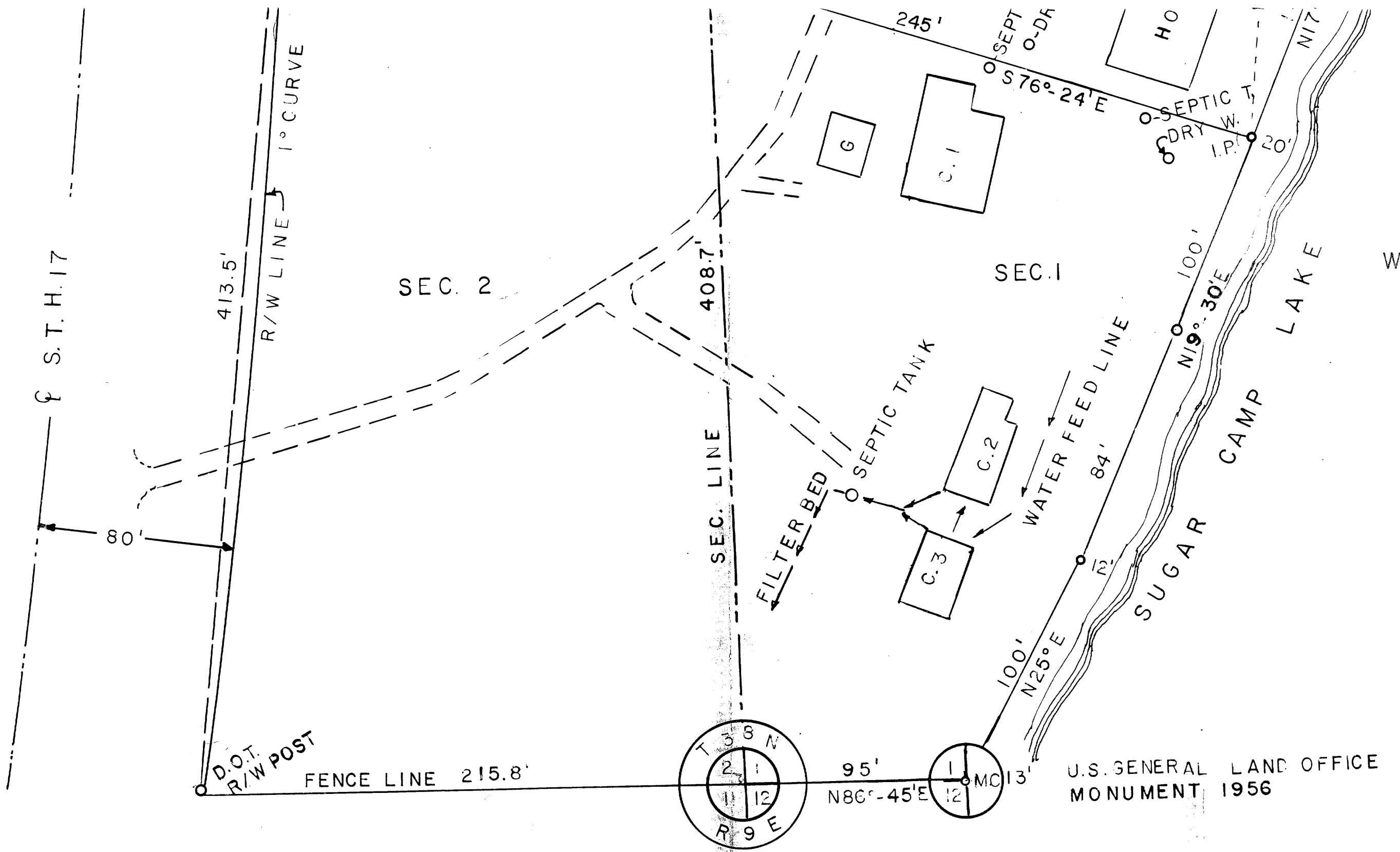
G.L.4
 G.L.3



561

561

A 561



BEARINGS ARE MAG.
SCALE 1" = 40 FT.

SURVEYED BY A.M.HESS
MARCH 1969

U.S. GENERAL LAND OFFICE
MONUMENT 1956

A561

A561