

A577

A577

RECEIVED & FILED #.....
Onida County Surveyor's Office
Date: AUG. 27 1991
By: <i>[Signature]</i>
OCS Area #.....

RECEIVED
SEP 19 1990
Dept. of Regulation & Licensing

IC SURVEY MAP
(PRELIMINARY)

OF HARRISON MC NOWN
RSHAW WISCONSIN

of Lot 9 less Crosby, Gov't
& 2 of Crosby Sub-division, all
N. R 7 E; also Gov't Lots 5 & 6
N, R 7 E; Oneida County, Wisc.

1" = 200'

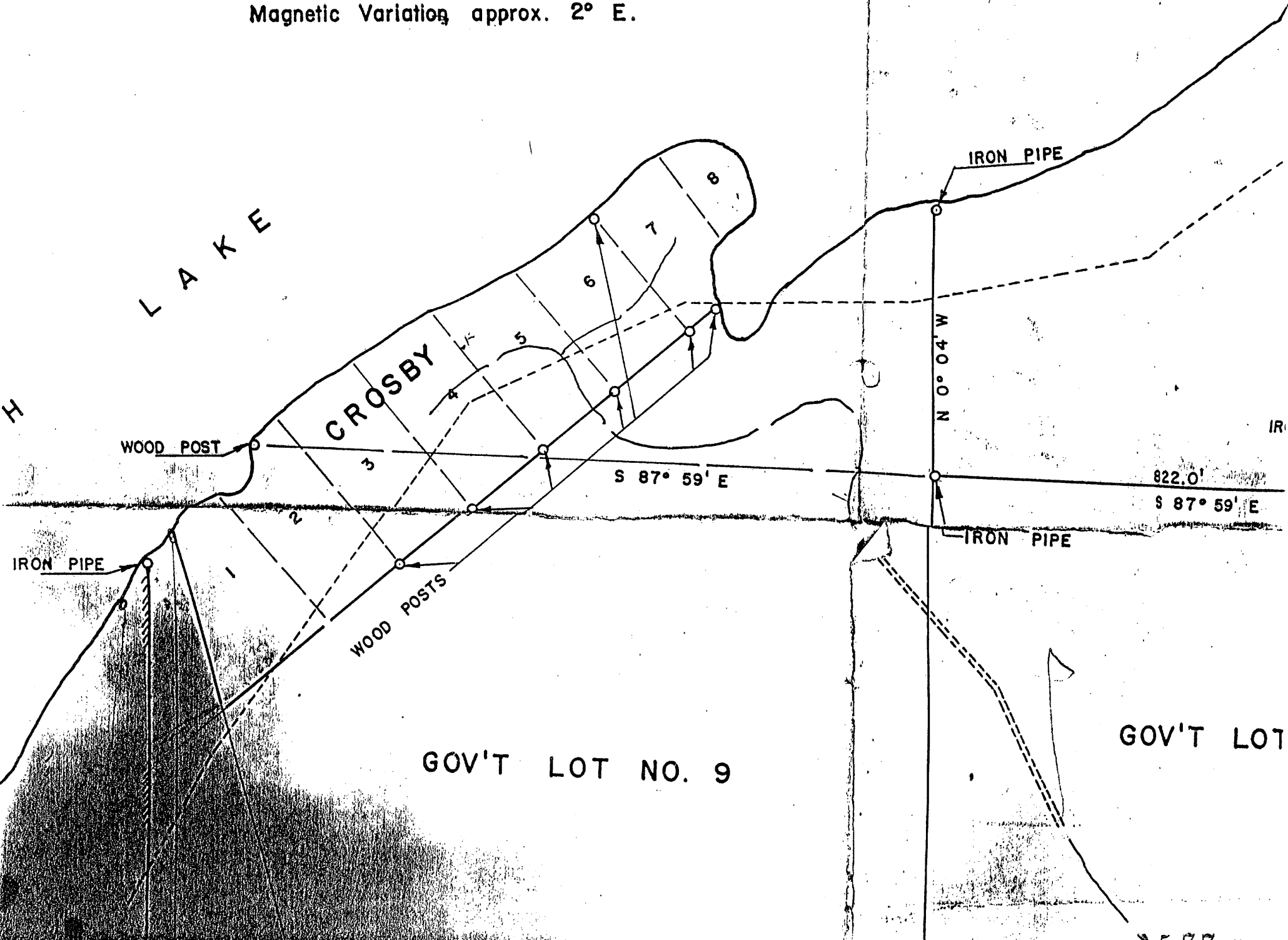
Survey and Drawing, Dec., 1950.

W. L. Frederick
W. L. FREDERICK

Magnetic Variation approx. 2° E.



BIRCH



A577