

Inman • Foltz and Associates, Inc.
 architects engineers surveyors
 8812 highway 51 north
 Minocqua, Wisconsin 54448 (715) 358-9485

RECEIVED & FILED #.....
 Oneida County Surveyor's Office
 Date **MAR. 31 1992**
 By: *[Signature]*
 CDS #.....

NW 1/4 of the SW 1/4

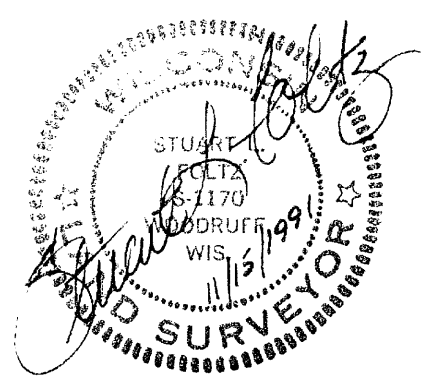
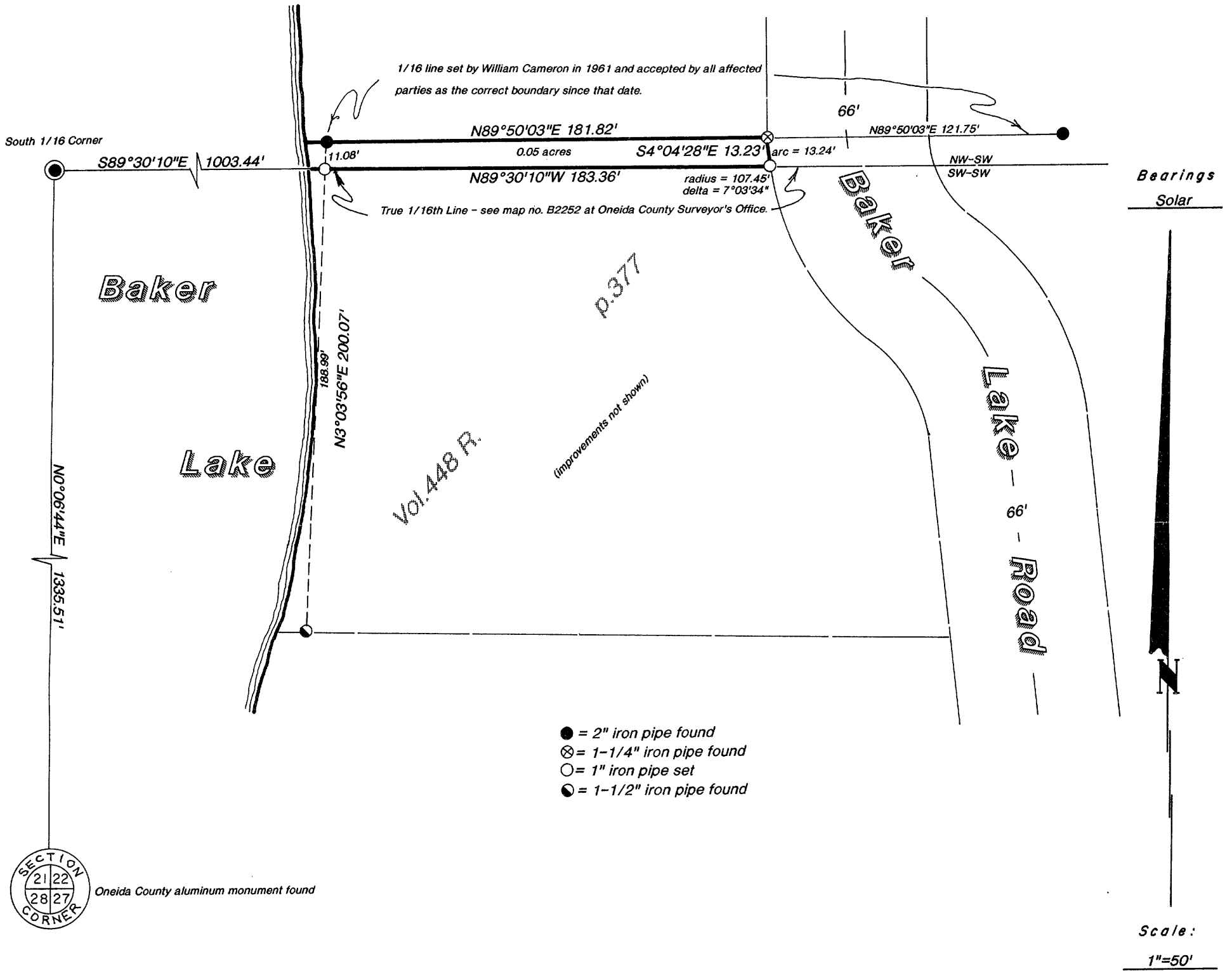
Section 22

Township 39 North

Range 6 East

County Oneida

State of Wisconsin



I hereby certify that this survey and the above map were made in accordance with acceptable professional standards and that the information contained thereon is, to the best of my knowledge, information and belief, a true and accurate representation thereof.

Any legal descriptions conforming to this survey have been provided on separate sheets.

The above survey was made by order of Gene Vollmer.