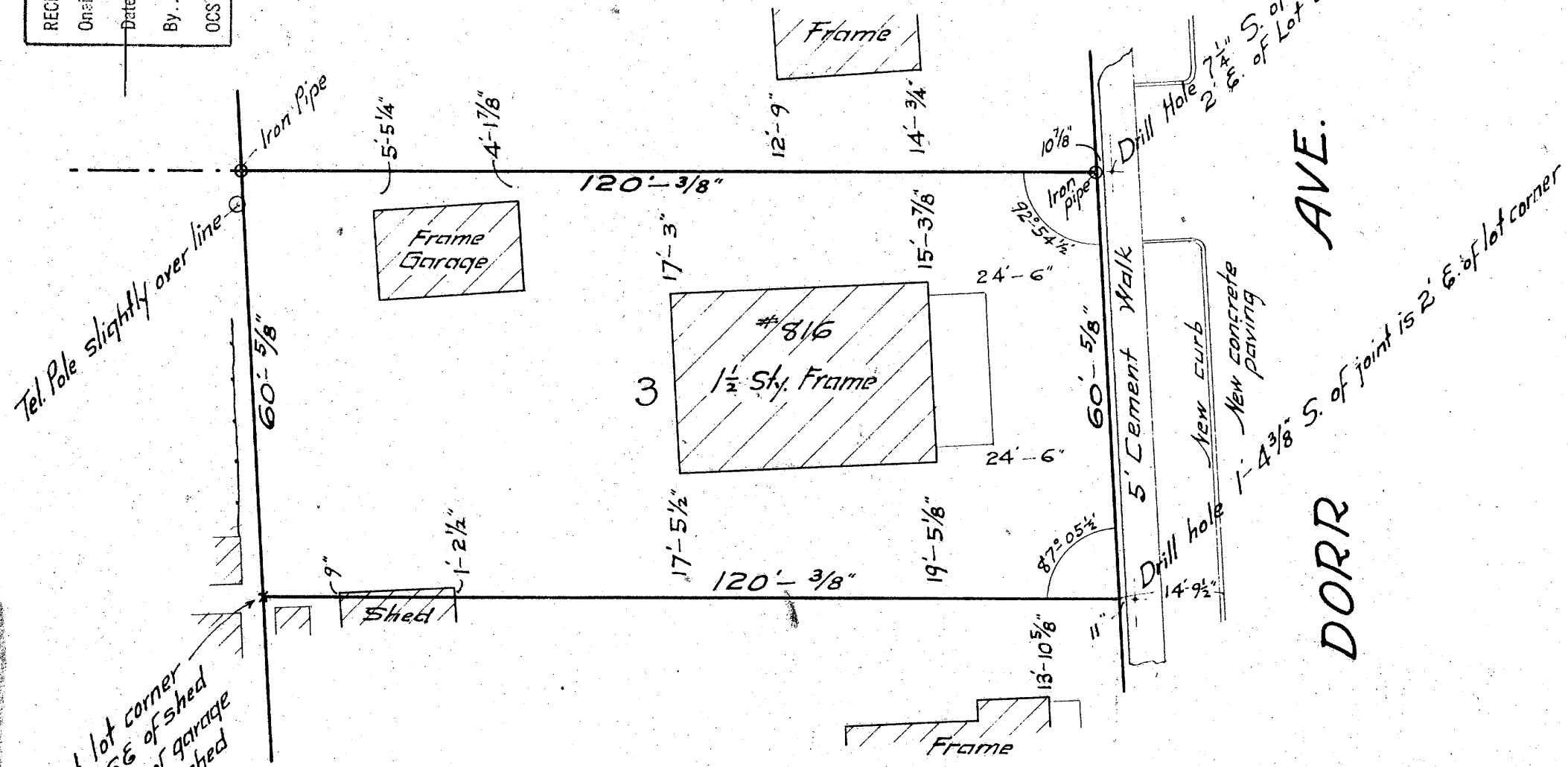


A612

RECEIVED & FILED #.....
 Oneida County Surveyor's Office
 MAY 13 1932
 Date: *HP*
 By:
 OCS Area #.....

Plat of Survey
 of
 Lot 3 in Block 6 of Keenan's Second Addition
 to Rhinelander, Wis.
 Scale 1 inch = 20 ft.



Stake at lot corner
 is 3'-5/8" SE of shed
 3'-9/4" NE of garage
 2'-1/4" NW of shed

RHINELANDER, WIS.
 OFFICE OF COUNTY SURVEYOR
 ONEIDA COUNTY

Placed on file this 1ST day of
October A. D. 1931
Harry C. Hall
 County Surveyor.

Surveyor's Certificate

I, Harry C. Hall do hereby certify that on September 21st + 22nd 1931, I surveyed the above described property for W. D. Wright and that the plat hereon drawn correctly represents said survey.

Rhinelander, Wis.
 Sept. 23rd 1931

Harry C. Hall
 County Surveyor, Oneida County

A612

A612

A612

Misc # 1153